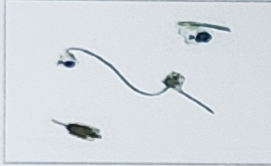


Problem : No sound /Discontinuity of sound/Reduced sound level

Defect : Receiver

How to correct?

1. Check for wire continuity of the receiver.
2. If problem persist change the receiver.

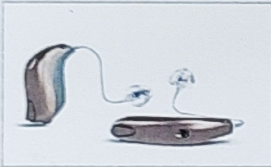


Problem : No sound/Discontinuity of sound/Not able to control different programs.

Defect : Control switches

Remedy

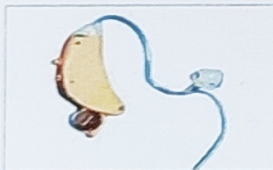
Replace the worn out/ defective switches.



Problem : Battery problem

How to correct?

1. Change the drained out battery and keep the battery compartment clean.
2. Check for clear output if not then contact nearest service centre for necessary servicing/repairs



TIPS FOR REPAIR OF MINOR PROBLEMS

Examine your hearing aids for wax or debris



Use your wax pick or cleaning brush or multi tool to remove the accumulated wax from the openings



Check whether the wax filter is discoloured or dirty, change the filter using the tool provided



Clean all dirt collected in the sound outlet by using the brush



Keep the hearing aid in Dry Kit after removing battery from the battery compartment.

Wipe RITE with clean dry cloth or tissue. Keep RITE away from smoke, chemical, moisture and high temperature



Let the hearing aid dry overnight. Then reassemble the accessories of the hearing aid in the morning for use.

GUIDELINES FOR REPAIR OF

RITE HEARING AIDS



Receiver-In-The Ear (RITE) sometimes called Receiver-In-The-Canal (RIC) hearing instruments sits behind the ear. Unlike traditional Behind-The-Ear (BTE) devices, the receiver (Ear phone) piece goes inside the ear. This allows the devices to be smaller than BTE hearing aids.

GENERAL FEATURES

- Available in Mini or Micro package.
- All components except receiver are enclosed in a case, worn behind the ear.
- Sound is directed into the ear canal through receiver unit.
- The receiver can be fit with standard domes or custom ear moulds.
- Virtually unnoticeable when worn.

SPECIAL FEATURES

- Wireless connectivity between RITE and MOBILE for its control

For further information please contact:



**Hearing Aid Repair Section
Dept. of Electronics**

Phone: 0821-2502201 Email: aiishrepair@gmail.com
aiishrepair@aiishmysore.in

ALL INDIA INSTITUTE OF SPEECH AND HEARING

Naimisham Campus, Manasagangothri, Mysuru - 06

Ph: 0821 2502100, 2502000 Toll free : 18000 4255 218 Fax : 0821 2510515

E-mail : director@aiishmysore.in Website : www.aiishmysore.in

Working hours: 9 a.m to 5.30 p.m-Monday to Friday

(Except on Central Govt Holidays)

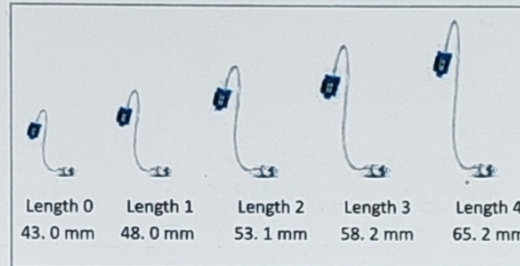
PARTS OF RITE

1. Body case
2. Microphone protection
3. Digital signal processor
4. Battery contacts
5. HPF80 coating
6. Receiver
7. Wireless antenna
8. Microphone filters



All these options help ensure sufficient amplification and fitting flexibility for the patients.

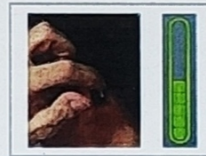
- ✓ Four different power levels ensure enough amplification.



CONTROL YOUR RITE

Volume control

Check for variation of volume by operating volume control switch



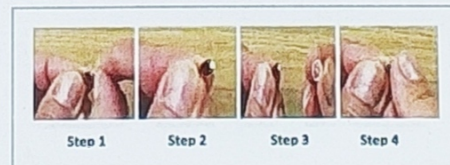
Wax Collection

Ensure your ears are clear and clean before placing the receiver in the ear canal



Replacing of Domes

Hold the receiver while changing the dome. Follow the simple steps to change Dome as shown below



REPAIR OF MAJOR PROBLEMS

Problem : WAX Collection

Defect : Low volume heard from Hearing aid

How to correct?

1. Clear blocks in the Dome using cleaning tool
2. Replace wax guard
3. Follow the steps as shown below



Problem : Humidity/Moisture in Hearing aid

Defect : Noisy/Switches ON-OFF /Switch OFF

Steps to follow

1. Remove battery from battery compartment.
2. Remove dome gently and clean it with dry cloth
3. Expose the hearing aid to incandescent bulb of 60 watts power keeping at 1 foot distance for 15 minutes.
4. Place the hearing aid in DRY KIT BOX provided

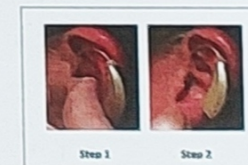


Problem : Continuity of receiver

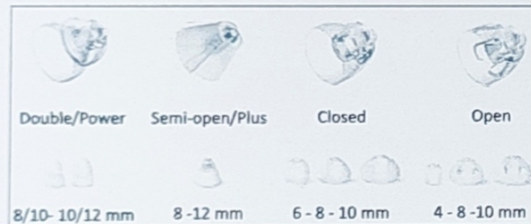
Defect : No sound from hearing aid

How to correct?

Use the pull string provided to remove the receiver from ear canal. Follow the steps as shown below



KNOW YOUR RITE



Four different power levels ensure enough amplification.

- ✓ Receiver Power models

