


**Brand new Moodle theme released!** Based on Boost and packed with exciting new features.

View Demo (<https://elearning.3rdwavemedia.com/themes/moodle-theme-maker/>)

 (<https://elearning.3rdwavemedia.com/>)

## How to make useful Moodle course layout/component templates available to your teachers in Moodle's text editor

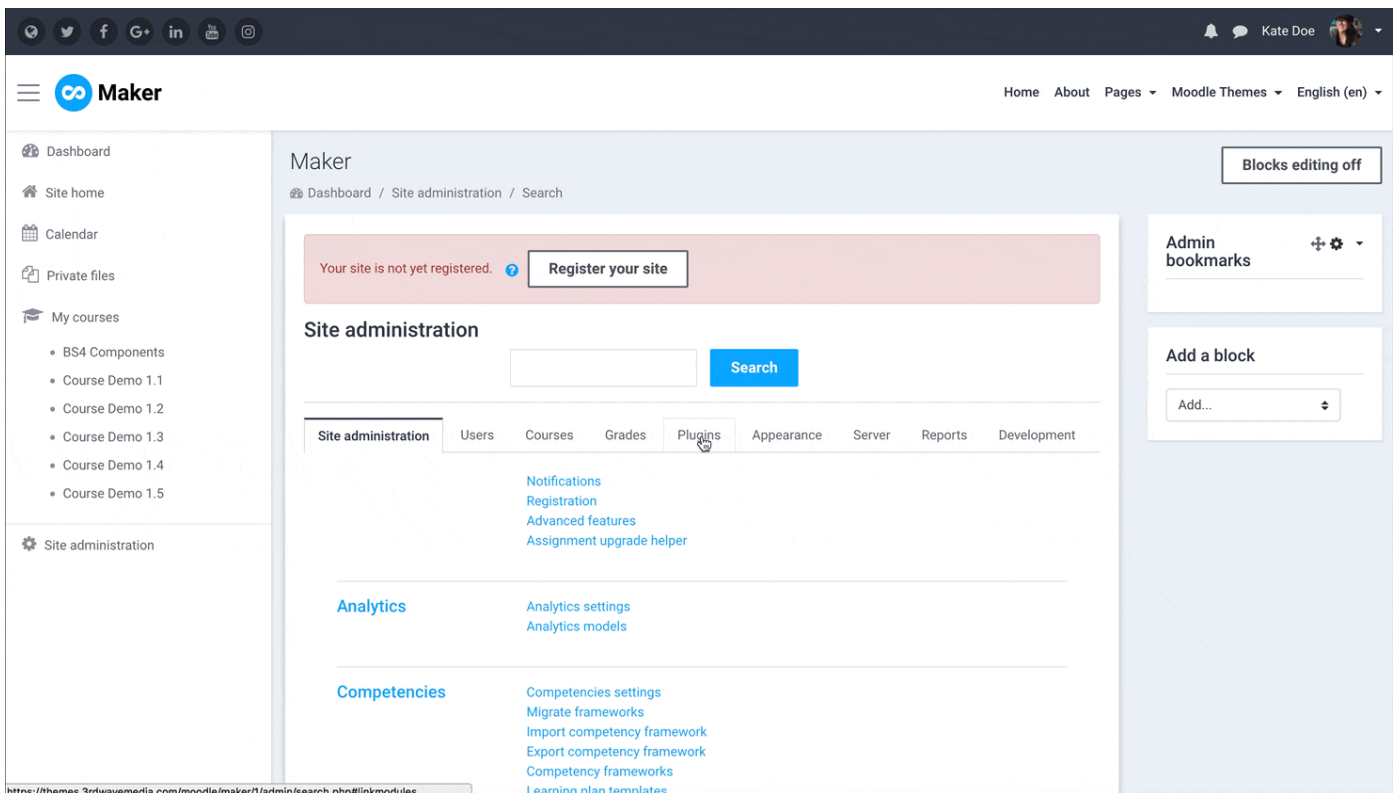
Posted on April 23rd, 2018

Want to provide predefined and preformatted course layout/component templates such as **tables, cards, badges and buttons** for your teachers to easily drop into courses they are creating? We've found the perfect solution for you – you can install a Moodle plugin called “Templates” ([https://moodle.org/plugins/atto\\_templates](https://moodle.org/plugins/atto_templates)) to achieve that. This could be a great way to **empower your teachers to create engaging courses with beautiful layouts and useful components**. You can even use this to make fully-fledged course templates for teachers to choose from.

In this tutorial we will walk you through the whole process of making a template available for your teachers to use in Moodle's text editor.

### Step 1 – Install Plugin

Download the “Templates” plugin ([https://moodle.org/plugins/atto\\_templates](https://moodle.org/plugins/atto_templates)) from Moodle's plugins directory and upload the downloaded zip file to your Moodle's plugins page: Site administration > Plugins > Install plugins



The screenshot displays the Moodle 'Maker' theme's site administration interface. The top navigation bar includes 'Home', 'About', 'Pages', 'Moodle Themes', and 'English (en)'. The left sidebar contains a 'Maker' logo and a menu with items like 'Dashboard', 'Site home', 'Calendar', 'Private files', 'My courses', and 'Site administration'. The main content area is titled 'Maker' and shows a 'Site administration' section with a search bar and a list of modules including Notifications, Analytics, and Competencies. The 'Plugins' module is highlighted, and a 'Register your site' button is visible at the top.

### Step 2 – Create Templates

Go to the plugins' settings page to add your templates: Site administration > Plugins > Text editors > Atto HTML editor > Template settings

By default, you can add 3 templates but you can add as many templates as you want by increasing the number in the “**Template count**” field.

To define a template, you need to enter the **template name** (plain text) and **content** (raw HTML code). For this tutorial, we created three templates called “tables”, “cards” and “buttons”. **The HTML code used in the templates was taken from the built-in Bootstrap components in our Moodle theme Maker (<https://elearning.3rdwavemedia.com/blog/moodle-theme-maker-useful-bootstrap-4-components/3139/>)** (Maker (<https://elearning.3rdwavemedia.com/themes/moodle-theme-maker/>) is the theme used for the demo site)

🔔 If you are using our premium Moodle themes (<https://elearning.3rdwavemedia.com/themes/>), there are lots of built-in Bootstrap components you can utilise to create your templates. You might find the tutorials below useful:

**Maker Theme:** Tutorial (<https://elearning.3rdwavemedia.com/blog/moodle-theme-maker-useful-bootstrap-4-components/3139/>)

**Labland/Impression/Herald/Gourmet/Element Theme:** Tutorial 1 (<https://elearning.3rdwavemedia.com/blog/add-useful-bootstrap-components-to-moodle-theme-gourmet/1939/>) | Tutorial 2 (<https://elearning.3rdwavemedia.com/blog/advanced-bootstrap-components-for-moodle-theme-impression/2459/>)

### Template settings

Template count  Default: 3  
atto\_templates | templatecount

The number of templates you wish to have.

### Settings for Template: Tables

The key that identifies template 1  Default: Empty  
atto\_templates | templatekey\_1

The key should be one word and only contain numbers and letters, underscores, hyphens and dots.

The body of template 1 
atto\_templates | template\_1

Default: Empty

Put the template here

### Settings for Template: Cards

The key that identifies template 2  Default: Empty  
atto\_templates | templatekey\_2

The key should be one word and only contain numbers and letters, underscores, hyphens and dots.

The body of template 2 
atto\_templates | template\_2

Default: Empty

Put the template here

### Settings for Template: Buttons

The key that identifies template 3  Default: Empty  
atto\_templates | templatekey\_3

The key should be one word and only contain numbers and letters, underscores, hyphens and dots.

The body of template 3 
atto\_templates | template\_3

Default: Empty

Put the template here

[Save changes](#)

**Admin bookmarks**

---

[Bookmark this page](#)

## Step 3 – Add “Templates” to the Moodle text editor’s toolbar

After creating your templates, you also need to add the “templates” utility to the Moodle text editor’s toolbar so your users can access the templates.

Go to the text editor’s settings page to configure: [Site administration](#)>[Plugins](#)>[Text editors](#)>[Atto HTML editor](#)

Changes in table above are saved automatically.

Toolbar config  
editor\_atto | toolbar

```
collapse = collapse
style1 = title, bold, italic
list = unorderedlist, orderedlist, fullscreen
links = link
files = image, media, managefiles
style2 = underline, strike, subscript, superscript
align = align
indent = indent
insert = equation, charmap, table, clear
```

Default:

```
collapse = collapse
style1 = title, bold, italic
list = unorderedlist, orderedlist
links = link
files = image, media, managefiles
style2 = underline, strike, subscript, superscript
align = align
indent = indent
insert = equation, charmap, table, clear
undo = undo
accessibility = accessibilitychecker, accessibilityhelper
other = html
```

The list of plugins and the order they are displayed can be configured here. The configuration consists of groups (one per line) followed by the ordered list of plugins for that group. The group is separated from the plugins with an equals sign and the plugins are separated with commas. The group names must be unique and should indicate what the buttons have in common. Button and group names should not be repeated and may only contain alphanumeric

Now your teachers should be able to access all of the available templates in the text editor by clicking the “templates” icon in the text editor:

Course Demo 1.1 (Topics Format)

Dashboard / My courses / Course Demo 1.1 / General / Adding a new Label

Adding a new Label

General

Label text

Templates

Common module settings

Restrict access

Activity completion

Tags

Add a block

Add...

**Tip:** When working with templates it's very helpful to make the text editor go fullscreen so there is plenty of screen space for previewing and editing the inserted templates.

[Learn more \(https://elearning.3rdwavemedia.com/blog/how-to-make-your-moodles-text-editor-to-go-fullscreen/3487/\)](https://elearning.3rdwavemedia.com/blog/how-to-make-your-moodles-text-editor-to-go-fullscreen/3487/)

Below are some screen captures to show you how to insert the templates to your desired course:

Add a label to a course so you can add content to the course:

Course Demo 1.1 (Topics Format)

Dashboard / My courses / Course Demo 1.1

Announcements

Topic 1

Assignment Demo

Quiz Demo

Chat Demo

Choice Demo

Add a block

Add...

Insert "Tables":

Course Demo 1.1 (Topics Format)

Dashboard / My courses / Course Demo 1.1 / General / Adding a new Label

### Adding a new Label

Expand all

**General**

Label text

- Common module settings
- Restrict access
- Activity completion

Add a block

Add...

### Insert "Cards:


#	First	Last	Handle
1	Mark	Otto	@mdo
2	Jacob	Thornton	@fat
3	Larry	the Bird	@twitter

#	First Name	Last Name	Username
1	Mark	Otto	@mdo
2	Jacob	Thornton	@fat
3	Larry	the Bird	@twitter

### Insert "Buttons"

Rich text editor toolbar with various icons for text formatting, alignment, and media insertion.


#	First Name	Last Name	Username
1	Mark	Otto	@mdo
2	Jacob	Thornton	@fat
3	Larry	the Bird	@twitter



**Card title**

This is a longer card with supporting text below as a natural lead-in to additional content. This content is a little bit longer.


Last updated 3 mins ago



**Card title**

This card has supporting text below as a natural lead-in to additional content.

Last updated 3 mins ago



**Card title**

This is a wider card with supporting text below as a natural lead-in to additional content. This card has even longer content than the first to show that equal height action.

Last updated 3 mins ago

## You May Also Like

- ▶ [How to make your Moodle's text editor go fullscreen \(https://elearning.3rdwavemedia.com/blog/how-to-make-your-moodles-text-editor-to-go-fullscreen/3487/\)](https://elearning.3rdwavemedia.com/blog/how-to-make-your-moodles-text-editor-to-go-fullscreen/3487/)
- ▶ [Moodle Theme Maker – Useful Bootstrap 4 Components \(https://elearning.3rdwavemedia.com/blog/moodle-theme-maker-useful-bootstrap-4-components/3139/\)](https://elearning.3rdwavemedia.com/blog/moodle-theme-maker-useful-bootstrap-4-components/3139/)
- ▶ [Add Useful Bootstrap Components to Moodle Theme Gourmet/Herald/Impression/Labland/Element \(https://elearning.3rdwavemedia.com/blog/add-useful-bootstrap-components-to-moodle-theme-gourmet/1939/\)](https://elearning.3rdwavemedia.com/blog/add-useful-bootstrap-components-to-moodle-theme-gourmet/1939/)
- ▶ [Advanced Bootstrap Components for Moodle Theme Impression/Labland/Herald/Gourmet/Element \(https://elearning.3rdwavemedia.com/blog/advanced-bootstrap-components-for-moodle-theme-impression/2459/\)](https://elearning.3rdwavemedia.com/blog/advanced-bootstrap-components-for-moodle-theme-impression/2459/)

## Want to master Moodle?

### Moodle 3.0x Masterclass: Complete Educator's Guide to Moodle

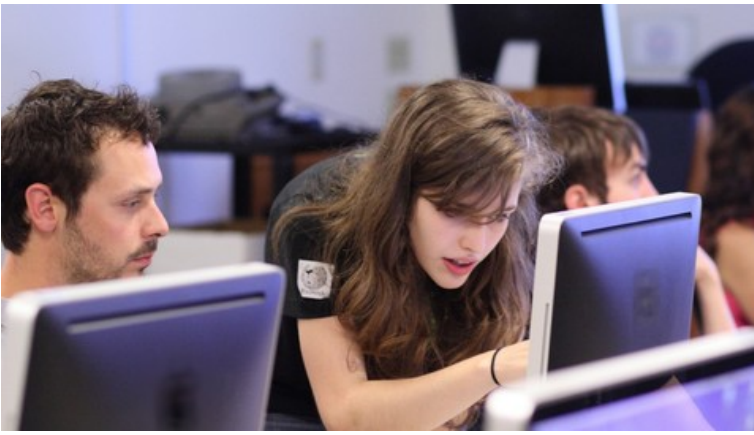
([https://click.linksynergy.com/link?id=yEvJ0\\*bt14&offerid=323057.622824&type=2&murl=https%3A%2F%2Fwww.udemy.com%2Fmoodle-tutorial%2F](https://click.linksynergy.com/link?id=yEvJ0*bt14&offerid=323057.622824&type=2&murl=https%3A%2F%2Fwww.udemy.com%2Fmoodle-tutorial%2F))


([https://click.linksynergy.com/link?id=yEvJ0\\*bt14&offerid=323057.622824&type=2&murl=https%3A%2F%2Fwww.udemy.com%2Fmoodle-tutorial%2F](https://click.linksynergy.com/link?id=yEvJ0*bt14&offerid=323057.622824&type=2&murl=https%3A%2F%2Fwww.udemy.com%2Fmoodle-tutorial%2F))



Moodle Tutorial for Educators - Learn Moodle to create WORLD CLASS online courses. Leverage Moodle 3 like a BOSS!

★★★★★ 1500+ students enrolled




([https://click.linksynergy.com/link?id=yEvJ0\\*btrl4&offerid=323057.622824&type=2&murl=https%3A%2F%2Fwww.udemy.com%2Fmoodle-tutorial%2F](https://click.linksynergy.com/link?id=yEvJ0*btrl4&offerid=323057.622824&type=2&murl=https%3A%2F%2Fwww.udemy.com%2Fmoodle-tutorial%2F))  




([https://click.linksynergy.com/link?id=yEvJ0\\*btrl4&offerid=323057.622824&type=2&murl=https%3A%2F%2Fwww.udemy.com%2Fmoodle-tutorial%2F](https://click.linksynergy.com/link?id=yEvJ0*btrl4&offerid=323057.622824&type=2&murl=https%3A%2F%2Fwww.udemy.com%2Fmoodle-tutorial%2F))

## Are you a Moodle admin?


### Moodle Administration Tutorial: Beginner, Intermediate Guide

([https://click.linksynergy.com/link?id=yEvJ0\\*btrl4&offerid=323057.692610&type=2&murl=https%3A%2F%2Fwww.udemy.com%2Fmoodle-administration-tutorial%2F](https://click.linksynergy.com/link?id=yEvJ0*btrl4&offerid=323057.692610&type=2&murl=https%3A%2F%2Fwww.udemy.com%2Fmoodle-administration-tutorial%2F))  


Learn World Class Moodle LMS Admin, Configure, Theme, Manage Courses, Users, Permissions, Roles, Security, Plugins...

★★★★★ 2000+ students enrolled



([https://click.linksynergy.com/link?id=yEvJ0\\*btrl4&offerid=323057.692610&type=2&murl=https%3A%2F%2Fwww.udemy.com%2Fmoodle-administration-tutorial%2F](https://click.linksynergy.com/link?id=yEvJ0*btrl4&offerid=323057.692610&type=2&murl=https%3A%2F%2Fwww.udemy.com%2Fmoodle-administration-tutorial%2F))  




([https://click.linksynergy.com/link?id=yEvJ0\\*btrl4&offerid=323057.692610&type=2&murl=https%3A%2F%2Fwww.udemy.com%2Fmoodle-administration-tutorial%2F](https://click.linksynergy.com/link?id=yEvJ0*btrl4&offerid=323057.692610&type=2&murl=https%3A%2F%2Fwww.udemy.com%2Fmoodle-administration-tutorial%2F))



## Latest Moodle Theme



(<http://elearning.3rdwavemedia.com/themes/moodle-theme-maker/>)

## Popular Moodle Courses

**Learn to Host Moodle with Linux** ([https://click.linksynergy.com/link?id=yEvJ0\\*btrl4&offerid=323057.387856&type=2&murl=https%3A%2F%2Fwww.udemy.com%2Fmoodle-hosting-made-easy%2F](https://click.linksynergy.com/link?id=yEvJ0*btrl4&offerid=323057.387856&type=2&murl=https%3A%2F%2Fwww.udemy.com%2Fmoodle-hosting-made-easy%2F))



([https://click.linksynergy.com/link?](https://click.linksynergy.com/link?id=yEvJ0*btrl4&offerid=323057.387856&type=2&murl=https%3A%2F%2Fwww.udemy.com%2Fmoodle-hosting-made-easy%2F)

[id=yEvJ0\\*btrl4&offerid=323057.387856&type=2&murl=https%3A%2F%2Fwww.udemy.com%2Fmoodle-hosting-made-easy%2F\)](https://click.linksynergy.com/link?id=yEvJ0*btrl4&offerid=323057.387856&type=2&murl=https%3A%2F%2Fwww.udemy.com%2Fmoodle-hosting-made-easy%2F)

**Moodle Tutorial: EXPERT LEVEL Educator Course** ([https://click.linksynergy.com/link?](https://click.linksynergy.com/link?id=yEvJ0*btrl4&offerid=323057.942512&type=2&murl=https%3A%2F%2Fwww.udemy.com%2Fmoodle-tutorial-advanced%2F)

[id=yEvJ0\\*btrl4&offerid=323057.942512&type=2&murl=https%3A%2F%2Fwww.udemy.com%2Fmoodle-tutorial-advanced%2F\)](https://click.linksynergy.com/link?id=yEvJ0*btrl4&offerid=323057.942512&type=2&murl=https%3A%2F%2Fwww.udemy.com%2Fmoodle-tutorial-advanced%2F)

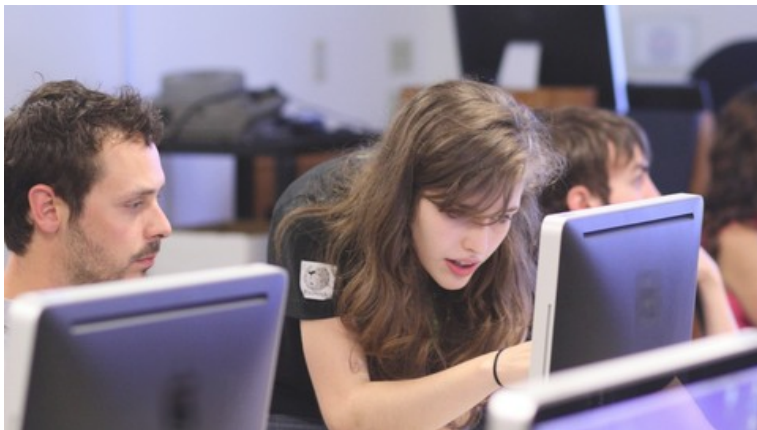


([https://click.linksynergy.com/link?](https://click.linksynergy.com/link?id=yEvJ0*btrl4&offerid=323057.942512&type=2&murl=https%3A%2F%2Fwww.udemy.com%2Fmoodle-tutorial-advanced%2F)

[id=yEvJ0\\*btrl4&offerid=323057.942512&type=2&murl=https%3A%2F%2Fwww.udemy.com%2Fmoodle-tutorial-advanced%2F\)](https://click.linksynergy.com/link?id=yEvJ0*btrl4&offerid=323057.942512&type=2&murl=https%3A%2F%2Fwww.udemy.com%2Fmoodle-tutorial-advanced%2F)

**Moodle Masterclass: Complete Educator's Guide to Moodle** ([https://click.linksynergy.com/link?](https://click.linksynergy.com/link?id=yEvJ0*btrl4&offerid=323057.622824&type=2&murl=https%3A%2F%2Fwww.udemy.com%2Fmoodle-tutorial%2F)

[id=yEvJ0\\*btrl4&offerid=323057.622824&type=2&murl=https%3A%2F%2Fwww.udemy.com%2Fmoodle-tutorial%2F\)](https://click.linksynergy.com/link?id=yEvJ0*btrl4&offerid=323057.622824&type=2&murl=https%3A%2F%2Fwww.udemy.com%2Fmoodle-tutorial%2F)



([https://click.linksynergy.com/link?](https://click.linksynergy.com/link?id=yEvJ0*btrl4&offerid=323057.622824&type=2&murl=https%3A%2F%2Fwww.udemy.com%2Fmoodle-tutorial%2F)

[id=yEvJ0\\*btrl4&offerid=323057.622824&type=2&murl=https%3A%2F%2Fwww.udemy.com%2Fmoodle-tutorial%2F\)](https://click.linksynergy.com/link?id=yEvJ0*btrl4&offerid=323057.622824&type=2&murl=https%3A%2F%2Fwww.udemy.com%2Fmoodle-tutorial%2F)

**Moodle Administration Tutorial: Beginner, Intermediate Guide** ([https://click.linksynergy.com/link?](https://click.linksynergy.com/link?id=yEvJ0*btrl4&offerid=323057.692610&type=2&murl=https%3A%2F%2Fwww.udemy.com%2Fmoodle-administration-tutorial%2F)

[id=yEvJ0\\*btrl4&offerid=323057.692610&type=2&murl=https%3A%2F%2Fwww.udemy.com%2Fmoodle-administration-tutorial%2F\)](https://click.linksynergy.com/link?id=yEvJ0*btrl4&offerid=323057.692610&type=2&murl=https%3A%2F%2Fwww.udemy.com%2Fmoodle-administration-tutorial%2F)



([https://click.linksynergy.com/link?](https://click.linksynergy.com/link?id=yEvJ0*btrl4&offerid=323057.692610&type=2&murl=https%3A%2F%2Fwww.udemy.com%2Fmoodle-administration-tutorial%2F)

[id=yEvJ0\\*btrl4&offerid=323057.692610&type=2&murl=https%3A%2F%2Fwww.udemy.com%2Fmoodle-administration-tutorial%2F\)](https://click.linksynergy.com/link?id=yEvJ0*btrl4&offerid=323057.692610&type=2&murl=https%3A%2F%2Fwww.udemy.com%2Fmoodle-administration-tutorial%2F)



## ALSO ON ELEARNING THEMES

### How to change your Moodle theme's ...

a year ago · 3 comments

A website favicon is the icon displayed in the address bar of a browser as shown in ...

### Add Useful Bootstrap Components to ...

6 years ago · 1 comment

Want to improve your Moodle course's content design? We have ...

### How to translate default Moodle ...

5 years ago · 1 comment

In this tutorial, we will show you how to translate the default Moodle theme ...

### How to theme

6 years a

"Why are applied v Moodle t

0 Comments eLearning Themes Disqus' Privacy Policy Login ▾

Recommend Tweet Share Sort by Best ▾

Start the discussion...

LOG IN WITH

OR SIGN UP WITH DISQUS

Name

Be the first to comment.

Subscribe Add Disqus to your siteAdd DisqusAdd Do Not Sell My Data

Search blog...

## Latest Posts

How to add a contact form page to your Moodle site (<https://elearning.3rdwavemedia.com/blog/how-to-add-a-contact-form-page-to-your-moodle-site/4526/>)  
17 April, 2020

Moodle Theme Maker – New Header Dropdown Menu (<https://elearning.3rdwavemedia.com/blog/moodle-theme-maker-new-header-dropdown-menu/4505/>)  
16 April, 2020

Moodle Theme Maker – New Frontpage Data Box Widget Area (<https://elearning.3rdwavemedia.com/blog/moodle-theme-maker-new-frontpage-data-box-widget-area/4498/>)  
16 April, 2020

Moodle Theme Maker – What's New in Moodle 3.8+ (<https://elearning.3rdwavemedia.com/blog/moodle-theme-maker-whats-new-in-moodle-3-8/4400/>)  
18 November, 2019

Moodle Boost and Boost-based Themes – How To Display Side Blocks On The Left Instead of Right (<https://elearning.3rdwavemedia.com/blog/moodle-boost-and-boost-based-themes-how-to-display-side-blocks-on-the-left-instead-of-right/4393/>)  
26 October, 2019