

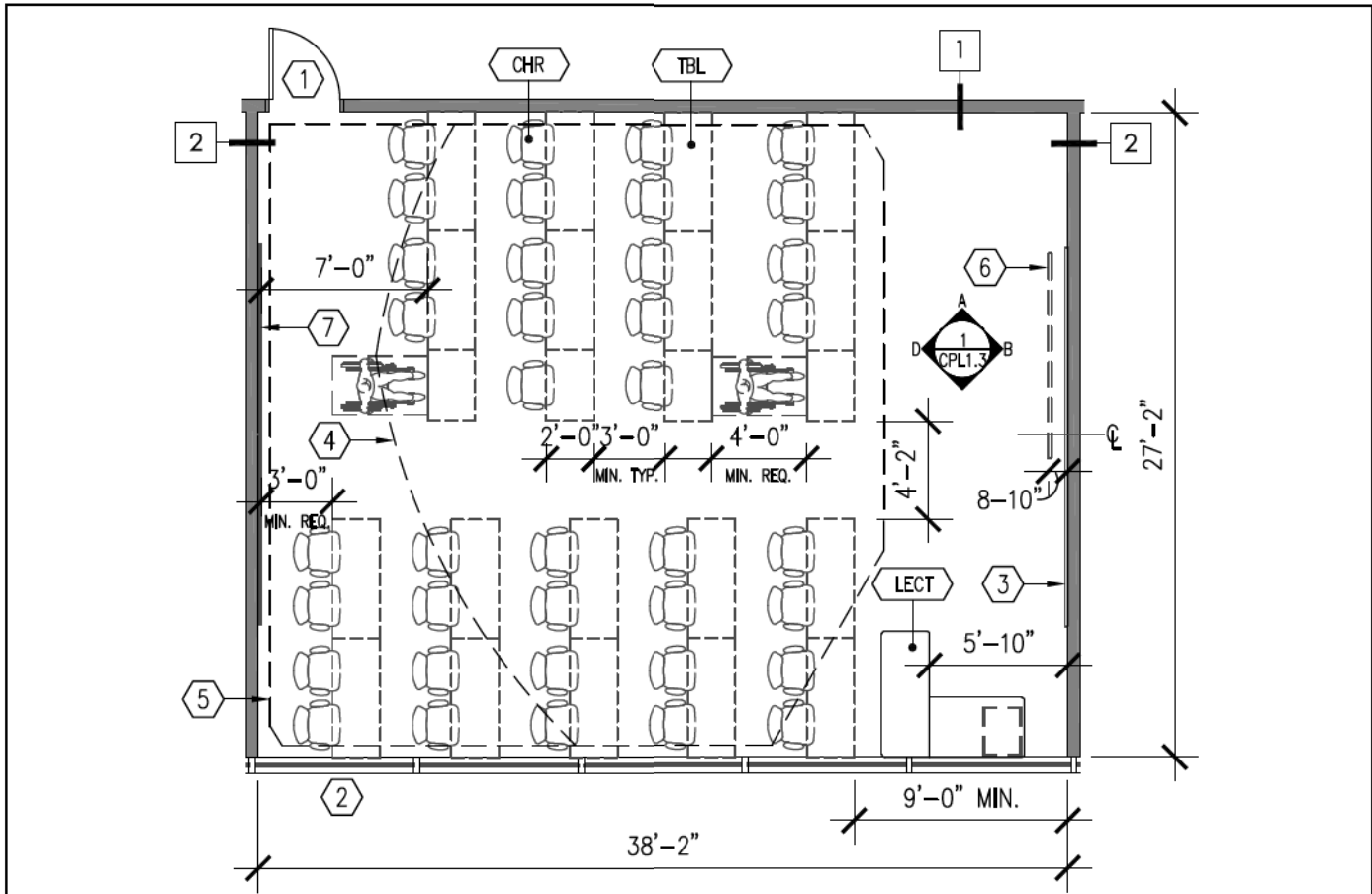


B: COMPUTER LABS

COMPUTER LAB 1A: STANDARD COMPUTER TABLES

COMPUTER LAB 1B: LAPTOP GARAGE TABLES

THIS PAGE LEFT BLANK INTENTIONALLY



SF	STUDENTS	SF/STUDENT
930	40	23

SCALE: 1/8" = 1'-0"

GENERAL NOTES:

- 1. ALL CLEARANCES (MOVABLE/FIXED FURNITURE, AISLE, WHEELCHAIR CLEARANCE) TO COMPLY WITH CURRENT ADA & CBC CODES.

KEYNOTES:

- ① DOOR WITH VISION PANEL
- ② WINDOW TO SUIT DESIGN. SHADES AT EXTERNAL WINDOWS.
- ③ WHITE BOARD - 16'-0" LENGTH
- ④ OPTIMAL VIEWING AREA
- ⑤ ACCEPTABLE VIEWING AREA
- ⑥ RECESSED PROJECTION SCREEN
- ⑦ TACKABLE SURFACE - 16'-0" LENGTH

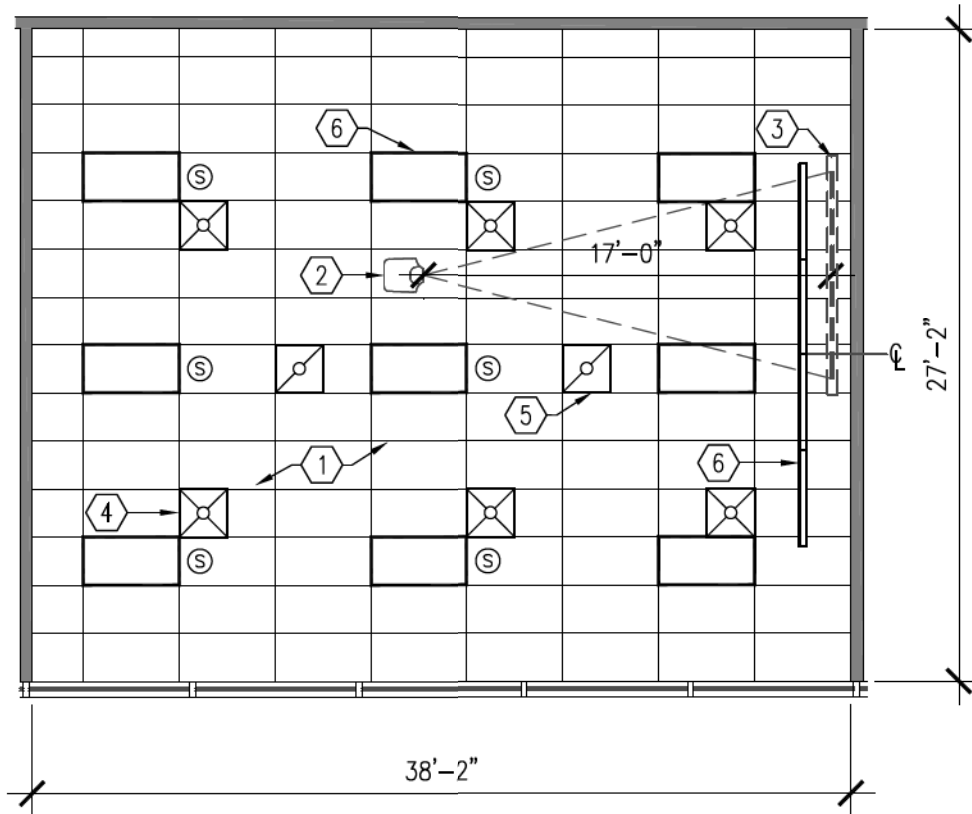
SYMBOLS:

- ABC FURNITURE ITEMS. REFER TO SCHEDULE FOR TYPE AND MODEL NUMBER
- X WALL TYPES - REFER TO SCHEDULE SHEET. REFERENCE WALL DESIGNS ARE SHOWN IN ADG-1 (ACOUSTIC DESIGN GUIDELINES)



LONG BEACH COMMUNITY COLLEGE DISTRICT
 FACILITY SERVICES DIVISION
DESIGN GUIDELINES BY ROOM TYPE
 DISTRICT STANDARDS
COMPUTER LAB 1A (COMPUTER TABLES) - FLOOR PLAN

DRAWING NO.
A - CPL1.1A
DATE: 18DEC2009



SCALE: 1/8" = 1'-0"

GENERAL NOTES:

1. SMOKE DETECTORS AND SPRINKLERS ARE TO BE LOCATED IN THE CENTER OF INDIVIDUAL CEILING PANELS

KEYNOTES:

- ① SUSPENDED ACOUSTIC LAY-IN CEILING
- ② AUDIO VISUAL PROJECTOR
- ③ RECESSED PROJECTION SCREEN
- ④ SUPPLY AIR REGISTER
- ⑤ RETURN AIR GRILLE
- ⑥ LIGHT FIXTURE

SYMBOLS:

- Ⓢ RECESSED CEILING SPEAKERS



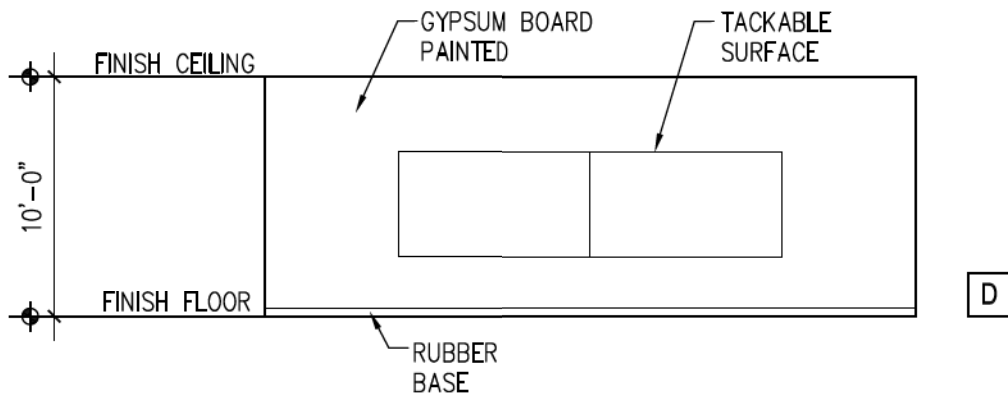
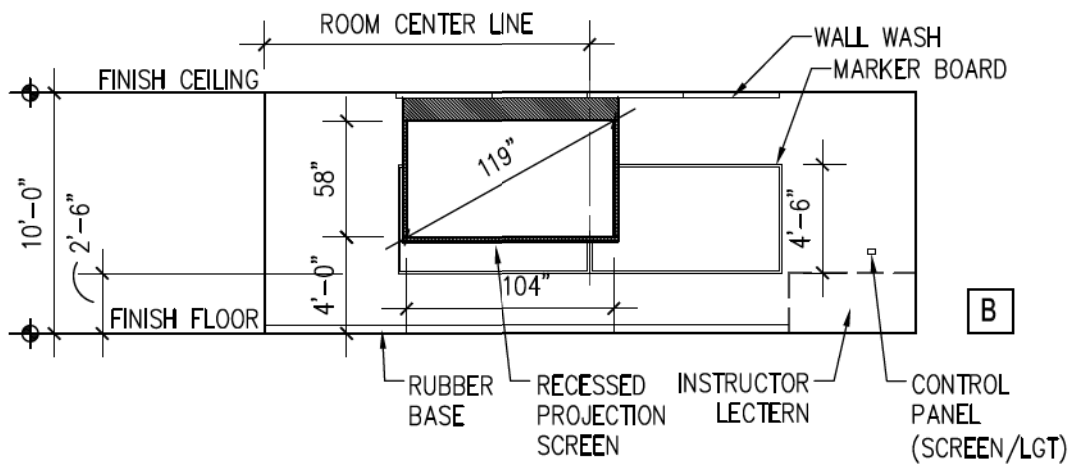
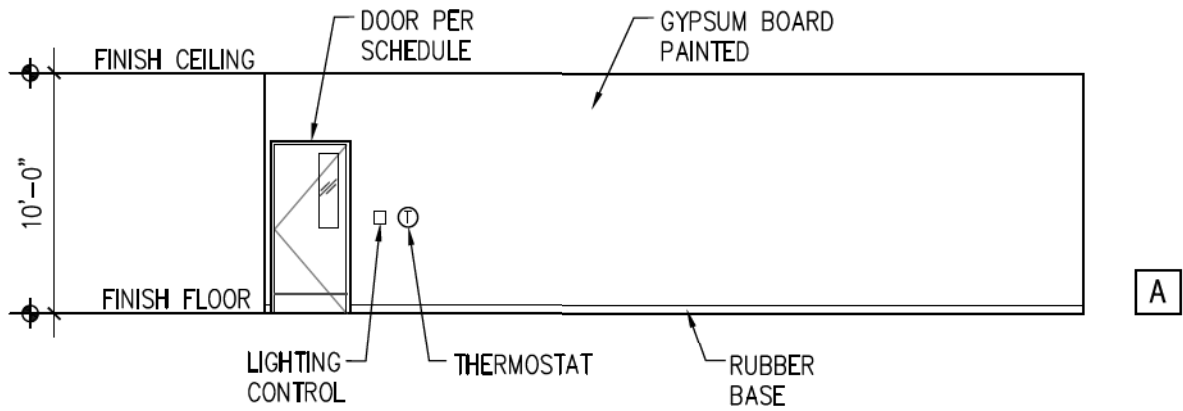
LONG BEACH COMMUNITY COLLEGE DISTRICT
FACILITY SERVICES DIVISION
DESIGN GUIDELINES BY ROOM TYPE

DISTRICT STANDARDS
COMPUTER LAB 1 - REFLECTED CEILING PLAN

DRAWING NO.

A - CPL1.2

DATE: 18DEC2009



SCALE: 1/8" = 1'-0"



LONG BEACH COMMUNITY COLLEGE DISTRICT
 FACILITY SERVICES DIVISION
 DESIGN GUIDELINES BY ROOM TYPE
 DISTRICT STANDARDS
 COMPUTER LAB 1 - INTERIOR ELEVATIONS

DRAWING NO.

A - CPL1.3

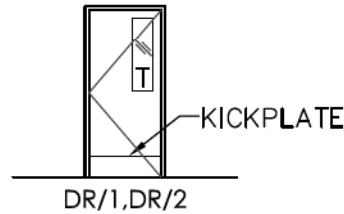
DATE: 18DEC2009

FINISH SCHEDULE

ROOM TYPE	FLOOR		CEILING	WALLS				CASEWORK FACE	COUNTER TOPS
	FINISH	BASE	MATERIAL	NORTH (A)	EAST (B)	SOUTH (B)	WEST (D)		
COMPUTER LAB	VCT OR MARMOLEUM TILE	RUBBER BASE	ACOUSTIC TILE	GYPSUM BOARD PAINTED	GYPSUM BOARD PAINTED	GYPSUM BOARD PAINTED	GYPSUM BOARD PAINTED	PLASTIC LAMINATE	PLASTIC LAMINATE

DOOR SCHEDULE

SPACE	DOOR				FRAME	
	TYPE	CORE	CONST.	FACE/ FINISH	MATER.	FINISH
COMPUTER LAB	DR/1, DR/2	SOLID	WOOD	GLASS/ WOOD	AL	FF



WALL TYPES

ROOM TYPE	1	2
	BETWEEN CORRIDOR AND COMPUTER LAB	BETWEEN LAB AND ALL OTHER ROOMS
COMPUTER LAB	P-2	P-4 WILL BE MINIMUM, BUT MOST STRINGENT DESIGN WILL BE INSTALLED WHERE REQUIRED.

NOTE: WALL TYPES ARE TAKEN FROM ADG-1 (ACOUSTIC DESIGN GUIDELINES)

FURNITURE SCHEDULE

	FURNITURE	TYPE	MANUFACTURER/DIST.	MODEL NAME/NUMBER
COMPUTER LAB 1A	LAPTOP GARAGE TABLE	MOVABLE	KI	WORKZONE LAPTOP GARAGE TABLES*
	CHAIRS	MOVABLE	KI	RAPTURE FOUR-LEG ARMLESS
COMPUTER LAB 1B	TABLE	MOVABLE	VERSA/TANGRAM	VERSA TABLE
	CHAIRS	MOVABLE	STEELCASE/TANGRAM	A LA CARTE
	INSTRUCTOR LECTERN	FIXED	(REFER TO 'AUDIO VISUAL SYSTEMS OVERVIEW' FOR DETAILED LAYOUT)	-

NOTE: ITEMS TO BE COORDINATED WITH FURNITURE VENDOR INCLUDE, BUT ARE NOT LIMITED TO: ACCESS PANELS FOR POWER/DATA, REQUIRED ANCHORAGE/BACKING FOR FURNITURE 60" AND HIGHER, TABLE GROMMETS FOR POWER/DATA ACCESS, FLOOR BOX LOCATION.

* ALL WORKZONE TABLES ARE MANUFACTURED AS "CUSTOM". INCLUSION OF ANY REQUIRED ELECTRICAL DISTRIBUTION/INDIVIDUAL ELECTRICAL COMPONENTS TO BE COORDINATED WITH DISTRICT/FURNITURE VENDOR.



LONG BEACH COMMUNITY COLLEGE DISTRICT

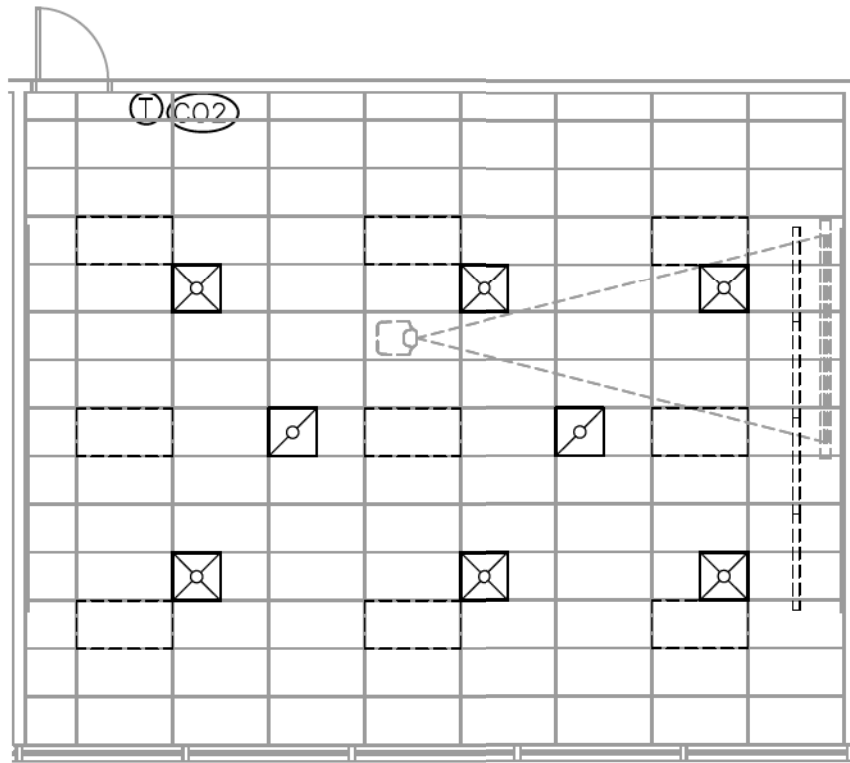
LONG BEACH COMMUNITY COLLEGE DISTRICT
FACILITY SERVICES DIVISION
DESIGN GUIDELINES BY ROOM TYPE

DISTRICT STANDARDS
COMPUTER LAB 1 - SCHEDULES

DRAWING NO.

A - CPL1.4

DATE: 18DEC2009








SCALE: 1/8" = 1'-0"

GENERAL NOTES:

1. COORDINATE DIFFUSER/GRILLE LOCATIONS WITH LIGHTING LAYOUT, CEILING GRID AND AV EQUIPMENT
2. QUANTITY OF GRILLES/DIFFUSERS SHALL BE DETERMINED BY AIR FLOW VELOCITY AND MINIMIZED FRICTION LOSS. SELECTION OF GRILLES AND DIFFUSERS SHALL BE AS REQUIRED TO MAINTAIN NC RATING AS DESCRIBED IN ACOUSTICAL GUIDELINES.
3. MAINTAIN VELOCITY OF 500 FPM OR LOWER FOR BRANCH DUCT TO DIFFUSERS.
4. DIFFUSERS NEAREST TO PROJECTION SCREEN SHALL BE SIZED AT A LOW VELOCITY TO PREVENT MOVEMENT OF SCREEN.
5. THERMOSTAT AND SENSORS SHALL BE COMPATIBLE WITH SIEMEN'S BUILDING AUTOMATION SYSTEM; VIA BACNET PROTOCOL.
6. DUCT SIZING FOR MAINS AND SUBMAINS TO BE SIZED PER SPECIFICATIONS AND TO MINIMIZE FRICTION LOSS; DUCT BRANCHES SHALL BE PROVIDED WITH MANUAL VOLUME DAMPERS.
7. BRANCH DUCT SIZING SHALL ACCOMMODATE A MAXIMUM NC RATING OF 30.
8. REFER TO SPECIFICATIONS FOR NOISE CRITERIA WHEN SELECTING DIFFUSERS

SYMBOLS:

-  SUPPLY AIR REGISTER
-  RETURN AIR GRILLE
-  THERMOSTAT/TEMPERATURE SENSOR
-  CO2 SENSOR
-  CEILING FIXTURE



LONG BEACH COMMUNITY COLLEGE DISTRICT

LONG BEACH COMMUNITY COLLEGE DISTRICT

FACILITY SERVICES DIVISION

DESIGN GUIDELINES BY ROOM TYPE

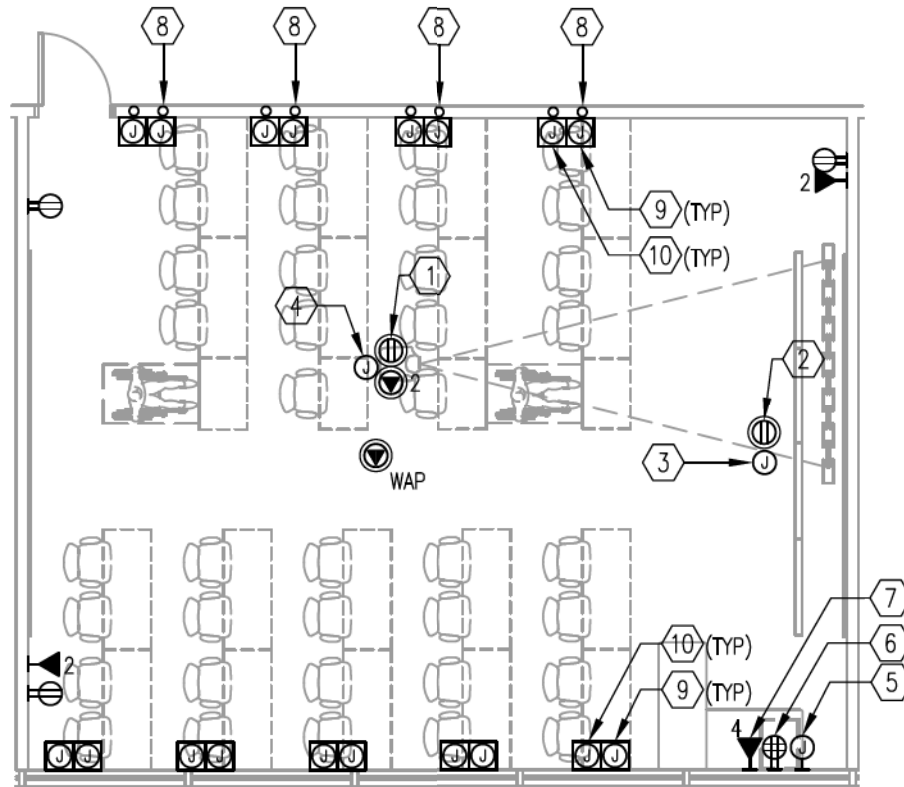
DISTRICT STANDARDS

COMPUTER LAB 1 - HVAC PLAN

DRAWING NO.

M-CPL1.1

DATE: 18DEC2009



SCALE: 1/8" = 1'-0"

GENERAL NOTES:

1. PROVIDE FIRE ALARM DEVICES AS REQUIRED BY CODE AND DISTRICT.

KEYNOTES:

- | | |
|--|---|
| <p>① CEILING MOUNTED RECEPTACLE FOR PROJECTOR</p> <p>② PROVIDE RECEPTACLE WITH DEDICATED CIRCUIT IN CEILING SPACE FOR FUTURE SMART BOARD EXTENSION</p> <p>③ PROVIDE JUNCTIONBOX IN CEILING SPACE WITH 1 1/4-INCH CONDUIT. CONDUIT TO BE ROUTED TO NEAREST CABLE TRAY</p> <p>④ CEILING MOUNTED JUNCTION BOX WITH TWO 1 1/4" CONDUIT TO TEACHERS WORK STATION JUNCTION BOX FOR FUTURE SMART BOARD EXTENSION</p> <p>⑤ RECESSED JUNCTION BOX</p> <p>⑥ DEDICATED CIRCUIT SHALL BE PROVIDED WITH ISOLATED GROUND</p> <p>⑦ 1-VOIP, 1-DEDICATED PC, 1-GUEST LAPTOP, 1-GLOBAL</p> | <p>⑧ (2) 1 1/4-INCH CONDUIT SHALL BE STUB 12-INCH ABOVE CEILING SPACE FOR TELECOM/DATA</p> <p>⑨ TELECOM JUNCTIONBOX SHALL BE 4X2</p> <p>⑩ PROVIDE 4-WIRE CIRCUITS AND THE CIRCUITS CANNOT BE SHARED</p> |
|--|---|

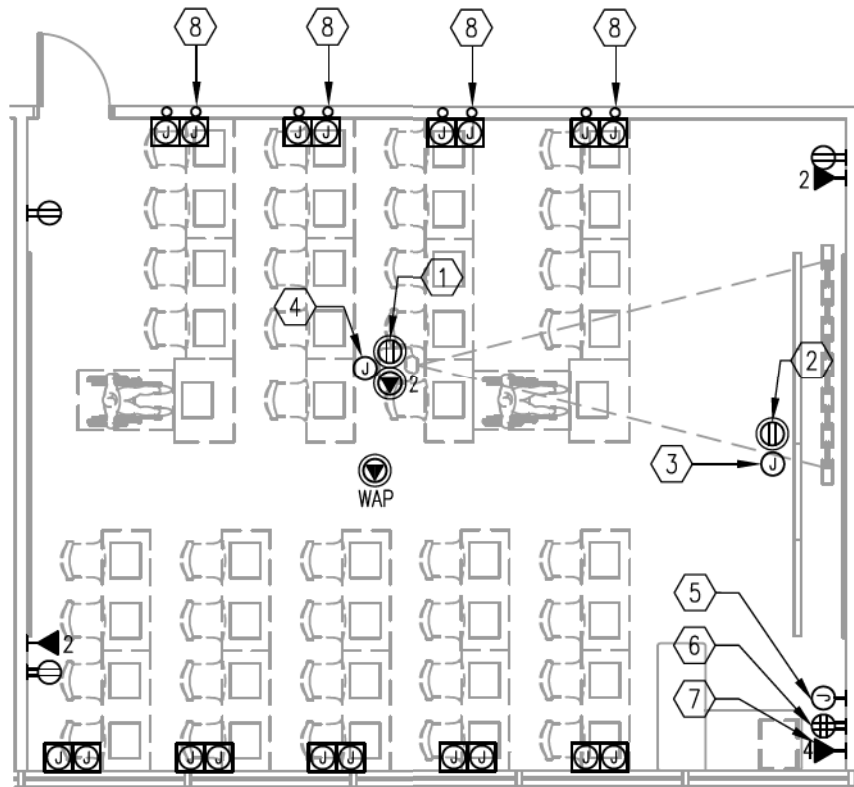
SYMBOLS:

- | | |
|--------|--|
| ① | KEYNOTE ITEMS. REFER TO KEYNOTE DESCRIPTION. |
| ⊕ | DUPLEX - WALL |
| ⊕
x | WALL MTD. DATA OUTLET WITH A 1 1/4" CONDUIT TO ACCESSIBLE CEILING SPACE, MOUNTED +15" AFF, UNLESS NOTED OTHERWISE, 'x' INDICATES NUMBER OF CAT6 STATION CABLES |
| Ⓜ | DUPLEX - CEILING |
| Ⓜ
2 | 2-DATA - CEILING |
| Ⓝ | JUNCTION BOX - CEILING |
| WAP | WIRELESS ACCESS POINT - CEILING |



LONG BEACH COMMUNITY COLLEGE DISTRICT
FACILITY SERVICES DIVISION
DESIGN GUIDELINES BY ROOM TYPE
DISTRICT STANDARDS
COMPUTER LAB 1A (COMPUTER TABLES) - POWER/TELECOM

DRAWING NO.
E-CPL1.1A
DATE: 18DEC2009



SCALE: 1/8" = 1'-0"

GENERAL NOTES:

1. PROVIDE FIRE ALARM DEVICES AS REQUIRED BY CODE AND DESIGN GUIDE.

KEYNOTES:

SYMBOLS:

- ① CEILING MOUNTED RECEPTACLE FOR PROJECTOR
- ② PROVIDE RECEPTACLE WITH DEDICATED CIRCUIT IN CEILING SPACE FOR FUTURE SMART BOARD EXTENSION
- ③ PROVIDE JUNCTIONBOX IN CEILING SPACE WITH 1 1/4-INCH CONDUIT. CONDUIT TO BE ROUTED TO NEAREST CABLE TRAY
- ④ CEILING MOUNTED JUNCTION BOX WITH TWO 1 1/4" CONDUIT TO TEACHERS WORK STATION JUNCTION BOX.
- ⑤ RECESSED JUNCTION BOX
- ⑥ DEDICATED CIRCUIT SHALL BE PROVIDED WITH ISOLATED GROUND
- ⑦ ONE JACK SHALL BE VOICE
- ⑧ (2) 1 1/4-INCH CONDUIT SHALL BE STUB 12-INCH ABOVE CEILING SPACE FOR TELECOM/DATA

- ① KEYNOTE ITEMS. REFER TO KEYNOTE DESCRIPTION.
- Ⓛ DUPLEX - WALL
- X WALL MTD. DATA OUTLET WITH A 1 1/4" CONDUIT TO ACCESSIBLE CEILING SPACE, MOUNTED +15" AFF, UNLESS NOTED OTHERWISE, 'X' INDICATES NUMBER OF CAT6 STATION CABLES
- Ⓜ DUPLEX - CEILING
- 2 Ⓜ 2-DATA - CEILING
- Ⓜ JUNCTION BOX - CEILING
- WAP WIRELESS ACCESS POINT - CEILING



LONG BEACH COMMUNITY COLLEGE DISTRICT

LONG BEACH COMMUNITY COLLEGE DISTRICT

FACILITY SERVICES DIVISION

DESIGN GUIDELINES BY ROOM TYPE

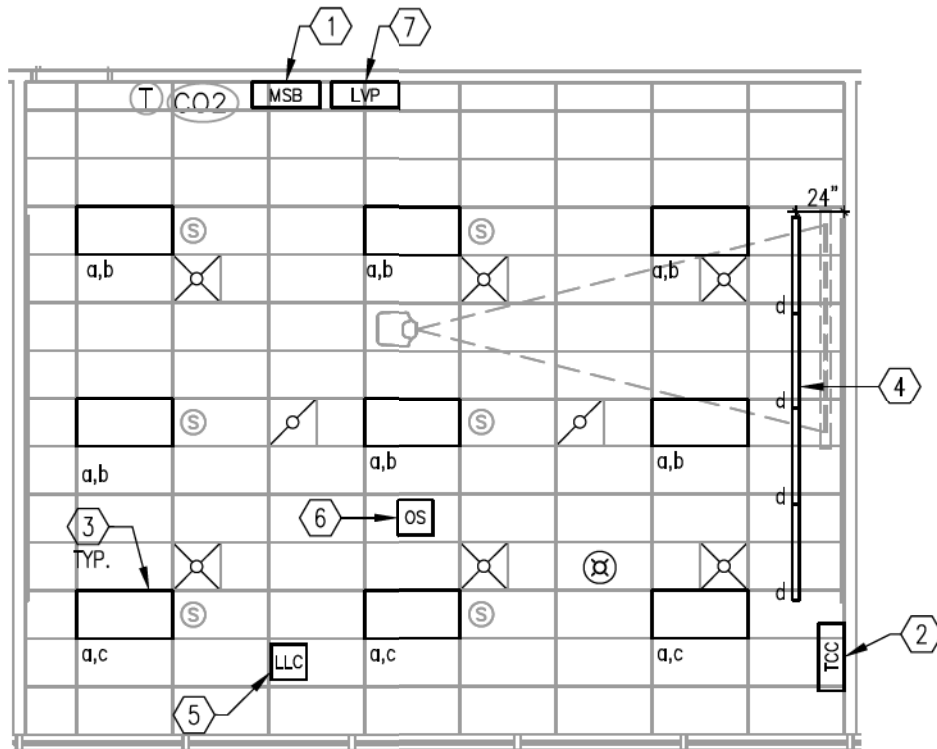
DISTRICT STANDARDS

COMPUTER LAB 1B (LAPTOP GARAGES) - POWER/TELECOM

DRAWING NO.

E-CPL1.1B

DATE: 18DEC2009








SCALE: 1/8" = 1'-0"

KEYNOTES:

- ① MAIN SWITCH BANK.
- ② TEACHER'S CONTROL CENTER SWITCH BANK
- ③ DIRECT/INDIRECT RECESSED FLUORESCENT FIXTURE
- ④ 3 INCHES DEEP SURFACE MOUNTED WALL-WASH
- ⑤ CEILING MOUNTED LIGHT LEVEL CONTROLLER CONNECTED TO LOW VOLTAGE CONTROL PANEL
- ⑥ CEILING/CORNER MOUNTED DUAL TECHNOLOGY OCCUPANCY SENSOR CONNECTED TO LOW VOLTAGE CONTROL PANEL
- ⑦ LOW VOLTAGE RELAY PANEL WITH MINIMUM EIGHT RELAYS IN THE CEILING SPACE

SYMBOLS:

-  SUPPLY AIR REGISTER
-  RETURN AIR GRILLE
-  THERMOSTAT/TEMPERATURE SENSOR
-  CO2 SENSOR
-  FIRE ALARM HORN/STROBE - CEILING



LONG BEACH COMMUNITY COLLEGE DISTRICT
 FACILITY SERVICES DIVISION
 DESIGN GUIDELINES BY ROOM TYPE
 DISTRICT STANDARDS
 COMPUTER LAB 1 - LIGHTING PLAN

DRAWING NO.

E-CPL1.2

DATE: 18DEC2009