

CLINICAL CARE

Patient Registration

Totally 16,973 new clients were registered for availing clinical services at the institute during the reporting year. In addition, 30,133 case files were retrieved for repeat/follow up visits for various evaluations. The geographical and gender-wise details of new clients are given in table 1. Majority of them (16309) were from Karnataka, the state in which the institute is located, followed by the neighboring states of Kerala (328), Tamil Nadu (105), and Andhra Pradesh (74). Also, there were clients from Bangladesh, Saudi Arabia, UAE, U.K, and USA. The clients include 10411 males and 6562 females.

Table 1: Geographical & gender-wise distribution of new clients

Sl. No	Locality	Male	Female	Total
1.	Andra Pradesh	52	22	74
2.	Assam	8	3	11
3.	Bihar	20	5	25
4.	Delhi	2	2	4
5.	Goa	2	0	2
6.	Gujarat	3	0	3
7.	Hariyana	3	1	4
8.	Himachal Pradesh	2	1	3
9.	Jarkhand	5	0	5
10.	Karnataka	9948	6361	16309
11.	Kashmir	1	0	1
12.	Kerala	232	96	328
13.	Madhya Pradesh	2	3	5
14.	Maharastra	10	10	20
15.	Manipur	1	0	1
16.	Mizoram	0	1	1
17.	Orissa	7	4	11
18.	Punjab	0	1	1
19.	Rajasthan	8	1	9
20.	Tamil Nadu	69	36	105
21.	Telangana	7	4	11
22.	Union Territories	2	2	4
23.	Uttar Pradesh	11	4	15
24.	Uttaranchal	1	1	2
25.	West Bengal	10	4	14
26.	Overseas	5	0	5
Total		10411	6562	16973

Speech and Language Assessment and Rehabilitation

Totally, 5040 clients underwent speech and language evaluation which include 3847 new and 1193 review cases. Assessment of 80 new and 168 review cases was carried out in virtual mode and 3767 new and 1025 review cases in physical mode. Of the new cases, 3736 persons were identified with various kinds of speech and language disorders and 111 were found to have normal speech. Whereas, of the 1200 review cases, 1185 persons were with various disorders, and the remaining 15 were normal. Totally, 4797 cases were evaluated physically and 248 virtually. The details are given in tables 2 to 3 and figures 1 to 2.

Table 2 : Assessment of Speech-Language Disorders (Physical mode)

Disorders	Language Disorders			Fluency Disorders			Voice Disorders			Articulation Disorders			Multiple Disorders			Normal			Total	
Months	C	A	G	C	A	G	C	A	G	C	A	G	C	A	G	C	A	G		
April 2021	127	24	2	12	6	0	2	7	4	9	5	1	2	0	0	5	1	1	208	
May 2021	4	1	1	0	0	0	0	0	0	0	0	0	0	0	0	0	0	0	6	
June 2021	33	4	0	5	2	0	0	1	2	1	4	1	2	1	0	4	1	0	61	
July 2021	204	22	4	23	9	0	3	13	3	12	5	1	10	3	0	12	3	0	327	
Aug 2021	229	38	6	24	8	0	5	9	9	14	5	4	4	1	0	4	3	3	366	
Sept 2021	225	24	8	35	11	0	3	14	5	29	8	2	7	1	0	2	2	2	378	
Oct 2021	234	31	16	29	12	1	6	10	6	18	6	1	2	0	0	5	7	1	385	
Nov 2021	210	23	5	18	7	0	0	9	6	27	5	2	24	1	1	2	6	0	346	
Dec 2021	319	85	14	23	9	0	3	14	6	18	5	0	15	3	1	4	7	0	526	
Jan 2022	193	43	3	8	12	0	1	18	6	9	4	1	26	5	1	0	3	1	334	
Feb 2022	214	27	10	24	8	0	1	11	7	14	5	1	32	4	1	7	6	1	373	
March 2022	297	49	0	9	9	0	2	12	8	11	4	0	30	9	0	7	8	2	457	
Total	2289	371	69	210	93	1	26	118	62	162	56	14	154	28	4	52	47	11	3767 (N) + 1030 (R)	
Disorder Wise	2729 (N)+ 844 (R)			304 (N)+ 32 (R)			206 (N)+ 22 (R)			232 (N) + 48 (R)			186 (N) +69(R)			110 (N)+15(R)				
Over All	4797																			

C- Child, A-Adult, G-Geriatric, N-New cases, R-Review cases

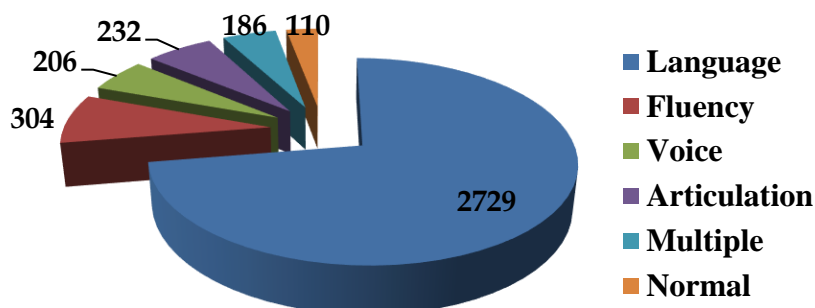


Figure: 1 – Assessment of Speech-Language Disorders (New cases, disorder-wise – Physical mode)

Table 3: Assessment of Speech-Language Disorders (Virtual mode)

Disorders	Language Disorders			Fluency Disorders			Voice Disorders			Articulation Disorders			Multiple Disorders			Normal			Total
Months	C	A	G	C	A	G	C	A	G	C	A	G	C	A	G	C	A	G	
April 2021	8	1	0	2	0	0	0	0	0	0	0	0	0	0	0	0	0	0	11
May 2021	19	0	0	3	1	0	0	0	1	1	1	1	1	0	0	1	0	0	29
June 2021	18	2	0	0	2	0	0	0	0	2	0	0	0	0	0	0	0	0	24
July 2021	10	0	1	2	1	0	0	0	0	1	0	0	1	0	0	0	0	0	16
Aug 2021 to March 2022	-																		
Total	55	3	1	7	4	0	0	0	1	4	1	1	2	0	0	1	0	0	80 (N) + 168 (R)
Disorder Wise	59 (N)+119 (R)			11 (N)+12 (R)			1 (N)+2 (R)			6 (N) + 16 (R)			2 (N) + 19 (R)			1 (N)+0 (R)			
Over All	248																		

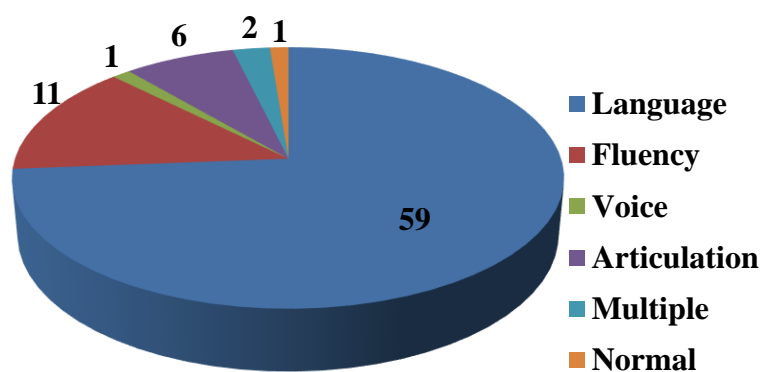


Figure: 2 – Assessment of Speech-Language Disorders (*New cases, disorder-wise – Virtual mode*)

Clients requiring further management were given various speech/language therapies depending upon the type and severity of disorder, for daily sessions of 45 minutes duration. In addition to the normal physical mode, the therapy sessions were conducted in virtual mode. A total of 2500 persons with speech/ language disorders underwent therapy in physical mode in 12191 sessions and 3413 persons underwent therapy in virtual mode in 16475 sessions during the reporting year. The details of disorder-wise therapy carried out are given in tables 4 to 5 and figures 3 to 4.

Table 4 : Speech-Language Therapy (Physical mode)

Disorders	Language Disorders			Voice Disorders			Articulation Disorders			Multiple Disorders			MSD			LD			Total	
Months	C	A	G	C	A	G	C	A	G	C	A	G	C	A	G	C	A	G		
April 2021	213	4	0	2	11	1	17	2	1	0	0	0	50	0	0	8	1	0	310	
May 2021	Therapy sessions were carried out in Virtual mode																			
June 2021																				
July 2021																				
Aug 2021																				
Sept 2021																				
Oct 2021	215	1	1	3	8	2	13	2	0	54	0	0	4	0	0	7	0	0	310	
Nov 2021	322	5	2	2	10	3	27	5	1	57	0	0	12	0	0	5	0	0	451	
Dec 2021	419	8	4	3	16	3	33	6	3	74	0	0	9	0	0	7	0	0	585	
Jan 2022	420	10	4	2	14	0	29	7	4	74	0	0	14	0	0	7	0	0	585	
Feb 2022	5	0	0	0	0	0	1	0	0	0	0	0	1	0	0	0	0	0	7	
Mar 2022	178	11	0	1	6	5	13	4	2	5	0	0	27	0	0	0	0	0	252	
Total	1772	39	11	13	65	14	133	26	11	264	0	0	117	0	0	34	1	0	2500	
Disorder Wise	1822			92			170			264			117			35				
Total no. of Cases	2500																			
Total no. of Sessions	12191																			

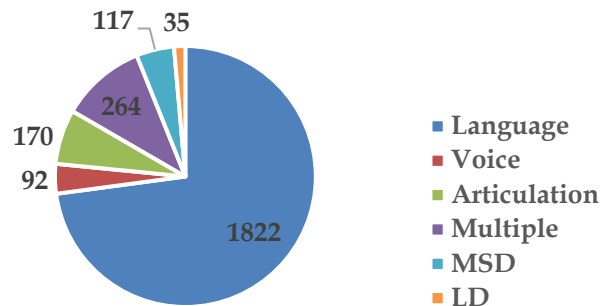


Figure 3: Overall disorder-wise Speech-Language Therapy (Physical mode)

Table 5: Speech-Language Therapy (Virtual mode)

Disorders	Language Disorders			Voice Disorders			Articulation Disorders			Multiple Disorders			MSD			LD			Total
Months	C	A	G	C	A	G	C	A	G	C	A	G	C	A	G	C	A	G	
April 2021	99	4	0	0	4	1	11	2	0	0	0	0	13	0	0	0	0	0	134
May 2021	199	8	3	2	5	3	30	8	4	0	0	0	57	0	0	10	0	0	329
June 2021	284	9	4	0	6	3	30	5	2	0	0	0	57	0	0	10	1	0	411
July 2021	310	11	5	3	6	3	32	7	2	46	0	0	12	0	0	9	2	0	448
Aug 2021	296	10	4	2	7	3	31	7	3	43	0	0	12	0	0	9	2	0	429
Sept 2021	155	3	3	1	8	2	18	5	0	27	0	0	7	0	0	3	0	0	232
Oct 2021	98	4	3	1	3	2	8	5	0	17	0	0	3	0	0	1	0	0	145
Nov 2021	1	3	3	0	1	0	0	2	0	0	0	0	0	0	0	0	0	0	10
Dec 2021	0	0	0	0	0	0	0	0	0	0	0	0	0	0	0	0	0	0	0
Jan 2022	376	8	4	1	10	2	27	5	4	67	0	0	9	0	0	4	0	0	517
Feb 2022	416	10	4	1	13	2	27	7	4	12	0	0	70	0	0	4	0	0	570
Mar 2022	137	7	0	0	8	1	8	3	2	3	0	0	18	0	0	1	0	0	188
Total	2371	77	33	11	71	22	222	56	21	215	0	0	258	0	0	51	5	0	3413
Disorder wise	2481			104			299			215			258			56			
Total no. of Cases	3413																		
Total no. of Sessions	16475																		

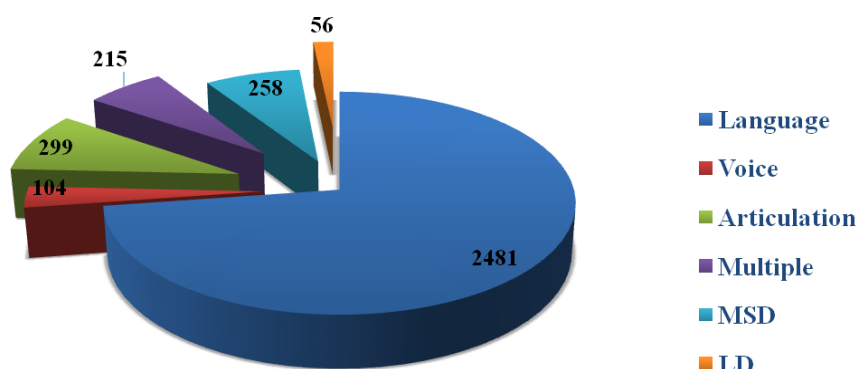


Figure 4: Overall disorder-wise Speech-Language Therapy (Virtual mode)

Speech and language assessment and therapeutic services were also provided at the DHLS centres of the Institute located in different parts of the country, the details of which are given in table 6.

Table 6 : Speech-Language clinical services at the DHLS Centres

Assessment						Therapy				
Centers	Language	Voice	Phonology	Fluency	MSD/ Dysphasia	Language	Voice	Phonology	Fluency	MSD/ Dysphasia
Mysore	117	04	06	07	02	151	-	-	-	-
Ranchi	25	03	11	13	01	29	14	13	30	-
New Delhi	160	180	80	50	29	320	220	190	40	-
Bhagalpur	30	02	05	07	-	80	19	28	35	-
Mumbai	388	03	03	06	15	463	03	05	13	02
Ajmer	299	110	133	121	32	119	115	49	70	13

Audiological Assessment and Rehabilitation

Hearing evaluations were carried out for the registered clients suffering from hearing problems. A total of 12841 persons were seen in the Audiology outpatient department and hearing evaluation was carried out for 10257 persons in the Hearing Evaluation section. Of the 10257 clients evaluated, 4094 were female and 6163 male. The details of the audiological evaluation are given in table 7.

Table 7: Hearing Evaluation

Sl.	Category	Total
1	Clients seen in Outpatient department	12841
2	Clients seen in camp	746
3	Hearing Evaluation	10257
4	Normal hearing	3302
5	Minimal	1939
6	Mild	2340
7	Moderate	3126
8	Moderately severe	2712
9	Severe	2171
10	Profound	2342
11	Minimal to mild	17
12	Mild to moderate	212
13	Moderate to severe	183
14	Moderately severe to severe	235
15	Severe to profound	866

16	Moderate to severe	312
17	Sloping	690
18	Ears tested having <ul style="list-style-type: none"> • Conductive hearing • Mixed hearing loss • Sensorineural hearing loss 	2346 3270 5748
19	Clients with unilateral hearing loss	1000
20	Clients with bilateral hearing loss	8074
21	Ears with auditory dys-synchrony	83
22	Clients with auditory processing disorder	7
23	Clients with functional hearing loss	53
24	Clients - tinnitus evaluation	191
25	Clients for Pure Tone Audiometry	8710
26	Clients for Speech Audiometry	5393
27	Clients for Immittance evaluation	9833
28	Clients for Otoacoustic Element	3236
29	Clients for Auditory Brainstem Response	2007
30	Clients for Vestibular Evoked Myogenic Potential	231
31	Clients for Video Head Impulse Tests	2
32	Clients for Behavioral Observation Audiometry	353
33	Clients for Visual Reinforcement Audiometry	89
34	Clients for LLR	7
35	Behavioral Vestibular Assessment	7

Hearing aid trial and prescription were carried out for clients in need for amplification and/or assistive listening devices. Clients evaluated of hearing aids were 5557 and 2935 hearing aids were prescribed at AIISH. Of the 5557 clients evaluated, 2054 were female and 3503 male. The details are given in table 8 and figure 5.

Table 8: Hearing Aid Trial

Hearing Aid Trial	Total
No. of clients seen for Hearing Aid Trial	5557
Hearing aids prescribed at AIISH	2935
Clients seen in camp	170
• Body level hearing aids	4
• Analogue BTE hearing aids	1969
• Digital BTE hearing aids	2994
• Digital ITC hearing aids	23
• Digital CIC hearing aids	30
• Digital RIC hearing aids	487
• Testing for CI candidacy	107
No. of clients recommended	
Auditory training	716
Speech reading	228
Unaided/aided audiograms	148
Aided audiogram for Cochlear Implant	26
Behavioural Observation Audiometry	37
Aided Visual reinforcement Audiometry	41
Conditioning	398
Programming of digital Hearing Aid	2521
Reprogramming of Hearing Aid	1198
Retrial with Custom Earmold	71
Recommended for Cochlear Implant candidacy	111

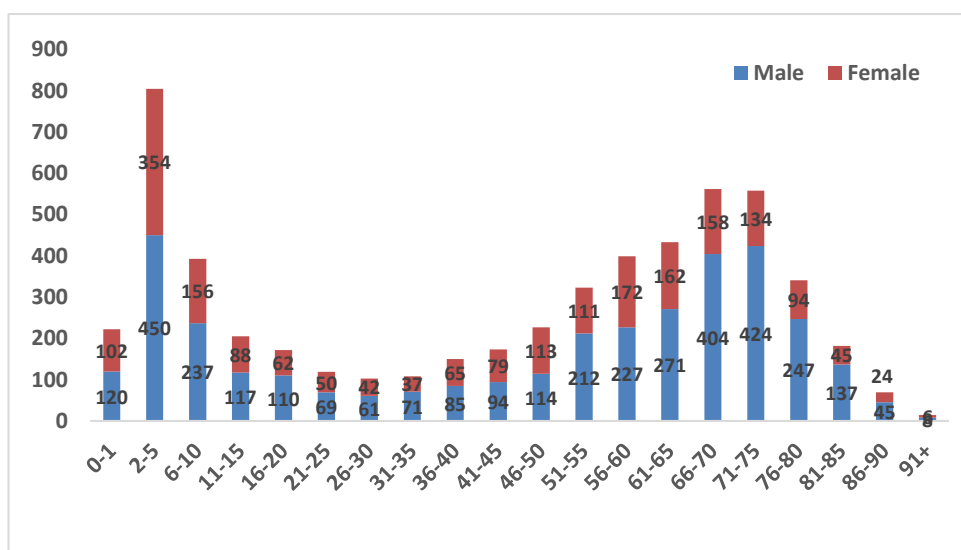


Figure 5: Hearing Aid Trial

The Earmold lab served 5165 clients for making custom earmolds. These include 814 new and 4333 old clients at AIISH, and 18 in camps. The detailed earmold statistics are given in table 9. The Institute generated an income of Rs. 10,01,931/- through earmold making during the period.

Table 9: Earmold Statistics

Category	Total
New clients	814
Old clients	4333
At Camp	18
Ear impressions taken	
Free-of-cost	3753
100% payment	3907
CPL impressions	2
Ear Molds completed	4234
No. Molds Lacquered	1186
No. of sound tube issued	1420
Hard regular molds	104
Hard shell mold made	21
Hard canal molds	50
Soft canal mold	685
Instant molds	66
Swimmer plug (soft)	19
Swimmer plug (hard)	1049
No. of ear blocked	75
Earmolds with acoustic modifications	2740
No. of students posted	206

Audiological services were also provided at the DHLS centres of the Institute located in different parts of the country, the details of which are given in table 10.

Table 10: Audiological services at the DHLS centres

Centers	OPD (Case history)	Evaluation	Earmolds	Hearing aid trial (HAT)	Listening
Mysore	-	303	501	168	-
Ranchi	1468	1468	-	-	-
New Delhi	310	310	-	28	83
Bhagalpur	720	720	-	-	-
Mumbai	91	91	-	-	-
Ajmer	1045	1045	-	-	42

Referred Evaluation-1: Psychological Assessment and Rehabilitation

Psychological assessment was carried out for the referred cases registered at the Department of Clinical Psychology. This includes routine psycho-diagnostic assessment for screening and identification, detailed psychological assessment (including specialized assessment such as assessment for learning disability, neuropsychological assessment, assessment for disability certification, behavioral assessment and assessment for skill training), and psychological intervention (including behavior modification programs, home based skill training programs, cognitive-behaviour and group intervention programs for caregivers). Routine psycho-diagnostic assessment was carried out for 3842 new and 1249 review cases at the Department during the reporting year. The detailed is given in table 11.

Table 11: Routine Psycho-Diagnostic Assessment

Classification of disorders according to the criteria included in Chapter V (F) of ICD-10		
F 70#	Mental retardation	1,067
F 80.0	Specific speech articulation disorder	221
F 80.1	Expressive language disorder	411
F 80.2	Receptive language disorder	950
F 88#	Other disorders of psychological development	218
F81#	Specific developmental disorders of scholastic skills	275
F 84#	Pervasive developmental disorders	46
F 98.5	Stuttering (stammering)	347
F 44.4	Dissociative motor disorders	33
F00-F99	<i>Other disorders included in Chapter V (F) of ICD-10</i>	147
<i>The code # refers to "condensed" codes (Ref ICD-IO PC)</i>		
Classification according to the criteria included in Chapter XVIII (R) of ICD 10		
R 47.0	Dysphasia and aphasia	69
R 41.83	Borderline Intellectual Functioning	522
<i>Avg. Intelligence with disorders classified elsewhere</i>		785
TOTAL		5091

Psychological assessment carried out include intelligence / developmental assessment (192 cases in 543 sessions), psycho-educational assessment (25 cases in 58 sessions), neuropsychological assessment (one case in one session), behavioural assessment (eight cases in eight sessions), forensic assessment (16 cases in 41 sessions) and others (13 cases in 14 sessions). In addition, Behaviour Modification (24 cases in 25 sessions), Cognitive behaviour therapy (one case in four sessions) and psychological intervention was done for 45 clients in 92 sessions.

Referred Evaluation-2: Otolaryngological Assessment and Rehabilitation

The Otorhino-laryngological assessment and rehabilitation for persons with communication disorders were carried out in the Department of Otolaryngology. In addition to the clinical services provided at the Institute, the Department staffs rendered diagnostic, therapeutic and surgical services at K.R. Hospital, Mysore Medical College, Mysuru. The details of the Otolaryngological evaluation are given in table 12.

Table 12: Otolaryngological Evaluation

Sl.	Category	Total
1	Clients seen at AIISH	32095
2	New cases	14980
3	Review cases	17115
4	Clients seen in K.R. Hospital	6076
5	No. of Major Operations at K.R. Hospitals	51
6	No. of Minor Operations at K.R. Hospitals	333
7	Microscopic	6774
8	Stroboscopic/Endoscopic	293
9	Oto Endoscopic	81
10	Diagnostic Naso endoscopy	37

Specialized Clinical Services

The institute provided a variety of specialized clinical services for the persons with communication disorders in both physical and virtual mode during the reporting year. The details are provided in tables 13, 14 and 15.

Table 13: Evaluation at the Special Clinics

Unit	Total
Augmentative and Alternative Communication (AAC)	156
Autism Spectrum Disorders (ASD)	239
Clinic for Adult and Elderly Persons with Language Disorders (CAEPLD)	60
Dysphagia Unit	12
Fluency	56
Implantable Hearing Devices Unit	574
• No. of switch on - 19	

<ul style="list-style-type: none"> • Mapping for CI - 181 • Trouble shooting CI devices - 95 • Counselling for CI clients - 279 	
Learning Disability (LD)	37
Listening Training Unit (LTU)	223
Motor Speech Disorders (MSD)	50
Phonology	30
Structure Orofacial Anomalies (U-SOFA)	122
Vertigo Clinic	73
Voice	59
Total	1691

Table 14: Rehabilitation at the special clinics (Virtual mode)

Unit	Child	Adult	Total Sessions
AAC	22	-	96
ADHD	64	-	172
ASD	814	1	2870
CAEPLD	-	134	744
Fluency	324	132	1658
LD	61	5	258
LT	120	10	2990
MSD	490	-	2219
Phonology	300	29	552
U-SOFA	72	2	389
Voice	20	154	512
Total	2287	467	12460

ADHD: Attention Deficit Hyperactivity Disorder

Table 15: Rehabilitation at the special clinics (Physical mode)

Unit	Child	Adult	Total Sessions
AAC	15	-	86
ADHD	30	-	228
ASD	543	10	3219
CAEPLD	-	75	415
Fluency	180	71	1187
Implantable Hearing Devices Unit	279	-	279
ISL	09	-	19
LD	36	1	188
LT	190	33	11051

MSD	225	-	1832
Phonology	234	24	669
U-SOFA	52	2	297
Vertigo	-	436	436
Voice	22	120	531
Total	1815	772	20437

ADHD: Attention Deficit Hyperactivity Disorder

IHDU: Implantable Hearing Devices Unit

ISL : Indian Sign Language

Special Educational Services

The following educational services were provided to the children with special needs at the pre-school, attached to the Department of Special Education during the reporting year.

- i) **Special Educational Assessment:** Educational Assessment services were offered for 508 children with communication disorders in 508 sessions to determine readiness for schooling and to suggest an appropriate grade, placement as well as necessary services.
- ii) **Parent Infant Program (PIP):** PIP was provided to very young children ranging from birth to 2.5 years with the objective of improving physical, cognitive, communication, social and emotional skills as detailed in *figure 6*.

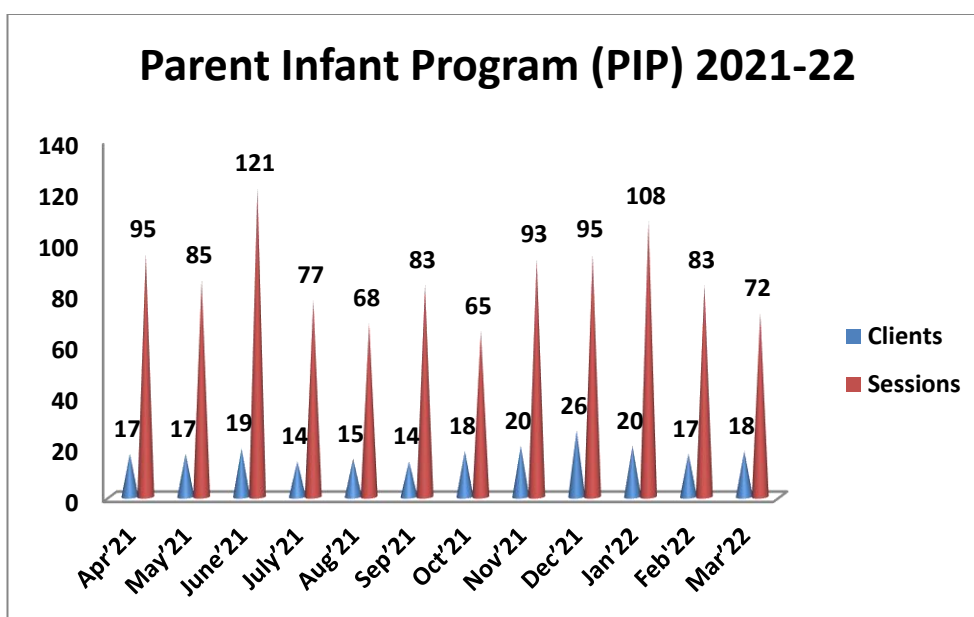


Figure 6: Parent Infant Program

- iii) **Preschool Parent Empowerment Program (PPEP):** PPEP was provided to caregivers of children ranging from 2.5-3 years before formal admission to preschool with the aim of empowering caregivers to train their children and get adjusted to preschool atmosphere. The details are provided in table 16.

Table 16: Preschool Parent Empowerment Program

	Apr'21	May'21	June'21	July'21	Aug'21	Sep'21	Oct'21	Nov'21	Dec'21	Jan'22	Feb'22	Mar'22	Total
Clients	167	168	168	88	111	134	164	187	162	185	194	241	1969
Sessions	525	525	440	399	399	380	380	380	897	702	797	858	6682

- iv) **Preschool Training & Supplementary Services (PSS):** Preschool service, a preparatory training for children with communication disorders in self-help, cognitive, communication and academic skills necessary for successful schooling, was provided to children in the age range of 3-6 years having hearing impairment, cerebral palsy, and multiple disabilities and to those in the age range of 3-10 years having intellectual disability and autism. The details are given in table 17.

Table 17: Preschool Training

	Apr'21	May'21	June'21	July'21	Aug'21	Sep'21	Oct'21	Nov'21	Dec'21	Jan'22	Feb'22	Mar'22	Total
Clients	167	161	154	209	202	197	194	138	185	187	182	173	2149
Sessions	790	603	571	875	827	763	631	763	1251	957	1220	1109	10360

- v) **Curricular Support Services (CSS) / Individualized Education Program (IEP)/ Demonstration Education Therapy (DET) and Non formal Education Program (NFE):** The CSS was offered to the children with communication disorders, but had certain difficulties in coping with academics as detailed in *figure 7*. The IEP was offered to 101 clients in 487 sessions, who were either dropped out of school or unable to cope with the regular school curriculum. The details of DET and NFE provided are given in table 18.

Table 18: Demonstration Education Therapy (DET) and Non formal Education Program (NFE)

	Apr'21	May'21	June'21	July'21	Aug'21	Sep'21	Oct'21	Nov'21	Dec'21
Clients	1	1	0	0	1	1	1	2	2
Sessions	6	9	0	0	9	9	9	7	12

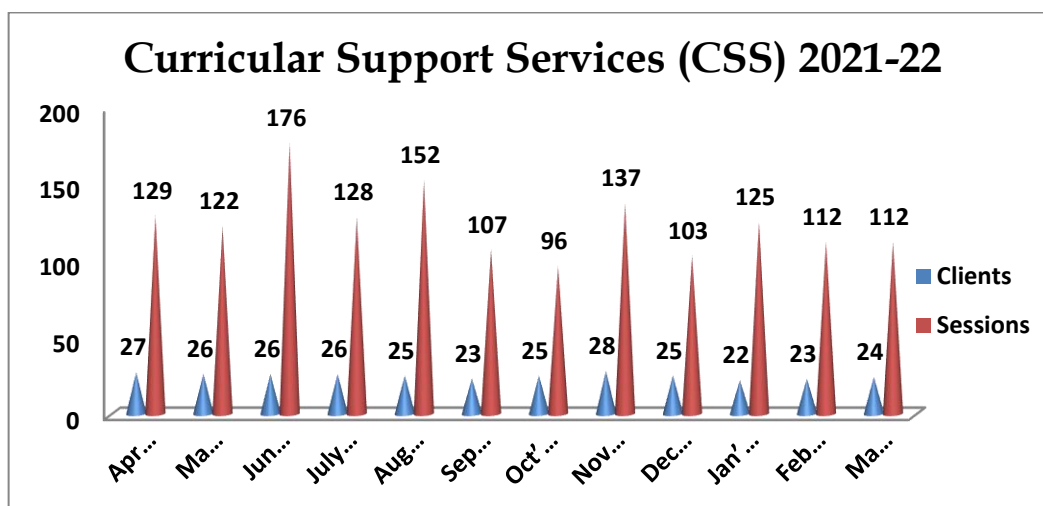


Figure 7: Curricular Support Services (CSS)

- vi) **Speech-Language group therapy:** Group therapy was provided to the children with communication disorders as detailed in figure 8.

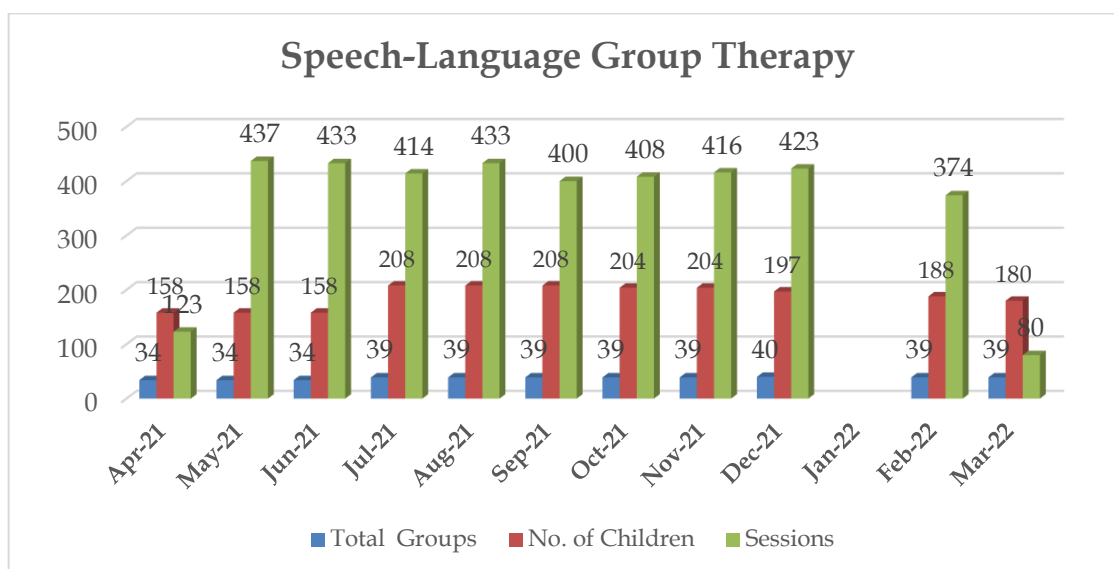


Figure 8: Speech-Language Group Therapy

- vii) **Counselling and guidance:** 116 parents and caregivers of children with communication disorders were counselled in 122 sessions.

Medical Speciality & Allied Health Services

The institute facilitated the services of various medical specialists such as pediatrician, neurologist, plastic surgeon, prosthodontist, orthodontist, phono-surgeon and services of allied health professionals such as physiotherapist and occupational therapist, to the needy clients. Totally, 299 clients underwent physiotherapy in physical and 284 in virtual mode. The total physiotherapy sessions were 3429. Also, 452 clients underwent

occupational therapy in physical and 355 in virtual mode. The total occupational therapy sessions were 4660. In addition, 135, 13, 110, 107, 34, 299, nine & two clients consulted paediatrician, phonosurgeon, plastic surgeon, orthodontist, dietician, neurologist, orthopedician and oncologist respectively. The details are given in figure 9.

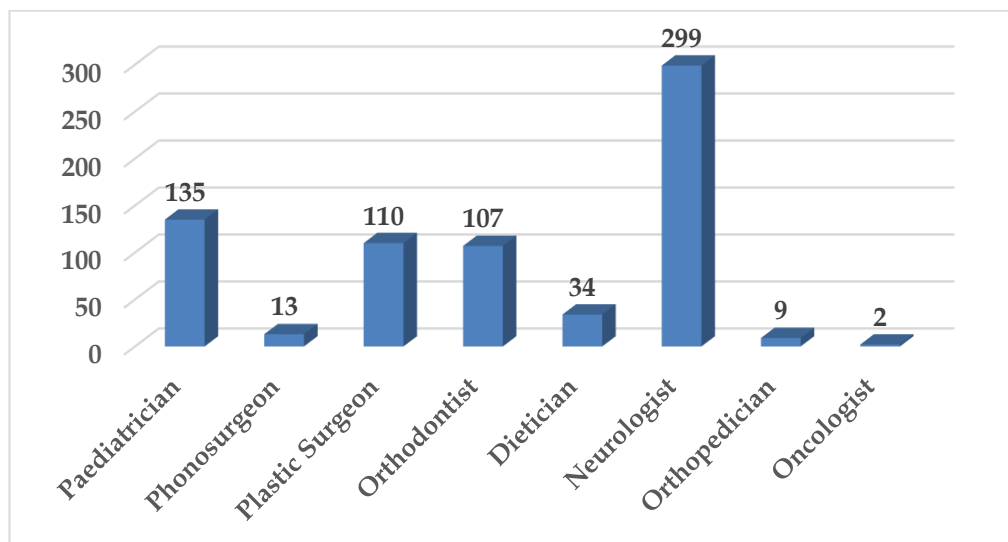


Figure 9: Medical specialty and allied health

Clinical Support Services

The institute extended a diverse range of support services to patients and their family. These include the following.

- **Distribution and Repairing of Aids:** Electro-acoustic evaluation, management and repair of hearing aids were carried out under the aegis of Department of Electronics. Totally 1687 hearing aids were distributed after electro-acoustic evaluation and testing by the Hearing Device Dispensing Unit of the Institute. In addition, the unit issued 70234 hearing aid spares such as hearing aid cells, cords, battery doors, ear hooks, body case, wind weather protector, BET huggies, domes, tips, Wax guard and 2 pin S & V cords. Also, 1164 free hearing aids were distributed under the Client Welfare Fund.

The hearing aids were also distributed free of cost at the Outreach Service Centres (OSC) and Newborn Screening Centres of the Institute as detailed in table 19.

Table 19: Hearing aid distribution at OSCs / NBS Centers

Sl. No.	OSC	No. of hearing aids
1.	Belagavi Institute of Medical Science, Belagavi	14
2.	Community Health Centre, Hullahalli	01
3.	Kodagu Institute of Medical Science, Kodagu	71
4.	Primary Health Centre, Gumballi	76
5.	Sub-divisional Hospital, Sagara	10
6.	Taluk General Hospital, K R Pete	41
7.	Taluk Hospital, Nanjangud	31
8.	Vivekananda Memorial Hospital, H. D. Kote, Sarguru	39
	Total	283

- **Counselling and Guidance:** The professional experts of the Institute provided counselling and guidance on various aspects of the disorders such as treatment procedures, usage and care of tools like hearing aids during the reporting year.

Issue of Certificates: Various certificates like financial aid, income tax exemption, educational scholarship, and school admission were issued to the eligible candidates during the reporting year, the details of which are given in table 20.

Table 20: Details of certificates issued

Particulars	Total
Transfer certificate	28
Evaluation reports	222
Attendance certificate	23
School admission certificate	12
Language Exemption certificate	38
Admission to deaf school	15
Railway concession	96
Bonafide certificate	10
Handicapped Certificate (Pension)	430
Medical Certificate	08

Financial Aid: The institute distributed total amount of Rs. 7,38,945/- among 86 clients below poverty line towards the purchase of hearing aids during the reporting year under the aegis of the Department of Clinical Services.

Clinical Observation Posting

The institute facilitated clinical observation posting for students in the area of communication disorders and allied fields from other institutes in the country and abroad. Around 300 students and staff from 17 institutes across the country were posted for clinical observation in different clinical units and departments of the institute during the reporting year. The details of the institutions are given below.

1. Ayurveda Mahavidyalaya, Shahpur, Belgaum
2. Central University of Karnataka, Kalaburgi
3. Coorg Institute of Dental Sciences, Virajpet, Coorg
4. Department of Shalakyta Tantra, Bengaluru
5. Department of Studies in MSW, University of Mysore, Mysuru
6. Department of Studies in Psychology, SDM College, Ujire
7. Department of Studies in Psychology, Kateel Ashok Pai Memorial College, Shivamogga
8. Government Teacher Training College, Mysuru
9. GSSS Institute of Engineering & Technology, Mysuru
10. Maharaja Institute of Technology, Mysuru
11. Mysore Medical College and Research Center, Mysuru
12. National Institute of Engineering, Mysuru
13. Regional Institute of Education, Mysuru
14. Srinivasa Institute of Medical Sciences & Research, Mangalore
15. St. Agnes Centre for Post-Graduate Studies and Research, Mangalore
16. St. Philomena's College, Mysuru
17. Teresian college, Mysuru