

Answers

Chapter 1

MULTIPLE CHOICE QUESTIONS

1. (b) 2. (b) 3. (a) 4. (b)
5. (c) 6. (a) 7. (d) 8. (b)

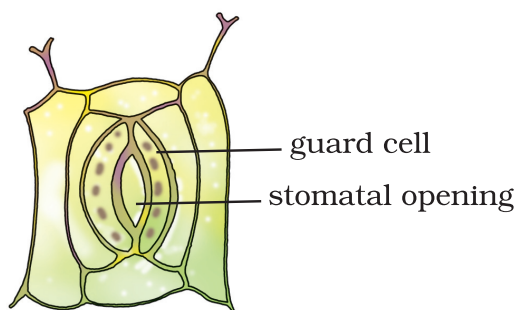
VERY SHORT ANSWER QUESTIONS

9. In both the plants, shoot system and leaves are above ground. They prepare food through photosynthesis and transport it to the underground parts for storage.
10. (a) Sunlight/light energy, (b) carbondioxide.

SHORT ANSWER QUESTIONS

11. The plant survived on the food stored in the stem and roots.
12. (i) PARASITE (ii) SAPROPHYTE
(iii) AUTOTROPH (iv) SYMBIOSIS
13. Roots of pulses (leguminous plants) have a symbiotic association with a bacterium called *Rhizobium* which fixes nitrogen. Hence, farmers need not use nitrogenous fertilizers.
14. Carbohydrates in wheat dough encourage growth of yeast and other saprophytic fungi which break down carbohydrates, and emit a foul smell.
15. (a) chlorophyll (b) water, minerals
(c) carbon dioxide (d) sunlight

16.



LONG ANSWER QUESTIONS

17. (a) (iii); (b) (iv); (c) (i); (d) (v); (e) (ii)
18. It is true that these animals do not eat plants. They hunt and eat herbivorous animals like deer, gaur, bison, zebra, giraffe, etc. which are dependent on plants for food. If there are no plants, herbivorous animals will not survive in which case animals like tiger, wolf, lion and leopard will have nothing to eat.
19. (a) chlorophyll (b) energy (c) energy
(d) photosynthesis (e) carbon dioxide (f) water
(g) food/carbohydrates
20. Number of organisms : 22
(Some examples are given. You may find the rest of the organisms.)

B	R	O	S	E	A	T	C	R	O	W
A	A	G	N	B	H	I	N	D	I	B
N	B	N	G	I	N	G	E	R	C	L
Y	B	A	N	H	B	E	C	O	W	F
A	I	M	U	S	H	R	O	O	M	F
N	T	G	B	E	R	M	W	F	I	O
E	L	E	P	H	A	N	T	S	C	X
T	S	A	E	Y	N	P	H	B	E	E
C	A	R	R	O	T	U	L	S	I	X

- Autotrophs – Rose, Mango, Bhindi, Carrot, Banyan, Tulsi, Ginger, Yam
- Heterotrophs – Elephant, Ant, Yeast, Tiger, Mushroom, Fox, Mice, Owl, Cow, Crow, Rabbit, Bee, Fish
- Herbivores – Elephant, Cow, Rabbit, Bee
- Carnivores – Fox, Tiger
- Omnivores – Ant, Mice, Owl, Crow, Fish
- Saprophytes – Mushroom, Yeast
21. (b) fish, heterotroph
(c) mosquito, parasite
(d) mushroom, saprophyte