

2014
ANNUAL
REPORT



UNIVERSITY OF ILLINOIS
URBANA-CHAMPAIGN • CHICAGO • SPRINGFIELD



IMPACT ILLINOIS



IMPACT ILLINOIS

- 1 Welcome
- 2 University of Illinois Trustees
- 3 University of Illinois Administration
University of Illinois Foundation
University of Illinois Alumni Association
- 4 University of Illinois at Urbana-Champaign
- 4 University of Illinois at Chicago
- 5 University of Illinois at Springfield
- 6 Academics
- 10 Research
- 14 Health Care
- 18 Public Service
- 22 Economic Development
- 26 Student Support
- 27 Financials

UNIVERSITY OF ILLINOIS
URBANA-CHAMPAIGN • CHICAGO • SPRINGFIELD



WELCOME



As one of the world's most accomplished and respected public research universities, the University of Illinois plays a unique and critical role in shaping the future of our state.

Our three campuses train the highly skilled workforce required for success in the 21st century, enrolling a record 78,000-plus students last fall and awarding more than 20,000 degrees annually. We are the state's largest producer of scientists and engineers, and our medical school—the nation's largest—educates one of every six doctors in Illinois, nearly half of the state's dentists, and a third of pharmacists.

University research also helps drive progress and prosperity. Last year, our research portfolio grew to more than \$1 billion, including a record \$857 million in federal funding. It supports the state's economy today—attracting dollars that would have gone to other states if not for our world-class researchers—and for the long term, through our growing efforts to convert innovation into new, job-creating businesses.

This report provides a look at a few of the many University initiatives that are aimed at transforming the lives of our students and improving the lives of every citizen of our great state.

I hope you enjoy it. Thank you for your interest in the University of Illinois.

Sincerely,

Robert A. Easter
President



ESTRADA



FITZGERALD



HASARA



HOLMES



KENNEDY



KORITZ



MCMILLAN



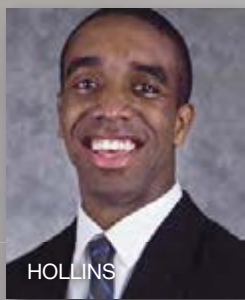
MONTGOMERY



STROBEL



CUNNINGHAM



HOLLINS



LEIBOWITZ

Board of Trustees

The University of Illinois Board of Trustees serves as the final authority of the University. Appointed by the governor, trustees are responsible to the people of Illinois for the proper distribution of funds appropriated by the General Assembly and for the proper administration and governance of the University.

Board members are interested in all aspects of the University. In addition to focusing on appropriate governance, trustees advocate for programs and initiatives that support diversity and sustainability on all three campuses.

Trustees meet every two months and hold positions on various committees including the executive committee; academic and student affairs; audit, finance and facilities; governance, personnel and ethics; and hospital. The board's three-member executive committee meets to transact urgent business. Trustees also serve on several external boards, including those of the U of I Alumni Association and U of I Foundation; the Illinois Research Park; and IllinoisVENTURES, LLC.

Trustees serve on a voluntary, non-remunerated basis. Three student trustees, one from each campus, are elected by the student body to one year terms; one has a binding vote and two have advisory votes.

bot.uillinois.edu

Board of Trustees

(with year term expires)

Ricardo Estrada, Chicago, 2017

Patrick J. Fitzgerald, Chicago, 2019

Karen A. Hasara, Springfield, 2017

Patricia Brown Holmes, Chicago, 2017

Christopher G. Kennedy, Kenilworth, 2015 (Chairman)

Timothy N. Koritz, Roscoe, 2019

Edward L. McMillan, Greenville, 2015

James D. Montgomery, Chicago, 2019

Pamela B. Strobel, Winnetka, 2015

Student Trustees 2013-2014

Michael Cunningham, Urbana, 2014

Jamaal Hollins, Springfield, 2014

Danielle Leibowitz, Chicago, 2014

University Administration

uillinois.edu

President Robert A. Easter and senior staff work together to develop strategies and solutions to address educational and administrative challenges across University of Illinois campuses.

University administration (UA) offices and units provide centralized administrative services that are vital to supporting the primary missions of the institution: instruction, research, public service, and economic development.

UA staff are responsible for communicating the variety and excellence of research and other academic endeavors occurring at the University of Illinois to government, corporate, and civic leaders as well as to alumni and other stakeholders.

Executive Officers

Robert A. Easter, PhD, President

Paula Allen-Meares, PhD,

Chancellor/Vice President,
U of I at Chicago

Susan J. Koch, PhD,

Chancellor/Vice President,
U of I at Springfield

Phyllis M. Wise, PhD,

Chancellor/Vice President,
U of I at Urbana-Champaign

Jerry L. Bauman, PharmD,

Interim Vice President for
Health Affairs

Thomas R. Bearrows, JD,

University Counsel

Thomas P. Hardy, MS, Executive

Director for University
Relations

Susan M. Kies, EdD, Secretary

of the University

Walter K. Knorr, BA, Chief

Financial Officer and Vice
President

Katherine Laing, JD, Executive

Director for Governmental
Relations

Christophe Pierre, PhD, Vice

President for Academic
Affairs

Lawrence B. Schook, PhD, Vice

President for Research

Officers of University-related Organizations

Thomas J. Farrell, PhD,

President, University of
Illinois Foundation

Loren R. Taylor, MA, President,

University of Illinois Alumni
Association

University Administration Services and Functions

Academic affairs

Business and financial services

Ethics administration

Facilities planning

Government relations

Health affairs

Human resources

Information technology and
systems

Planning, administration, and
auditing

Research

Technology and economic
development

University counsel

University relations

University of
Illinois Alumni
Association
uiaa.org



Alumni are a permanent part of the University of Illinois family, and their support of the University of Illinois and the University of Illinois Alumni Association programs, services, and events fosters participation and pride in the institution. The universal membership model expands the reach of the organization and its members. Currently the University has almost 665,000 living alumni.



University of Illinois Foundation
uif.uillinois.edu

The University of Illinois Foundation is the official fund raising and private gift-receiving arm of the University of Illinois and the three campuses. UIF staff work with alumni, friends, faculty, corporations, and campus development staff to promote opportunities that benefit the University. The foundation raised \$2.43 billion during the recent Brilliant Futures campaign. Access Illinois: The Presidential Scholarship Initiative is a three-year, \$100 million fundraising campaign designed to help ensure that the campuses continue to attract and retain the best and brightest students, regardless of their financial need.

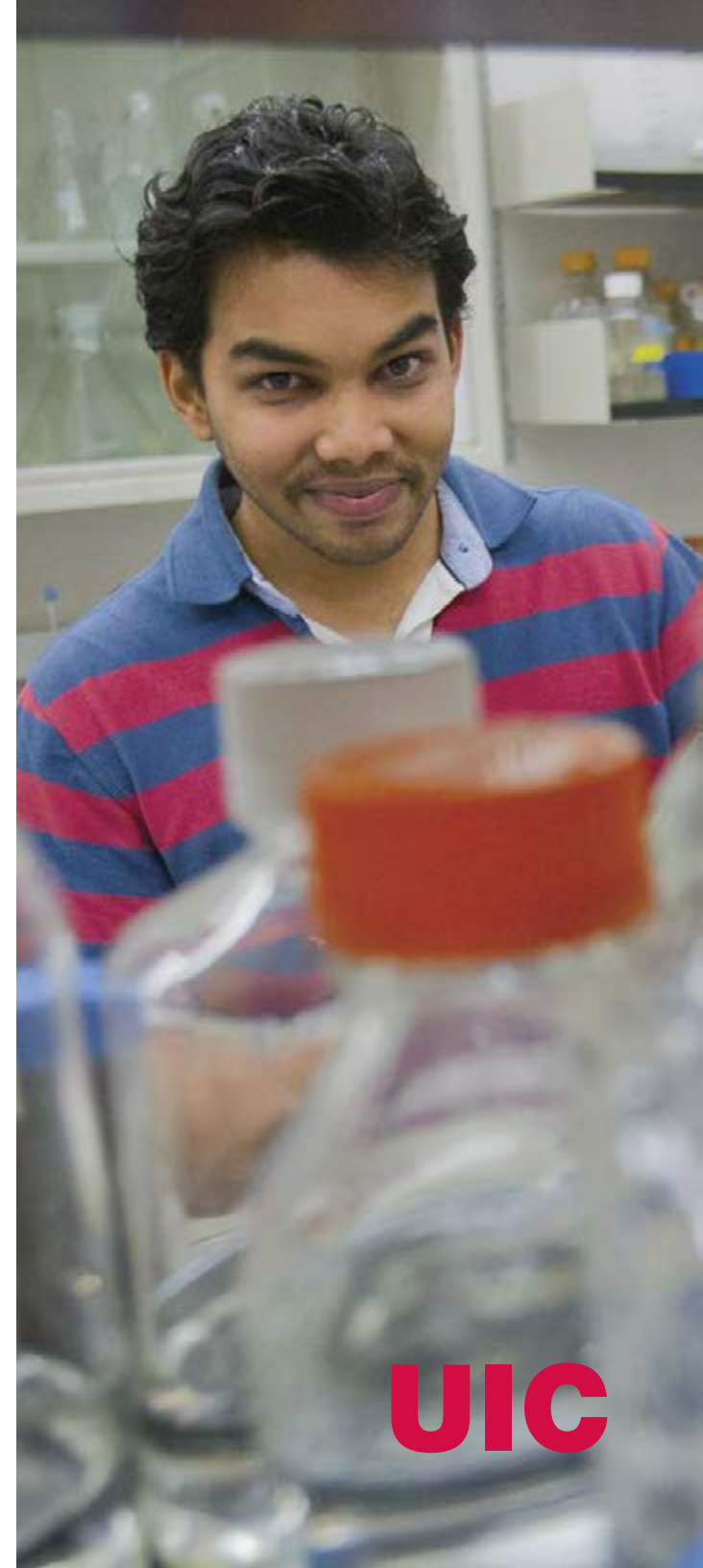
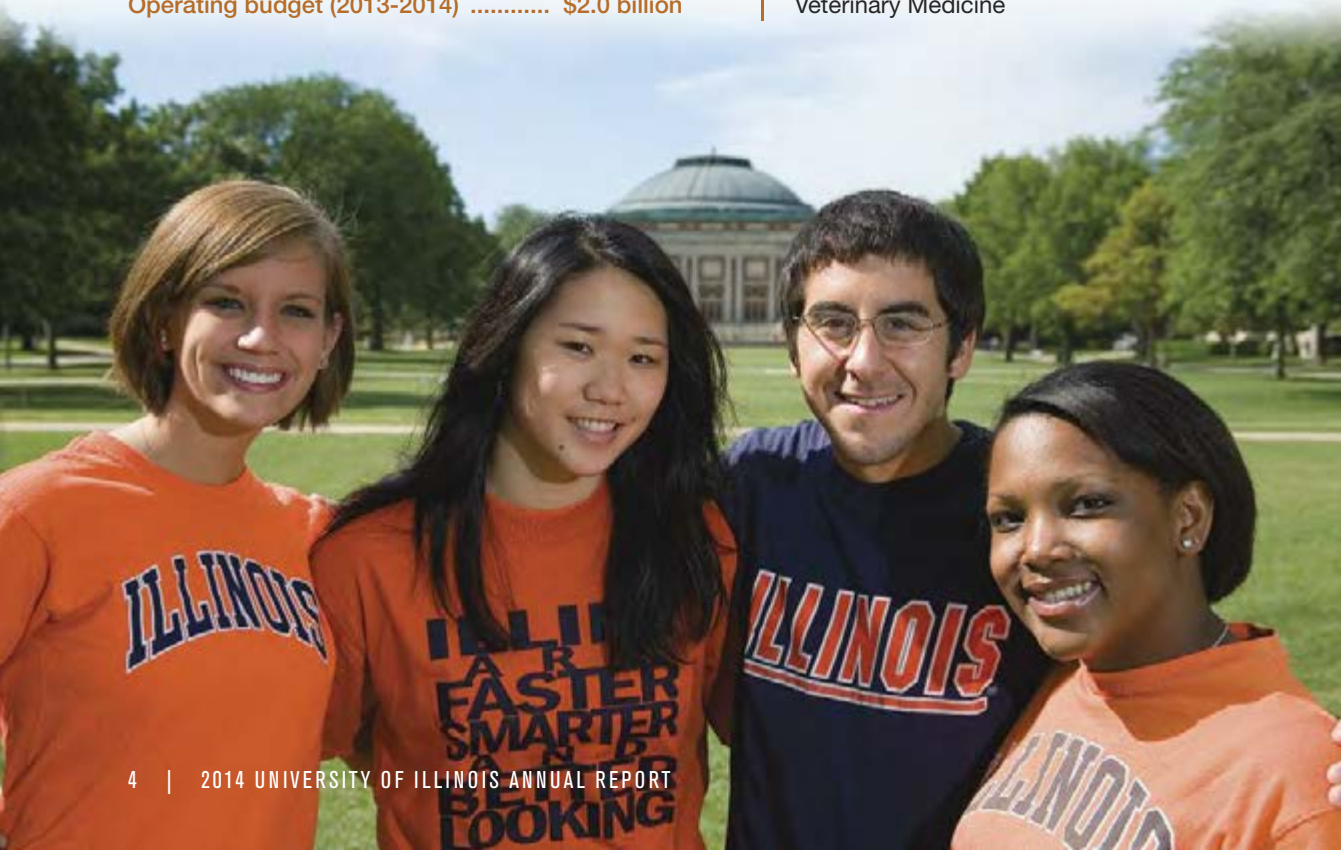
Urbana-Champaign

illinois.edu

Established in 1867, the University of Illinois at Urbana-Champaign is a world leader in research, teaching, and public engagement. Illinois has tremendous breadth and depth in academics, with more than 150 undergraduate and more than 100 graduate and professional programs. A preeminent faculty propels many academic programs to be ranked among the best in the world. This emphasis on campus-wide academic excellence has built Illinois' reputation as one of the nation's premier public universities.

Total enrollment (Fall 2013)44,942
Degrees awarded (2012-2013)12,038
Operating budget (2013-2014) \$2.0 billion

- Agricultural, Consumer and Environmental Sciences
- Applied Health Sciences
- Institute of Aviation
- Business
- Education
- Engineering
- Fine + Applied Arts
- Graduate College
- School of Labor and Employment Relations
- Law
- Liberal Arts and Sciences
- Graduate School of Library and Information Science
- Media
- School of Social Work
- Veterinary Medicine



UIC

Chicago

www.uic.edu

The University of Illinois at Chicago is a major research university in the heart of a global city. Chicago's largest university is also one of the nation's most diverse. Students benefit from an elite faculty and their ties to Chicago's corporate, civic, and cultural institutions. UIC is the state's principal educator of health professionals; its 15 colleges include the nation's largest college of medicine and six other health science colleges. Research, teaching, and service are aimed at reducing disparities in health and economic opportunity.

- Applied Health Sciences
- Architecture and the Arts
- Business Administration
- Dentistry
- Education
- Engineering
- Graduate College
- Honors College
- Liberal Arts and Sciences
- Medicine
- Nursing
- Pharmacy
- Public Health
- Social Work
- Urban Planning and Public Affairs

Total enrollment (Fall 2013).....28,038
Degrees awarded (2012-2013)7,022
Operating budget (2013-2014) \$2.08 billion



Springfield

www.uis.edu

The University of Illinois at Springfield, located in the state capital, emphasizes a strong liberal arts core, engagement in public affairs, and community outreach. The campus has more than 40 degree-granting programs and is a recognized leader in online education. UIS pairs academic excellence with small class and substantial student-faculty interaction. With high-quality programs and internships in public affairs, journalism, and government, UIS offers a unique educational experience.

- Business and Management
- Education and Human Services
- Liberal Arts and Sciences
- Public Affairs and Administration

Total enrollment (Fall 2013)5,137
Degrees awarded (2012-2013)1,358
Operating budget (2013-2014) \$84.9 million





The University is known for academic excellence, with award-winning teachers and scores of undergraduate and graduate programs that are consistently ranked among the best in the world.

ACADEMICS

Flying high

Graduate school doesn't get any better than this.

Suman Sinha Ray, a postdoctoral fellow and recent UIC graduate, and his brother, Sumit Sinha Ray, a graduate student, conducted experiments in 2013 in a Novespace & European Space Agency plane while floating weightless. Under the direction of Alexander Yarin, UIC professor of mechanical and industrial engineering, the brothers went aloft and braved high- and zero-gravity to test a cooling system Yarin's team developed for hot-running microelectronics.

Satellites, rockets, and drones have elaborate electro-optical and infrared sensors, recording equipment, and data processing systems that generate heat and can burn out. Yarin and his group have developed novel nano-textured surfaces that dramatically increase cooling efficiency. They were interested in learning how well the evaporative cooling system they developed would work under conditions of twice-normal or zero gravity.

The three flights were physically demanding but "exciting and fun," said Suman, who worked on the computer running the experiment. Sumit photographed the action and monitored the pressurized rigging running the system.

The research was sponsored by NASA and in collaboration with a German university.

20,418
DEGREES
AWARDED
(2012-2013)

Exchange offers double benefits

The UIC College of Dentistry is conducting four-week educational exchanges with two dental schools in China, giving fourth year students an opportunity to learn about the differences in clinical care, medical education, and culture at the institutions. Christine Wu, professor of pediatric dentistry, says that in China, dentistry is not just about the mouth, it's about the whole head. Chinese dentists have patients who have oral cancer, tumors of the face, and need facial reconstruction. Chinese faculty, who first visited the college in 2012, will return to UIC for a more extended stay soon. They will learn about the U.S. educational system for dentistry and about the curriculum.



l-r: Professors Geoffrey Herman, José Mestre, Jonathan Tomkin, Matthew West, and Jennifer Greene.

Models for STEM courses

A multidisciplinary Urbana team is studying the implementation of education reform in gateway science, technology, engineering and math (STEM) courses across 10 academic units in three colleges to develop a transferable sustainable model for implementing STEM education reform. Each unit will form a “community of practice” to introduce evidence-based pedagogies that will improve student recruitment, retention, and diversity in STEM majors. Physicist and educational psychologist José Mestre, principal investigator on the \$2 million, NSF-sponsored study, says the communities are taking evidence-based reforms and looking at how each can effectively be implemented in an institutional setting. The project has implications for STEM education reform at institutes of higher education across the U.S.

TEN
ACADEMIC
UNITS AND
THREE
COLLEGES



Enhancing cyber training

UIS' computer science department is collaborating with a next generation cyber-security firm to improve its cyber test range used for student training and faculty research. Global Velocity, a Missouri-based data loss prevention technologies firm, donated two of its “deep packet inspection” platforms to UIS. These platforms are based on specially programmed hardware called field-programmable gate arrays that have capabilities far beyond normal firewalls. The cyber range can also be used to simulate macroeconomic activity. UIS offers a BS and MS in computer science and its curriculum meets the national training standard for information systems security professionals and system administrators.

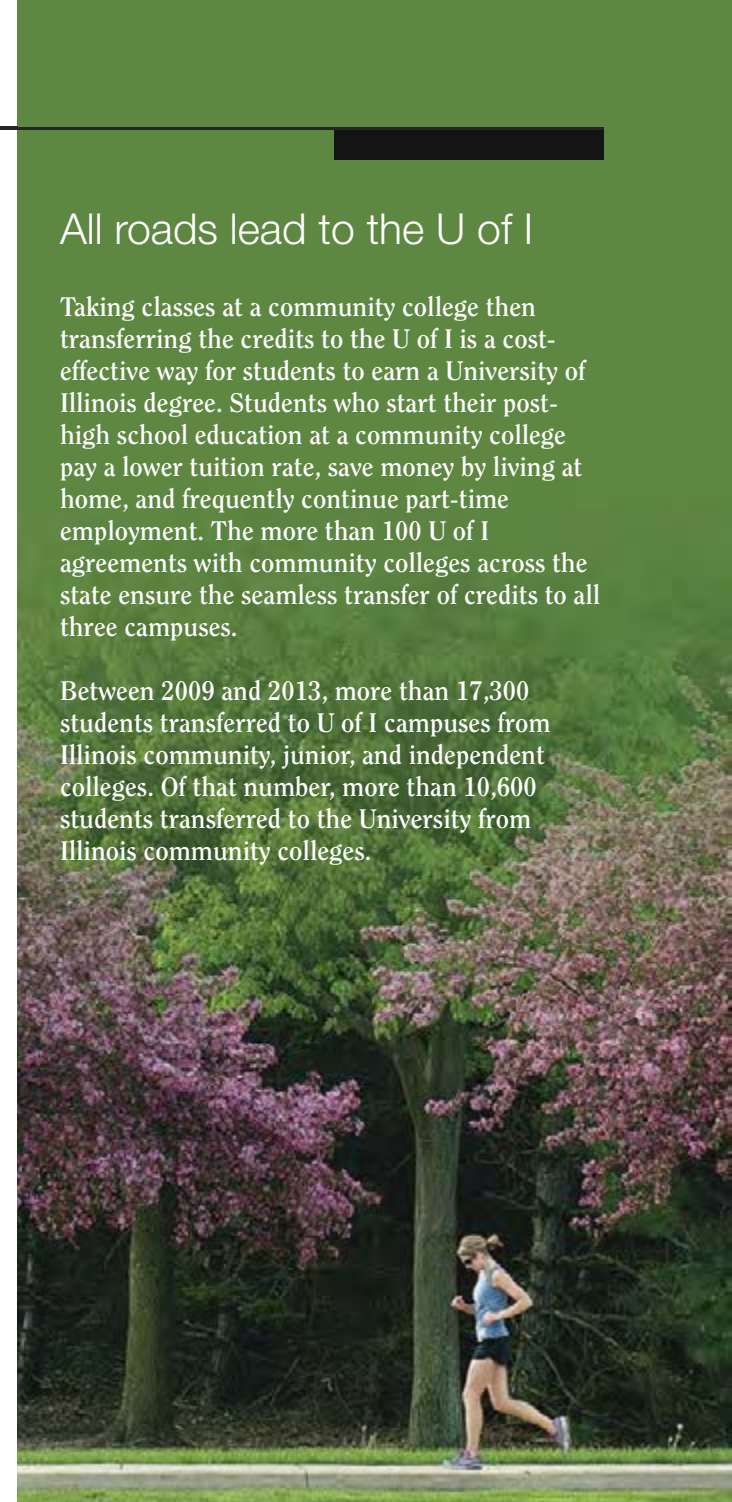




All roads lead to the U of I

Taking classes at a community college then transferring the credits to the U of I is a cost-effective way for students to earn a University of Illinois degree. Students who start their post-high school education at a community college pay a lower tuition rate, save money by living at home, and frequently continue part-time employment. The more than 100 U of I agreements with community colleges across the state ensure the seamless transfer of credits to all three campuses.

Between 2009 and 2013, more than 17,300 students transferred to U of I campuses from Illinois community, junior, and independent colleges. Of that number, more than 10,600 students transferred to the University from Illinois community colleges.



Applying literary craft to shape stories

An Urbana campus literary journalism course is a hands-on exercise in learning to hone a collection of facts and observations about someone into a profile that connects with readers. Students had to locate someone in the community willing to be interviewed and shadowed, pitch their story ideas to the class, and spend time – a lot of time – with their chosen subjects. The next step was the hardest as the students looked for what Professor Walt Harrington calls “universal resonance,” what the story is really about. Students said the class taught them to be better interviewers and more compassionate reporters and to think more deeply about any story they write. The stories were published in *The News-Gazette* and in a book “Slices of Life.”



The University of Illinois has a rich legacy of discovery with world-class faculty who conduct research in areas ranging from the social sciences and humanities to engineering and business to agriculture.

(l-r) Graduate student Tatiana Garcia and professor Marcelo Garcia (no relation) developed FluEgg.

RESEARCH



\$857
MILLION
IN FEDERAL
RESEARCH
FUNDING
(2013-2014)

Carp egg model helps natural resource managers

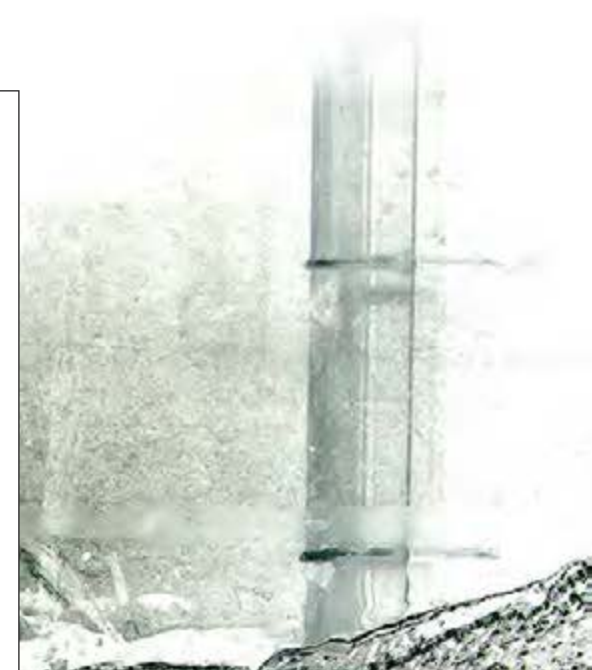
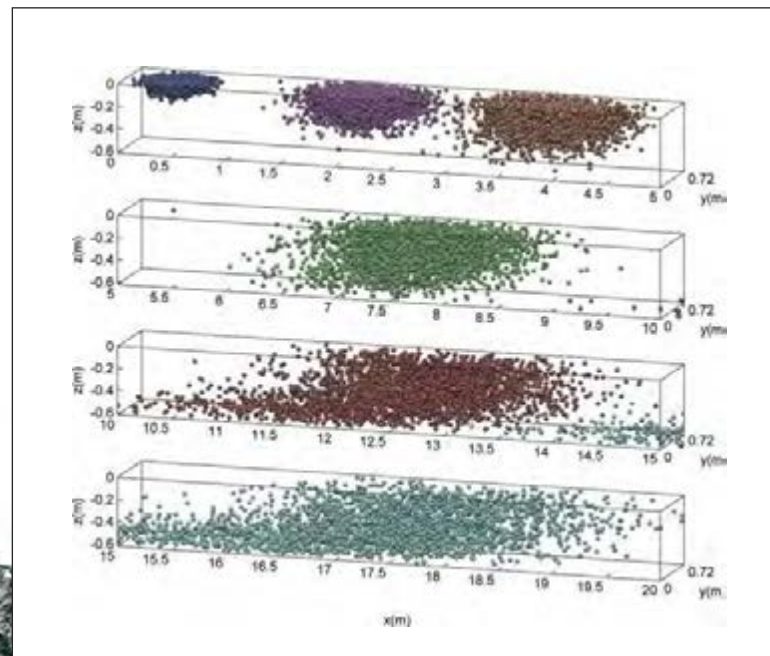
Resource managers have a new tool to help prevent the spread of Asian carp toward the Great Lakes. FluEgg, developed by Urbana civil and environmental engineering professor Marcelo Garcia and graduate student Tatiana Garcia, is the first computer model to take into account the detailed hydrodynamics of a river or stream – temperature, flow velocity, and turbulence – as well as biologic data reflecting the development and change in size and density of carp eggs.

Carp spawn in turbulent waters found near dams and spillways. To establish a large population in the Great Lakes, the carp would have to leave the lakes to spawn in the tributaries where the water moves rapidly. The eggs have to stay suspended in the current to hatch.

The FluEgg model helped USGS researchers, co-developers of the tool, learn that the Sandusky River in Ohio can support spawning and egg development

to hatching. This unexpected finding showed the team that more Great Lakes tributaries could serve as spawning grounds than previously thought.

The information provided by FluEgg could help resource managers implement control measures for the invasive Asian carp. Next steps include using FluEgg to evaluate more tributaries and performing experiments with artificial eggs to continue to fine-tune the model.





Putting soybean knowledge to work for African nations

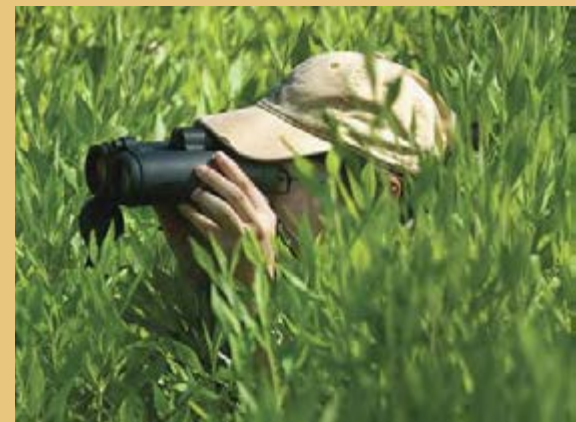
\$25
MILLION
RESEARCH
PROJECT

The College of Agricultural, Consumer and Environmental Sciences on the Urbana campus is launching a \$25 million research project designed to increase the food supply in five sub-Saharan African countries by improving soybean yields. Agricultural economist Peter Goldsmith is leading the consortium of universities and non-governmental organizations that will seek answers to questions about soy in the protein-deficient countries including selecting the best seeds for the area and climate, environmental sustainability, establishing markets, and the value chain connecting growers and processors. Feed the Future Innovation Laboratory for Soybean Value Chain Research is funded by the U.S. Agency for International Development.



New home for endangered osprey

Five osprey chicks from Langley Air Force Base in Virginia learned to call central Illinois home last summer, the first step in an eight-year program to re-establish nesting ospreys in the state. Graduate students working with UIS Professor Tih-Fen Ting are feeding, observing, and tending to the chicks in collaboration with the Illinois Department of Natural Resources. The hope is that the fish-eating birds of prey will, as adults, return to nest in the area where they were raised. The students cared for the chicks until they were ready to fly and outfitted each with a radio transmitter to track their movements.





Rome Prize winner eyes optical illusions

Thomas Kelley, who teaches a UIC studio class called “Exactly Wrong,” has made a study of visual errors, the architect’s use of mathematically precise optical devices, such as forced perspective, juxtapositions of scale, or trompe l’oeil painting, that cause viewers to look twice. Kelley is spending the 2013-14 academic year studying such errors in the Eternal City as a

recipient of the Rome Prize from the American Academy in Rome. One of Kelley’s favorite works of forced perspective, the Palazzo Spada, has a corridor with a rising floor and diminishing columns, making it appear to be nearly five times its actual length. A child-sized statue at the end of the corridor appears to be adult-sized when viewed from the entrance.



Club Red

The same government that threw its citizens into labor camps also gave them vacations and places to spend them, some of them lavish, says Urbana campus history professor Diane Koenker in her book “Club Red: Vacation Travel and the Soviet Dream.” Koenker’s research revealed a regime that viewed vacation as part of the good life under communism. Seen as a time to recover from the toils of labor, vacations emphasized rest and medically supervised treatments such as sunbathing for individual workers, but not their families. The Black Sea coast city Sochi, host of the 2014 Winter Olympics, is the focus of Koenker’s book, published in 2013 by Cornell University Press.



HEALTH CARE



Home to the nation's largest College of Medicine, the University of Illinois educates physicians, nurses, dentists, pharmacists, and other health professionals and, at the U of I hospital and clinics across Chicago, addresses health care disparities for underserved populations.

Newest addition to UI Health's family

The highly anticipated new Mile Square Health Center opened its doors to patients in early January. The newest addition to the Mile Square family of health care resource sites – located around the city and in Cicero – serves as a medical neighborhood for many residents in the areas adjacent to Roosevelt Road and Wood Street, creating a healthier community for a healthier city. The building provides primary care as well as specialty care services, positioning Mile Square Health Center as a 21st century model for community health care.

The first-floor Urgent Care Center serves as an after-hours alternative to the ER for non-emergencies and is a partnership between Mile Square Health Center and the UI Hospital Emergency Department. Other services include primary care practices and specialists, a pharmacy, lab testing, and mammography services. Dental care and community-based research and education are planned for upper floors.

UI Health's Mile Square Health Center is the oldest community health center in Chicago and has been providing health care to residents for over 40 years. The new, five-story, 120,000 square foot state-of-the-art facility is Mile Square's primary practice site, replacing the old facility located at 2045 W. Washington Boulevard. In addition to serving as a federally qualified health center with an expanded care delivery model, the Mile Square Health Center represents UI Health's commitment to health equity in the communities it serves.

75,000
PATIENT
VISITS
(ALL MILE SQUARE
SITES, TOTAL FOR 2014)



UI Health reaches out to newly eligible

Health care delivery entered a new era in 2014 when the Affordable Care Act (ACA) became law. Individuals previously without insurance became eligible for health care coverage through Medicaid expansion or by purchasing private insurance through the health insurance marketplace. In the communities surrounding UI Health facilities, nearly 200,000 individuals are expected to be eligible for either Medicaid or the marketplace.

UI Health assembled a core team to drive the development and execution of an ACA strategy designed to showcase the resources of UI Health and attract these individuals as patients. The team's work included internal and external communications, as well as marketing efforts that aligned with a patient acquisition and retention focus.



Chicago-area health care navigators trained by UIC

When the enrollment period for the Affordable Care Act began in October 2013, navigators, in-person counselors, and certified application counselors engaged and educated people in their communities and enrolled them for coverage using the health insurance marketplace. Elizabeth Calhoun, professor of health policy and administration, joined other UIC HPA faculty and key community partners to develop the two-day immersive course – the Illinois Assister Training program – used to train the paid guides. The required training uses online modules and two-day in-person trainings held at UIC and around the state for the Illinois Department of Insurance certification. The navigators-in-training ranged in age from recent college graduates to seniors and with high school diplomas through graduate degrees. The training is sensitive to the varied health-care experience among organizations and to engaging hard to reach communities.



UNISON Health survey

In November 2013, the Population Health Sciences Program launched the University of Illinois Survey on Neighborhood Health (UNISON Health), an in-person health needs assessment in 24 of the communities served by UI Health. Conducted by UIC's Survey Research Laboratory, UNISON Health will collect information from 1,400 local residents on health-related behaviors, health-care access and utilization, prevalence of conditions, quality of life indicators, and knowledge of the Affordable Care Act (ACA).

UNISON Health also includes free health screenings (weight, vision, blood pressure, cholesterol, diabetes) and provides information about the ACA and assistance

UNIVERSITY OF ILLINOIS HOSPITAL & HEALTH SCIENCES SYSTEM
UNISON Health Area



obtaining health insurance through the exchange.

UNISON Health data will be utilized to efficiently target UI Health's efforts and resources to improve health care in the community. Survey results are expected in summer 2014.



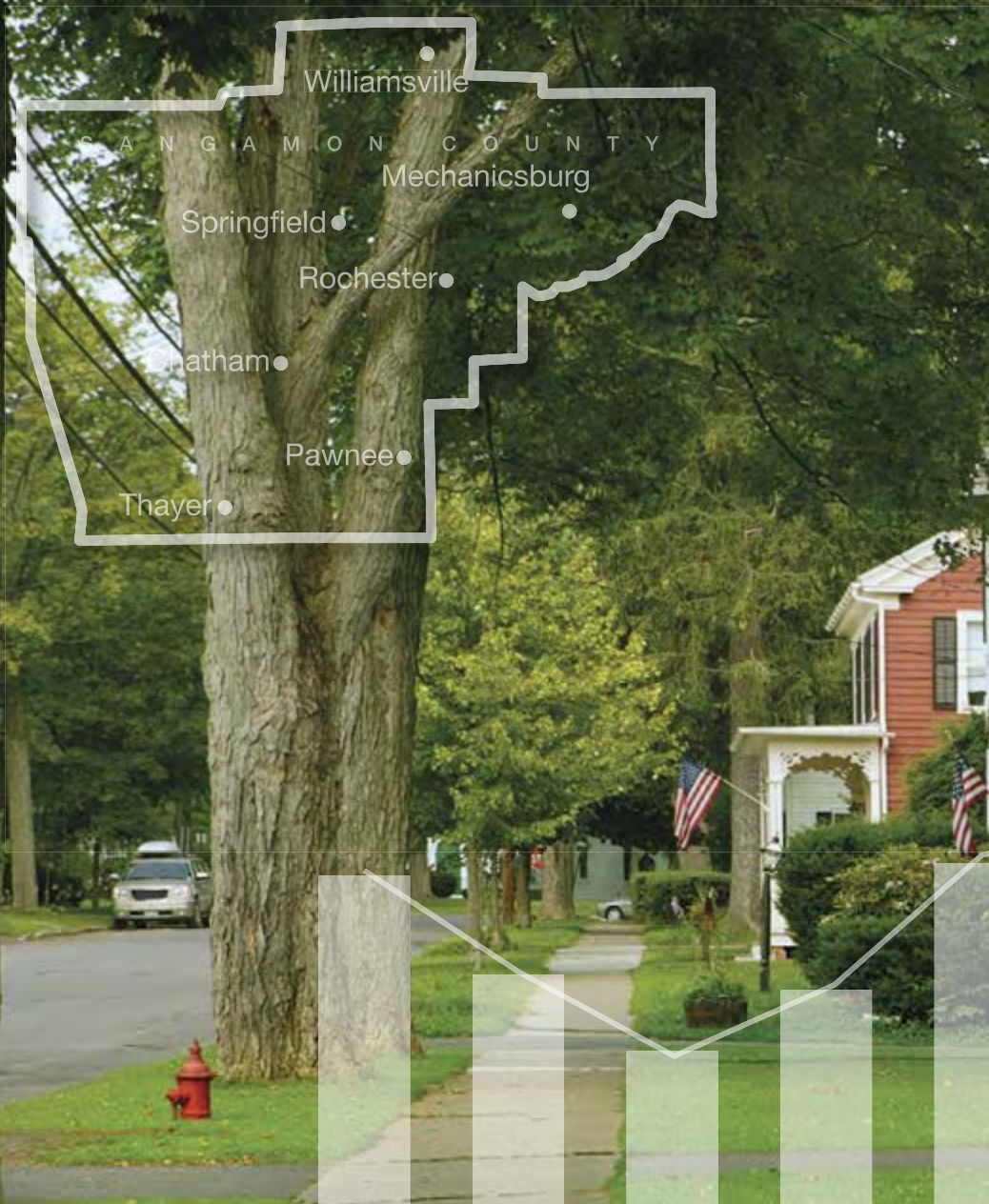
First graduates of Rockford pharmacy program

This spring, the UIC College of Pharmacy regional campus in Rockford will graduate its first class since the program was established in 2010. All four years of pharmacy school instruction are provided on the Rockford campus: core classes are taught via distance education while laboratory and recitations sessions, as well as many electives, are taught locally. Fourth-year core clinical rotations are completed in Rockford and surrounding hospitals, health systems, and pharmacies.

Select students with rural backgrounds are admitted to the Rural Pharmacy Program (RPharm) each year. They receive training and mentorship focusing on the health care needs of rural communities. The RPharm students train collaboratively with medical students from the University of Illinois College of Medicine at Rockford Rural Medicine (RMED) program to prepare to meet the health care needs of rural communities.

Thirty-five students will graduate with a PharmD degree in May 2014.





The University of Illinois celebrates its land-grant public service mission by offering programs and activities around the state, from Chicago to Cairo, Danville to Quincy, and beyond.

PUBLIC SERVICE

600+
ILLINOIS
PUBLIC SERVICE
PROGRAMS

Survey services help community

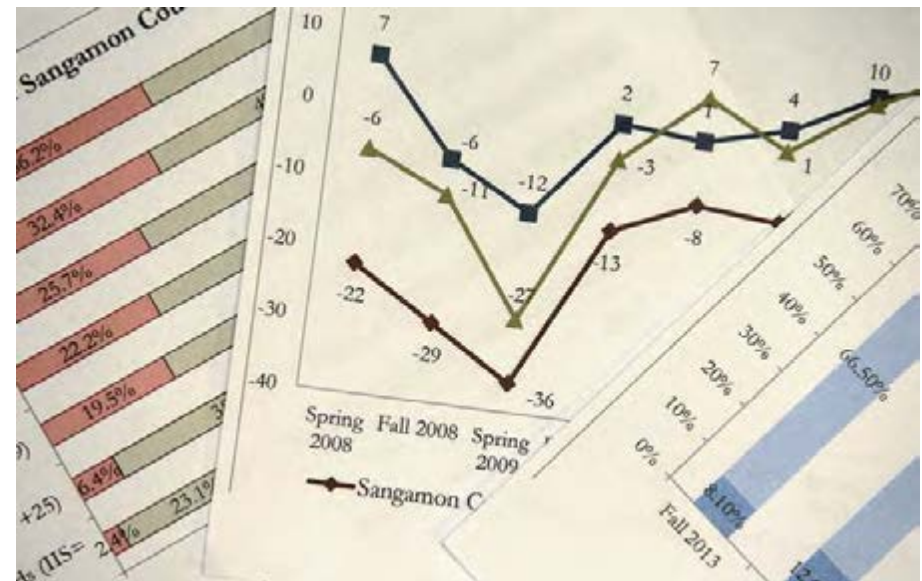
Surveys provide snapshots of attitudes and opinions. Repeating a survey offers an opportunity to discover trends and changes over time. The UIS Survey Research Office partners with Sangamon County agencies on surveys that are designed to help citizens, policy makers, and community leaders learn about community concerns and make informed decisions.

The first formal survey measuring quality of life issues in Sangamon County was conducted in early 2013 by the Survey Research Office, the Community Foundation for the Land of Lincoln, and the United Way of Central Illinois. Designed as an information resource for citizens and community leaders, the survey results covered nine different indicators including culture and recreation, health, economy, education, government and civic participation, and environment.

The Survey Research Office also collaborated with the Greater Springfield Chamber of Commerce in the fall of 2013 for the fifth Sangamon County economic outlook survey. The results of the longitudinal economic survey conducted biannually are used by

local business leaders, government officials, and area residents to understand the Springfield area economy and to gauge the short-term future.

The Survey Research Office, part of the UIS Center for State Policy and Leadership, specializes in public affairs research with a goal of advancing scholarly and practical research.





Veterans2Ventures supports entrepreneurial veterans

UIC's College of Business Administration launched a new University-based entrepreneurship program to foster and support veterans returning to the Chicago area who want to lead new or existing business ventures. The program provides veterans with the knowledge and skills needed to identify and evaluate a range of entrepreneurial opportunities and with the tools to become a successful entrepreneur. The program emphasizes practical applications and includes visits to Chicago-area companies, meetings with local entrepreneurs, and introductions to Chicago resources. Veterans2Ventures is free for veterans accepted into the non-degree, certificate program, which will officially launch in fall 2014 following a pilot program this spring.



Artificial intelligence lab zeros in on traffic snarls

SPANNING THE
I-94
CORRIDOR

In Chicago, delays due to congestion cost \$6.2 billion a year in wasted fuel, time, and increased pollution, making it the nation's No. 1 city in yearly costs to commuters. A one percent improvement in traffic flow could translate into millions of dollars in savings, notes John Dillenburg, associate director of UIC's Artificial Intelligence Laboratory.

In 2013, the AI Lab received a \$2.9 million research contract from the Illinois Department of Transportation (IDOT) to continue its research, development, and operation of a real-time traffic information service, the Gateway Traveler Information System. With the IDOT funding, the system will expand coverage to the entire I-94 corridor from Minneapolis to Detroit, as well as the rest of Illinois. Information displayed includes travel times, congestion, construction, incidents, dynamic message signs, and cameras. The AI Lab has collaborated with IDOT since 1991.





Abused women often fear for pets left behind

Veterinarians and women's shelters can make it easier for abused women to decide to leave their homes, particularly when the abuser is using a beloved pet as part of a campaign to control his partner, according to a study by Jennifer Hardesty, an Urbana professor of human development and family studies. Hardesty notes that protecting a pet empowers abused women.

Currently, only a few shelters welcome pets. The Urbana College of Veterinary Medicine is pioneering a program that provides a safe haven for pets until women in shelters can find housing and reclaim their animals. The program provides up to 30 days of care for pets of women staying at two Champaign-Urbana women's shelters.



It's better than a night at the museum...

Because it is a *week* at the museum. Each year, the Urbana campus' Krannert Art Museum hosts hundreds of elementary students who participate in interdisciplinary, arts-infused classes for an entire week in a program called KAM-WAM (Krannert Art Museum-Week at the Museum). Held throughout the museum's galleries, KAM-WAM interactive lessons are collaboratively taught by district art, music, and classroom teachers and KAM educators. Students explore the meaning of art and identity while looking, learning, and interpreting artworks from around the globe. KAM-WAM is a joint project between the College of Fine + Applied Arts and the College of Education's Center for Education in Small Urban Communities.

ECONOMIC DEVELOPMENT

DIGITAL LAB FOR MANUFACTURING

8 UNIVERSITIES

24 CORPORATE PARTNERS

16 CIVIC & GOVERNMENT

15 COMMUNITY COLLEGES



30+ ACADEMIC PARTNERS
(INCLUDING 6 OF THE TOP 20 U.S. ENGINEERING SCHOOLS)



300+ SUPPORTING ORGANIZATIONS ACROSS 17 STATES



40+ INDUSTRY PARTNERS
(INCLUDING THE MOST COMPETITIVE MANUFACTURING COMPANIES IN THE WORLD)



180+ SMALL & MEDIUM-SIZED MANUFACTURERS



The University of Illinois is a key contributor to the state's economy, from public-private partnerships and award winning research parks to start-up companies based on University research and ideas.

Digital Lab for Manufacturing

The University of Illinois and UI LABS – a research, training and commercialization center in Chicago that brings together universities, industry, and government – are leading a consortium that was awarded \$70 million by the U.S. Department of Defense (DoD) to create the Digital Lab for Manufacturing, a digital manufacturing and design innovation institute. DLM is part of the federal government's effort to create a national network of manufacturing innovation.

The award announcement was made at the White House in late February by President Obama with University leaders present.

Once fully built, the Digital Lab will be a world-class, first-of-its-kind manufacturing hub with the capabilities, expertise, and network to tackle complex manufacturing challenges, de-risk adoption of new technologies by companies, and improve the nation's overall manufacturing competitiveness. The Lab will unlock the full potential of the digital manufacturing revolution, maximizing connections, and implementing innovations.

The consortium represents 40 industry partners with more than \$500 billion in manufacturing output, more than 30 academic partners including six of the top twenty leading engineering universities, and over 500 supporting companies, manufacturing associations, and workforce development organizations across 17 states. With DoD funding and cost-share contributions by university and industry partners, the total support for the Digital Lab for Manufacturing exceeds \$320 million over five years.



King



Nowinski

\$320
MILLION
OVER FIVE YEARS

William King, a professor of mechanical engineering at the U of I in Urbana-Champaign, will serve as DLM's chief technology officer. An early initiative will turn supply-chain proprietary software from General Electric into open-source software. DLM focus areas will include virtual prototyping on NCSA's iForge and Blue Waters supercomputers, developing software to create a virtual supply chain of vendors and customers, and creating smart factories with wireless sensors.

Digital manufacturing is the next industrial revolution and is expected to create jobs, grow the economy, and dramatically increase the competitiveness of American companies. DLM partners believe that the future of manufacturing is "made in America." The lab's mission is to lead this revolution, leveraging the region's strong and diverse manufacturing base and unique applied research strengths, said Caralynn Nowinski, interim executive director and a U of I associate vice president.

UI LABS
digitallab.uilabs.org



Central Illinois economic development

The University of Illinois Research Park (UIRP), located on the Urbana campus, provides millions of dollars in tax revenues to the state of Illinois and Champaign County through its infrastructure investment and operational impact. UIRP is larger in terms of acreage, number of buildings, tenants, and employees than

160
ACRES
IMPROVED

other research parks in the U.S. Employment growth in 2013 has been aided by new research operations of AB InBev, Turn, Axis Insurance, and Akuna Capital. New roads, sidewalks, fiber, and landscaping improvements were made to allow the Research Park to grow an additional 160 acres, resulting in new tenants and job creation. Internet giant Yahoo! broke ground in February 2014 on its new UIRP building.



Chicago economic development

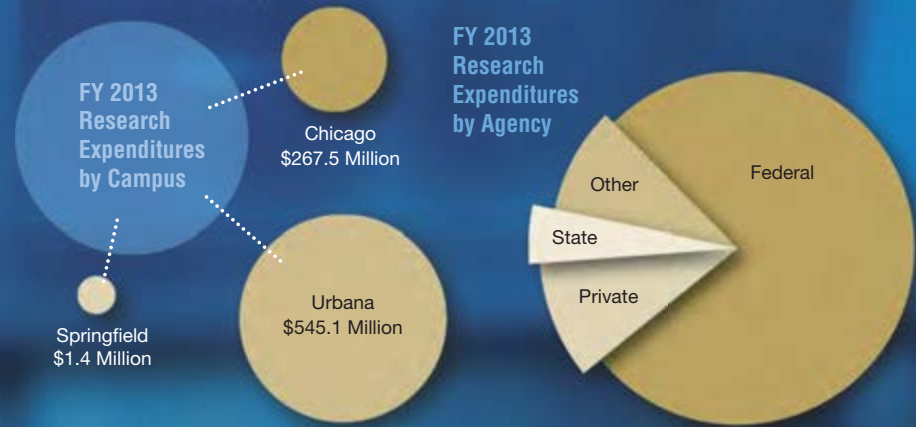
The Illinois Department of Commerce and Economic Opportunity and the U of I joined forces to create the Health, Technology, Innovation (HTI) business incubator in the Illinois Medical District, near the UIC campus. HTI, which opened in January 2014, provides the infrastructure for health-care and technology startups to accelerate project-to-venture readiness.

UIC is a leader in jumpstarting companies. A report released by The Science Coalition in late 2013 highlighted 100 economically impactful companies that were created as a result of federally funded university-based research. Seven of the companies started on the UIC campus.

(l-r) Vice President for Research Lawrence Schook, Governor Pat Quinn, G. Steven Burrill, CEO of Burrill & Company, and U of I President Robert Easter.

Examining research administration processes

U of I researchers continue to attract grants and contracts ranging from tens of thousands of dollars to multi-million dollar projects. In an effort to improve services and achieve greater productivity and efficiency, the University reviewed the full scope of research administration processes including pre- and post-award practices. A task force of faculty and research administrators from the Chicago and Urbana campuses conducted interviews with researchers and departmental business staff on to determine the challenges associated with research administration. The task force identified opportunities to streamline processes, enhance collaboration across campuses, and reduce the administrative burden on researchers.



State outreach

In 2013, the University of Illinois aggressively pursued new opportunities to partner with government, industry, and other academic institutions across the state to promote regional economic development. U of I joined Western Illinois University and the Quad Cities Manufacturing Lab in forming a strategic partnership to grow the Quad Cities economy. Partnering with Rep. Cheri Bustos and the Illinois Department of Commerce and Economic Opportunity, led by Adam Pollet, the U of I co-hosted regional economic workshops with business and community leaders in Peoria, Moline, and Rockford focusing on job creation, workforce development, infrastructure, and small businesses.

In conjunction with Mayor Rahm Emanuel and Chicago Ideas Week, The U of I spearheaded ThinkChicago™, a program aimed at recruiting college students to Chicago after graduation.

(l-r) Western Illinois University President Jack Thomas, Rep. Cheri Bustos, D-Ill, and President Robert Easter.



© LARRY FISHER/QUAD-CITY TIMES/ZUMAPRESS.COM



STUDENT SUPPORT

79%
RECEIVE AID

Supporting college dreams

A college education is the foundation of the American dream, a pathway to a life of opportunity and success.

The faculty and staff at the University of Illinois take pride in transforming lives and educating the next generation of American and global leaders.

In 2012-13, the latest year for which numbers are available, the University provided more than \$1.4 billion in financial aid to more than 61,500 students – 79 percent of total enrollment. The aid comes from many sources including scholarships, grants, fellowships, and tuition and fee waivers, which account for 48 percent of the total. The remainder is from employment and loans.

University-wide programs, such as the President's Award Program, support qualified low-income and underrepresented students from across the state. These awards, recently increased from \$5,000 to \$10,000, are renewable scholarships that assist 1,100 freshmen across the three U of I campuses. Scholarship programs on each campus are another source of support.

Over the last decade, the University has increased funding for need-based financial aid more than fourfold to over \$78 million.

Keeping college affordable

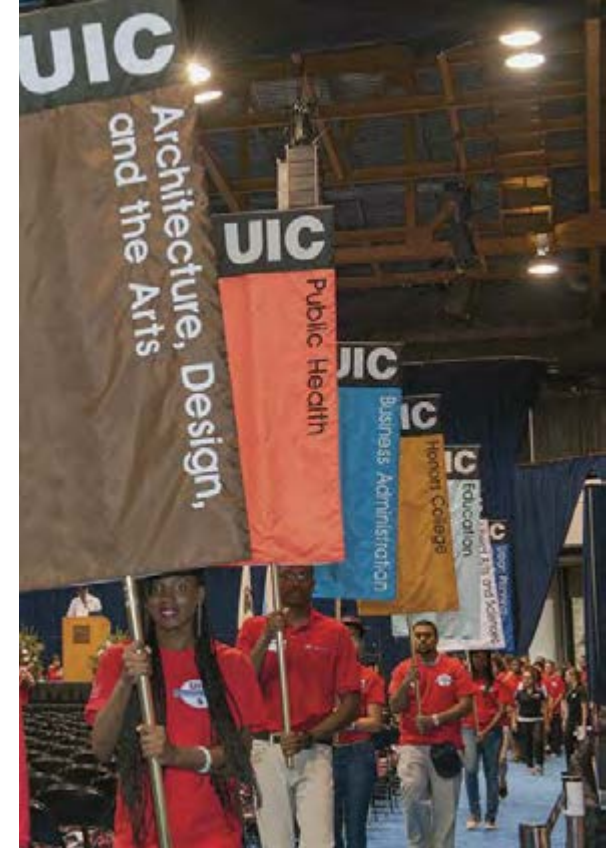
In 2011, the Board of Trustees adopted an inflation-neutral tuition policy that holds growth in tuition to the cost of living or below. The policy assumes no significant reductions in state funding or in other University support. Combined with the state of Illinois guaranteed-tuition law, this policy helps students and their parents by locking in tuition rates for the four years required to complete most undergraduate degree programs.

FINANCIALS

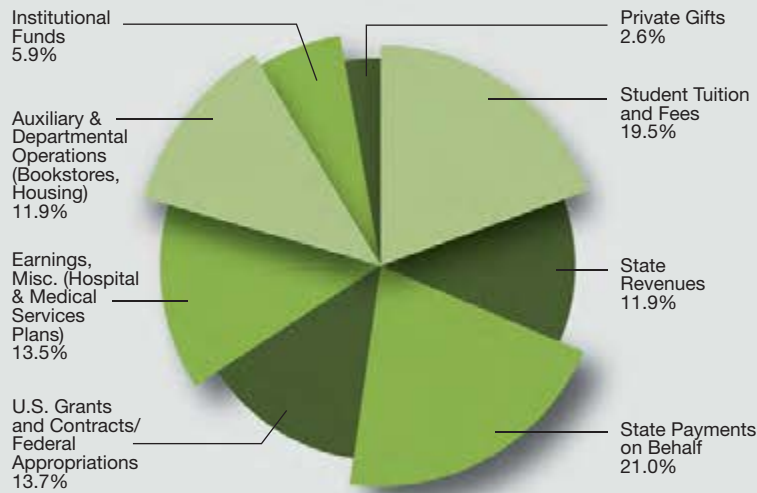
**\$5.63
BILLION
TOTAL
OPERATING
BUDGET**

The total operating budget* for the University of Illinois is \$5.63 billion.

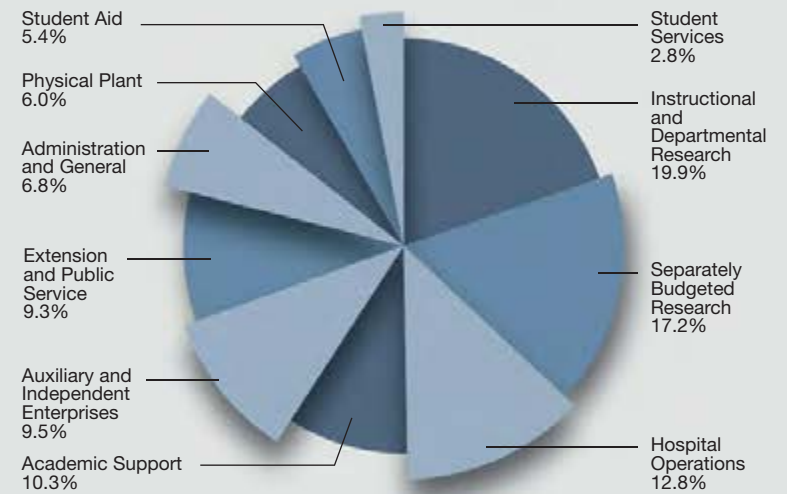
* Includes \$1.18 billion in payments made on behalf of the University for employee benefits and \$35.9 million for the Academic Facilities Maintenance Fund Assessment (AFMFA).



Where does the money come from?



How is the money spent?





Above: The proposed UIS student union will become the heart of the campus. Approved by the Board of Trustees in 2013, the union will be funded by student fees and private giving. Image: Dewberry.

Below: UIS students Natalie Noble and Brandon Snowden record students as part of an assignment for their visual storytelling and reporting course, taught by Professor Ann Strahle. Photo: Shannon O'Brien



Maudelle Tanner Brown Bousfield, the first female African-American graduate of the Urbana-Champaign campus, received a bachelor's degree in 1906. More than a century later, her alma mater named a residence hall in her honor. Bousfield also received a graduate degree from UIC in 1931. Photo: Brian Stauffer.



UIC computer science PhD student and Electronic Visualization Laboratory (EVL) research assistant Victor Mateevitsi is investigating how the use of technologies, such as Google Glass, can expand the capabilities and characteristics of humans and improve and enhance our quality of life. Photo: Lance Long, UIC/EVL.



The Convocation Day celebration at the University of Illinois in Chicago marks new students' entry into the UIC academic community. Photo: UIC Photo Services.



Students in a natural resources and environmental sciences class (NRES 102) spent a day at Allerton Park in central Illinois studying fish, birds, mammals, forests, and water quality. The field day gives the students hands-on experience with techniques and equipment. Photo: Manuel Colon.

IMPACT ILLINOIS 2014

is published by the University of Illinois Office for University Relations. Copyright ©2014 by the University of Illinois Board of Trustees

uillinois.edu/annual-report2014

Executive director: Thomas P. Hardy
Editor: Ginny Hudak-David

WRITERS

Jan Dennis, Ginny Hudak-David

PROOFREADERS

Melanie Kuehn, Jill Weathers

PHOTOGRAPHERS

Roberta Dupuis-Devlin, UIC; Shannon O'Brien, UIS; Brian Stauffer and Ben Woloszyn, Urbana

DESIGN

Deb Eisenmann

PHOTO CREDITS

URBANA

Justine Bursoni; College of Education; Manuel Colon, NRES; Steven Halperson; Institute for Genomic Biology; Krannert Art Museum; Veterinary Medicine

CHICAGO

Joshua Clark; Hoss Fatemi (HHSS); Richard Foertsch, UICOMR; Thomas Kelley; Lance Long, EVL; NASA; Harvey Tillis, Art & Stock Photography

SPRINGFIELD

Flickr

OTHER

Darrell Hoemann; istockphoto; Brittany Metka; Shutterstock; Vice President for Research; Wikimedia Commons, Anthony Majanlahti

COLLABORATORS

University Relations thanks our communications colleagues across the University for their original reporting and assistance in this publication. Special thanks to the reporters in the Urbana News Bureau, UIC News Bureau, and Springfield's Office of Campus Relations as well as staff in the office of the Vice President for Research and the communications team in the University of Illinois Hospital & Health Sciences System.

PRINTING

Premier Print Group
PO #934193

A detailed microscopic image of coral polyps, showing their characteristic circular, overlapping structure. The polyps are illuminated with a combination of green and orange light, highlighting their intricate internal and external features. The background is a soft, out-of-focus green, suggesting a natural underwater environment.

UNIVERSITY OF ILLINOIS

URBANA-CHAMPAIGN • CHICAGO • SPRINGFIELD

Office of the President
364 Henry Administration Building
506 South Wright Street
Urbana, IL 61801-3689

A polyp from a reef building coral is imaged with a Zeiss LSM 710 two photon microscope by researchers Carly Hill Miller, Mayandi Sivaguru, Glenn Fried and Bruce Fouke from the Institute for Genomic Biology in Urbana. Most corals consist of many small polyps living together in a large group. Analyses are used to understand how corals co-evolved with algae to optimize the harvesting of light from seawater. This research could help predict how corals will respond to increasing sea surface temperature and rising sea level associated with global warming.