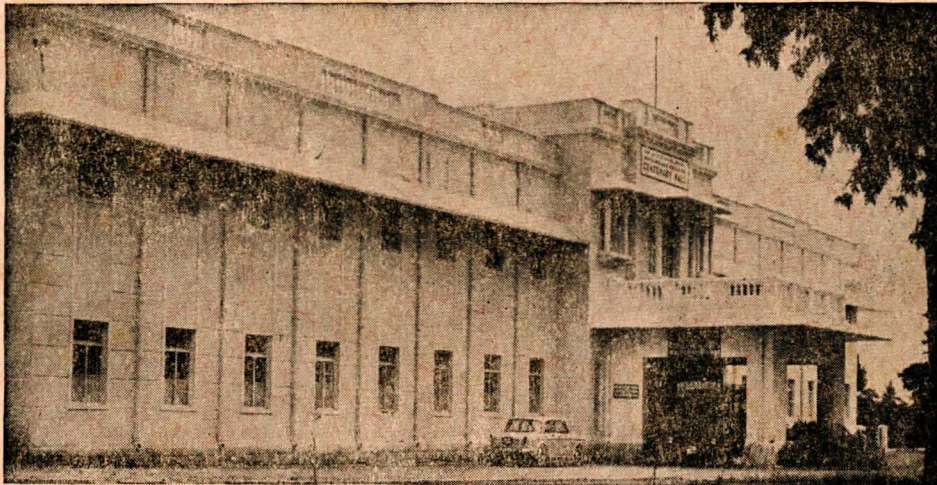


CALENDER

1968-69



**THE ALL INDIA INSTITUTE OF SPEECH AND HEARING
CENTENARY HALL, MYSORE-5**

rams : ' LOGOPEDICS "

Phone : 715 & 1874

THE ALL INDIA INSTITUTE OF SPEECH AND HEARING, MYSORE

C A L E N D A R

1968 - 69

CONTENTS

	<u>PAGE NO</u>
1. The Institute Calendar	1
2. All India Institute of Speech & Hearing:-	
(a) General Council	7
(b) Executive Council	8
(c) Staff members of the Institute.	9
3. <u>Courses offered</u> :-	
(i) M.Sc in Speech and Hearing	11
(ii) B.Sc in Speech and Hearing	12
4. <u>GENERAL</u> :-	
(a) Prospectus for the graduates in the area.	22
(b) Library	23
(c) Clinical service and the Departments.	23
(d) Hostel	27
(e) All India Institute of Speech and Hearing Association.	32
(f) Disciplinary Regulations	35
(g) Railway Travel Concession	38
5. <u>Course outlines</u> :-	
(i) M.Sc Degree.	39
(ii) B.Sc Degree.	64

CALENDER OF THE INSTITUTE

JUNE 1968

1. Saturday
2. Sunday Holiday
3. Monday
4. Tuesday
5. Wednesday
6. Thursday
7. Friday
8. Saturday Holiday
9. Sunday Holiday
10. Monday
11. Tuesday
12. Wednesday
13. Thursday
14. Friday
15. Saturday Institution re-
opens for students
16. Sunday Holiday
17. Monday Tuesday
18. Tuesday
19. Wednesday
20. Thursday
21. Friday
22. Saturday
23. Sunday Holiday
24. Monday
25. Tuesday
26. Wednesday
27. Thursday
28. Friday Monthly tests
29. Saturday
30. Sunday Holiday

July 1968

1. Monday
2. Tuesday
3. Wednesday
4. Thursday
5. Friday
6. Saturday
7. Sunday Holiday
8. Monday
9. Tuesday
10. Wednesday
11. Thursday New Admission
12. Friday
13. Saturday Holiday
14. Sunday Holiday
15. Monday
16. Tuesday
17. Wednesday
18. Thursday
19. Friday
20. Saturday
21. Sunday Holiday
22. Monday
23. Tuesday
24. Wednesday
25. Thursday
26. Friday
27. Saturday
28. Sunday Holiday
29. Monday
30. Tuesday Monthly Tests
31. Wednesday

AUGUST 1968

1.	Thursday	
2.	Friday	
3.	Saturday	
4.	Sunday	Holiday
5.	Monday	
6.	Tuesday	
7.	Wednesday	
8.	Thursday	
9.	Friday	
10.	Saturday	Holiday
11.	Sunday	Holiday
12.	Monday	
13.	Tuesday	
14.	Wednesday	
15.	Thursday	Independence Day
16.	Friday	
17.	Saturday	
18.	Sunday	Holiday
19.	Monday	
20.	Tuesday	
21.	Wednesday	
22.	Thursday	
23.	Friday	
24.	Saturday	
25.	Sunday	Holiday
26.	Monday	Holiday for students only
27.	Tuesday	Ganesha Chaturthi
28.	Wednesday	
29.	Thursday	Monthly tests.
30.	Friday	
31.	Saturday	

SEPTEMBER 1968

1.	Sunday	Holiday
2.	Monday	
3.	Tuesday	
4.	Wednesday	
5.	Thursday	
6.	Friday	
7.	Saturday	
8.	Sunday	Holiday
9.	Monday	
10.	Tuesday	
11.	Wednesday	
12.	Thursday	
13.	Friday	
14.	Saturday	Holiday
15.	Sunday	Holiday
16.	Monday	
17.	Tuesday	
18.	Wednesday	
19.	Thursday	
20.	Friday	
21.	Saturday	
22.	Sunday	Holiday
23.	Monday	Final Uni. Exam. for M.Sc student
24.	Tuesday	
25.	Wednesday	
26.	Thursday	
27.	Friday	Monthly tests
28.	Saturday	
29.	Sunday	Holiday
30.	Monday	Dussera (Ayudha Pooja)

OCTOBER 1968

1. Tuesday Vijayadasami
2. Wednesday Gandhi Jayanthi
3. Thursday
4. Friday
5. Saturday
6. Sunday Holiday
7. Monday
8. Tuesday
9. Wednesday
10. Thursday
11. Friday
12. Saturday Holiday
13. Sunday Holiday
14. Monday
15. Tuesday
16. Wednesday Mid-term vacation for students for one month
17. Thursday
18. Friday
19. Saturday
20. Sunday Holiday
21. Monday Deepavali
22. Tuesday
23. Wednesday
24. Thursday
25. Friday
26. Saturday
27. Sunday Holiday
28. Monday
29. Tuesday
30. Wednesday
31. Thursday

NOVEMBER 1968

1. Friday
2. Saturday
3. Sunday Holiday
4. Monday
5. Tuesday
6. Wednesday
7. Thursday
8. Friday
9. Saturday Holiday
10. Sunday Holiday
11. Monday
12. Tuesday
13. Wednesday
14. Thursday
15. Friday Institute reopens for students
16. Saturday
17. Sunday Holiday
18. Monday
19. Tuesday
20. Wednesday
21. Thursday
22. Friday
23. Saturday
24. Sunday Holiday
25. Monday
26. Tuesday
27. Wednesday
28. Thursday
29. Friday
30. Saturday

MONTHLY TESTS.

DECEMBER 1968

1. Sunday Holiday
2. Monday Sessional Exams.
3. Tuesday
4. Wednesday
5. Thursday
6. Friday
7. Saturday
8. Sunday Holiday
9. Monday
10. Tuesday
11. Wednesday
12. Thursday
13. Friday
14. Saturday Holiday
15. Sunday Holiday
16. Monday
17. Tuesday
18. Wednesday
19. Thursday
20. Friday
21. Saturday
22. Sunday Holiday
23. Monday
24. Tuesday
25. Wednesday
26. Thursday
27. Friday
28. Saturday Monthly test
29. Sunday Holiday
30. Monday Monthly test
31. Tuesday Monthly test

JANUARY 1969

1. Wednesday New year: Holiday for students.
2. Thursday
3. Friday
4. Saturday
5. Sunday Holiday
6. Monday
7. Tuesday
8. Wednesday
9. Thursday
10. Friday
11. Saturday Holiday
12. Sunday Holiday
13. Monday
14. Tuesday
15. Wednesday
16. Thursday
17. Friday
18. Saturday
19. Sunday Holiday
20. Monday
21. Tuesday
22. Wednesday
23. Thursday
24. Friday
25. Saturday
26. Sunday Holiday
27. Monday
28. Tuesday
29. Wednesday
30. Thursday Monthly tests
31. Friday

FEBRUARY 1969

1.	Saturday	
2.	Sunday	Holiday
3.	Monday	
4.	Tuesday	
5.	Wednesday	
6.	Thursday	
7.	Friday	
8.	Saturday	Holiday
9.	Sunday	Holiday
10.	Monday	
11.	Tuesday	
12.	Wednesday	
13.	Thursday	
14.	Friday	
15.	Saturday	
16.	Sunday	Holiday
17.	Monday	
18.	Tuesday	
19.	Wednesday	
20.	Thursday	
21.	Friday	
22.	Saturday	
23.	Sunday	Holiday
24.	Monday	
25.	Tuesday	
26.	Wednesday	
27.	Thursday	Monthly tests
28.	Friday	

MARCH 1969

1.	Saturday	
2.	Sunday	Holiday
3.	Monday	
4.	Tuesday	
5.	Wednesday	
6.	Thursday	
7.	Friday	
8.	Saturday	Holiday
9.	Sunday	Holiday
10.	Monday	
11.	Tuesday	
12.	Wednesday	
13.	Thursday	
14.	Friday	
15.	Saturday	
16.	Sunday	Holiday
17.	Monday	
18.	Tuesday	
19.	Wednesday	
20.	Thursday	
21.	Friday	
22.	Saturday	
23.	Sunday	Holiday
24.	Monday	
25.	Tuesday	
26.	Wednesday	
27.	Thursday	Monthly test
28.	Friday	Holiday
29.	Saturday	Monthly test
30.	Sunday	Holiday
31.	Monday	Term-days close

1. Tuesday	II.B.Sc exams. in this month.	1. Thursday	M.Sc exams. in this month.
2. Wednesday		2. Friday	
3. Thursday		3. Saturday	
4. Friday		4. Sunday	Holiday
5. Saturday		5. Monday	
6. Sunday	Holiday	6. Tuesday	
7. Monday		7. Wednesday	
8. Tuesday		8. Thursday	
9. Wednesday		9. Friday	
10. Thursday		10. Saturday	Holiday
11. Friday		11. Sunday	Holiday
12. Saturday	Holiday	12. Monday	
13. Sunday	Holiday	13. Tuesday	
14. Monday		14. Wednesday	
15. Tuesday		15. Thursday	
16. Wednesday		16. Friday	
17. Thursday		17. Saturday	
18. Friday		18. Sunday	Holiday
19. Saturday		19. Monday	
20. Sunday	Holiday	20. Tuesday	
21. Monday		21. Wednesday	
22. Tuesday		22. Thursday	
23. Wednesday		23. Friday	
24. Thursday		24. Saturday	
25. Friday		25. Sunday	Holiday
26. Saturday		26. Monday	
27. Sunday	Holiday	27. Tuesday	
28. Monday		28. Wednesday	
29. Tuesday	Monthly tests	29. Thursday	
30. Wednesday		30. Friday	Monthly tests.
		31. Saturday	

ALL INDIA INSTITUTE OF SPEECH AND HEARING
MYSORE

On the invitation of the Government of India, late Dr. Martin F. Palmer, Consultant in the United States Department of Health, Education and Welfare, Director, Institute of Logopedics, Wichita, University of Kansas, visited India in 1963 to study the problems of communicative disorders. On the basis of his recommendations, this institute was established in Mysore on 9th August 1965. The main objectives of the institute are to provide professional education, research facilities and clinical service in the field of Speech and Hearing where the number of trained persons in India is negligibly small.

His Highness Sri. Jayachamaraja Wadiyar, Maharaja of Mysore had donated 20 acres of land for the Institute. As the land donated was not suitable to the requirements of the Institute, the University of Mysore allotted 32 acres of land in their campus on lease basis for housing this Institute. The foundation stone for the Institute was laid by the President on 25th July 1966 in the University Campus. As an interim arrangement, the University has provided accommodation for the Institute and hostel facilities for the students in their buildings.

Based on the recommendations of late Dr. Palmer the Institute has started training towards the M.Sc degree course in Speech Pathology and Audiology. The course was inaugurated on 2nd October 1966 by the Honourable Minister for Health and Family Planning, and in July '67 B.Sc course was also started.

The Institute has been registered under the Society's registration act, as an autonomous body with effect from 10th October 1966 to provide for greater flexibility of action than might be possible otherwise. It is financed by the Government of India and is governed by a General Council and an Executive Council.

The following are the members of the General Council and Executive Council :-

GENERAL COUNCIL

- | | |
|--|-------------------|
| (a) His Highness the Maharaja of Mysore
Sri Jayachamaraja Wadiyar. | Patron |
| (b) Union Minister for Health, Family
Planning and Urban Development. | President |
| (c) Vice Chancellor,
University of Mysore. | Vice
President |
| (d) Health Minister
Government of Mysore. | Member |

- | | | |
|-----|--|---------------------|
| (e) | Secretary,
Union Ministry of Health
Family Planning & Urban Development
(Department of Health) | Member |
| (f) | Joint Secretary,
Union Ministry of Finance,
(Health)
Department of Expenditure | Member |
| (g) | Director General of
Health Services,
New Delhi | Member |
| (h) | Dean, Medical Faculty
University of Mysore. | Member |
| (i) | A Representative of the Depart-
ment of Health,
Government of Mysore. | Member |
| (j) | A Representative of the Union
Ministry of Education,
Government of India. | Member |
| (k) | A Representative of the Depart-
ment of Social Welfare, Union
Ministry of Planning and Social
Welfare, Government of India. | Member |
| (l) | Director,
All India Institute
of Speech & Hearing,
Mysore - 5 | Member
Secretary |
| (m) | One member of the Teaching Staff
of the All India Institute of
Speech and Hearing, Mysore. | MEMBER. |
| (n) | Any such other member as may be
admitted as member from time to
time by the Executive Council. | |

II. EXECUTIVE COUNCIL

- | | | |
|----|---|------------------|
| 1. | The Union Minister for Health,
Family Planning & Urban Development
(Sri. Satyanarayan Sinha) | Chairman |
| 2. | The Vice Chancellor,
University of Mysore,
(Dr. K.L. Shrimali) | Vice
Chairman |
| 3. | The Minister of Health,
Government of Mysore.
(Sri. Y. Ramakrishna) | Member |

- | | | |
|----|---|---------------------|
| 4. | The Secretary,
Union Ministry of Health, Family
Planning and Urban Development,
(Department of Health)
(Sri. Govind Narain) | Member |
| 5. | The Joint Secretary,
Ministry of Finance (Health)
Department of Expenditure,
(Shri D.J. Madan) | Member |
| 6. | The Director General of
Health Services,
New Delhi.
(Dr..P.K. Duraiswami) | Member |
| 7. | The Director,
All India Institute
of Speech & Hearing,
Mysore - 5.
(Dr. J.J. Dharmaraj) | Member
Secretary |

III STAFF MEMBERS OF THE INSTITUTE

- | | | |
|-----|--|---|
| 1. | Dr. JJ. Dharmaraj, M.S. | Director |
| 2. | Dr. N. Rathna, M.S. (Hunter)
M.S. (Gallaudet), M.A.T.,
Ed. D (Indiana) | Reader in
Speech Pathology |
| 3. | Shri. J. Bharathraj, M.A., D.M.P. | Reader in
Psychology |
| 4. | Miss. Shailaja Nikam, M.A.(California) | Reader in
Speech Pathology |
| 5. | Smt. Rekha sen, B.A., C.T.D.
U.C.T.D. (Manchester) | Lecturer in
oral deaf teaching |
| 6. | Sri. M.N. Hegde, M.A. D.M. & S.P. | Lecturer in
Psychology |
| 7. | Sri. N.C. Appalacharyalu, M.Sc., | Lecturer in
Electronics |
| 8. | Mrs. Saraswathimenon, M.A.(Columbia) | Lecturer in
Speech Pathology |
| 9. | Sri. M.V. Govindarajan, M.A.
B. Lib. Sc., | Librarian |
| 10. | Sri. S. Satyanarayana Murthy,
M.Sc., Tech. | Scientific
Assistant
in Electronics |
| 11. | Sri. E. P. Balakrishnan, M.A., B.T., | Clinical
Assistant |

- | | | |
|-----|---|--|
| 12. | Sri. P. Chandra, B.Com., B.Ed., | Clinical
Assistan |
| 13. | Mrs. Iffath Aslam, B.A., B.Ed., | -do- |
| 14. | Dr. K.G. Das, M.D., M.R.C.P(Eng)
Professor of Medicine,
Mysore Medical College,
Mysore. | Visiting
Physician |
| 15. | Dr. I. Amla, M.B.B.S., M.R.C.P.,
D.C.H., Mysore Medical College,
Mysore. | Visiting
Paediatricia |
| 16. | Dr. P. Subba Rao, MB.B.S. D.A.B.O.
F.A.C.S.(USA) Associate Professor
of EN.T. Mysore Medical College. | Visiting
ENT Speciali |
| 17. | Professor of Neurosurgery,
All India Institute of
Mental Health, Bangalore. | Visiting
Neurosurgeon |
| 18. | Associate Professor of Neurology,
All India Institute of
Mental Health, Bangalore. | Visiting
Neurologist |
| 19. | Dr. Krishna Urs, M.B.B.S, M.Sc
Associate Professor of Anatomy,
Mysore Medical College, Mysore. | Part time
Professor
Anatomy |
| 20. | Dr. D. Ekanthappa, M.B.B.S., M.S.
Associate Professor of Physiology,
Mysore Medical College, Mysore. | Part time
Professor o
Physiology |
| 21. | U. Ramachandraiah, M.B.B.S., M.D.
Professor of Pathology,
Mysore Medical College,
Mysore. | Part time
Professor o
Pathology |
| 22. | Dr. Manappa Naik, M.A., Ph.D.
Reader in Linguistics,
Manasagangothri, Mysore. | Part time
Reader in
Linguistics |
| 23. | Sri. J. Alexander
University of Mysore,
Mysore. | Part time
Lecturer in
English |
| 24. | Mr. K. Gopal, M.Sc.,
Lecturer in Physics,
Manasagangothri,
Mysore. | Part time
Lecturer
in Physics |

THE COURSES OFFERED AT THE INSTITUTE

At present the Institute is conducting the M.Sc and the B.Sc courses in Speech Pathology and Audiology. It is proposed to conduct diploma courses and short term courses for medical graduates and several levels of education required for different types of Speech and Hearing work.

I. TWO YEARS' MASTER'S DEGREE COURSE IN SPEECH PATHOLOGY AND AUDIOLOGY

The Institute offers courses for the degree of Master of Science in Speech and Hearing.

DURATION

The duration of the course is of three academic years including the post examination internship of one year. In order to qualify for the M.Sc Degree, every candidate will have to undergo an internship for a period of twelve months after passing the final examination at the end of the second year, in an Institution recognised by the University of Mysore. However, this is not required in cases of those who have already obtained the B.Sc degree in Speech and Hearing.

QUALIFICATION FOR ADMISSION

Candidates who have passed a Bachelor's Degree in any of the following areas from a recognised University, will be eligible for admission to M.Sc Degree course.

- (a) Psychology
- (b) Physical or natural sciences
- (c) Education
- (d) Linguistics
- (e) Medicine

Additional qualification in the education of the handicapped, occupational therapy, physiotherapy or nursing is desirable. Since the medium of instruction is English, the candidates must be proficient in that language.

MEDICAL CERTIFICATES

All candidates should produce the required medical certificate before joining the course.

AGE LIMITS

The age limit for admission to M.Sc degree course is 25 years. The candidate should not be over 25 on 1st July of the year in which they are to be admitted.

NUMBER OF SEATS AVAILABLE

There are **five** seats available for admission to the M.Sc degree course,

STIPEND

The candidates selected for the M.Sc course will be paid a monthly stipend of Rs. **200/-** per month for nine months in each year.

All stipendaries are required to execute a bond with the Institute to the effect that they would successfully complete the specified years of study and that if they discontinue the same, they would repay the amount of stipend they have received and also that they would serve in a recognised Institution for not less than a period of 3 years after the completion of the course.

ATTENDANCE, PROGRESS AND CONDUCT

Each academic year shall be taken as a unit for purposes of calculating attendance. A student shall attend not less than three fourths of the number of actual working periods during the academic session in each of three categories, lectures, practicals and seminars during each year.

A student's progress and conduct shall be certified as "satisfactory" by the Head of the department concerned.

A student who does not satisfy the requirements of attendance, progress and conduct shall not be promoted to the next class or permitted to take the examination as the case may be.

ACADEMIC YEAR

The Academic Year for the course shall be from 16th June to 15th March of the following year. Each year shall consist of two terms as follows :-

First term	...	16th June to 15 October
Second term	...	16th November to 15 March

The vacations and other holidays during the year shall be as prescribed by the University of Mysore.

However, as a transitory measure the academic year for the first batch of students has commenced from 2nd October '66

1st term	..	2nd Oct to 30 Apr
2nd term	..	1st June to 24 Sept

No of hours of tuition per week

Theory	..	20 hours per week
Practicals	..	16 hours per week

Total 36

Working hours : Week days (including Saturdays)

Theory : 10.00 A.M. to 1 P.M. and 2 - 3 P.M.

Practicals : 3.00 P.M. to 5.30 P.M.

The topics to be covered shall be distributed over the two years of study.

SCHEME OF EXAMINATIONS (M.Sc)

There will be two university examinations. The M.Sc I Examination will be held at the end of the first year and the final examination, at the end of the second year.

The M.Sc I examination will have five theory papers each carrying maximum marks of 100. 20 marks in each paper will be set apart for assessment of class work.

FIRST EXAMINATION

B 1.	Introduction to speech therapy	I Paper	100
B 4.	Anatomy, Physiology, Neurology of speech and hearing		
B12.	Development of speech and Language.		
B 2.	Introduction to Audiometry	II Paper	100
B 3.	Introduction to the rehabilitation of the aurally handicapped.		
B 10.	Organisation and Administration of speech and hearing centers		
B 5.	Methods of Research	III Paper	100
B 6.	Statistics		
B 7.	Psychology of the Handicapped	IV Paper	100
B 8.	Clinical Psychology		
B 9.	Applied Linguistics	V Paper	100
B11.	Experimental Phonetics		
Total marks			500

FINAL EXAMINATION

At the end of the second year the students of the two degrees (Speech Pathology and Audiology) will take examination in the specialisation areas. However the courses A1 & A 2 of Audiology and S1 and S3 of speech pathology pres-

cribed for the second year will be common to all candidates taking the final M.Sc examination. The examination will be in five theory papers each carrying 100 marks of which 20 marks will be set apart for assessment of class work. Another 100 marks will be set apart for practical clinical work. The detailed scheme of examination will be as follows :-

M.Sc IN SPEECH PATHOLOGY

S 1	Diagnostics methods in speech pathology	I paper	100
S 3	Articulation disorders		
A 1	Differential diagnostic Audiometry	II paper	100
A 2	Audiometry with children		
S 2	Psychotherapy in speech pathology, stuttering	III paper	100
S 5	Aphasia and Allied Disorders		
S 6	First seminar in Speech Pathology (Mental retardation, cerebral palsy, delayed language)	IV paper	100
S 7	Second Seminar in Speech Pathology (voice disorders, Laryngectomy and cleft palate)	V paper	100
			<hr/>
			Theory - 500
			Practicals- 100
			<hr/>
			Total 600

M.Sc in AUDIOLOGY

S 1	Diagnostic methods in speech pathology	I paper	100
S 3	Articulation disorders		
A 1	Differential diagnostic Audiometry	II paper	100
A 2	Audiometry with children		
A 3	Speech, Hearing, and communication.	III paper	100
A 4	Hearing Aids and Auditory Training		
A 9	Speech reading and Speech		
A 5	Electronics		
A 6	Laboratory instrumentation & Maintenance	IV paper	100
A 7	Experimental Audiology	V paper	100
A 8	Acoustics		
			<hr/>
			Theory 500
			Practicals 100
			<hr/>
			600

MONTH OF EXAMINATION

The examination shall be held in the month of April each year, or as may be prescribed by the University.

However as a transitory measure, the first batch of students shall have the examination in September.

MINIMA FOR A PASS

- (1) No candidate shall be declared to have passed in the first examination unless he obtains 50 percent in the aggregate marks for the whole examination.
- (2) No candidate shall be declared to have passed the final examination unless :-
 - (i) he obtains not less than 40% of the marks in aggregate of the written papers.
 - (ii) he obtains not less than 40% of the marks in aggregate of the dissertation, case work and viva voce.
 - (iii) he obtains not less than 40% of the marks in aggregate of the practicals.
 - (iv) he obtains not less than 50% of the marks in aggregate of the whole of examination.
- (3) A candidate who fails to secure the minimum for a pass in the first examination shall be permitted to go to the second year class. He shall take the first examination along with the final examination. However, his results for the final examination shall not be declared until he passes the first examination.

CLASSIFICATION OF SUCCESSFUL CANDIDATES

No class shall be declared in the first examination. Candidates shall be declared to have passed or not passed in the first examination.

Successful candidates at the first and final examinations shall be classified on the basis of aggregate marks for the whole examination, taking into account the marks in the first and final examination as follows :-

<u>First class</u>	..	Those who obtain not less than 60% of the aggregate marks of the whole examination.
<u>Second class</u>	..	Other Successful candidates.

The names of the candidates shall be arranged in the order of merit.

FEES

Tuition	..	Nil
Examination fee	..	Rs. 60.00 for each Exam.
Marks sheet fee	..	Rs. 2.00
Total		<u>62.00</u>
Registration fee (University)	..	Rs. 3.00
Admission fee	..	Rs. 5.00
Library fee	..	Rs. 2.00
Sports fee	..	Rs. 6.00 (Students)
Reading room fee	..	Rs. 4.00 (Associati
Medical fee	..	Rs. 2.00
Calendar and Journals	..	Rs. 6.00
Caution deposit (refundable)	..	Rs. 150.00
Total		<u>178.00</u>

It is intended that the level of proficiency attained by the students after training be equivalent to that attained by students in other parts of the world. The courses of study, the hours and methods of work have been designed with this in view, and they would demand a dedicated effort from the students. A great emphasis is laid on practical experience in handling cases with speech and hearing problems. The student start working with cases under supervision very early in the training programme.

COURSES PRESCRIBED FOR M.Sc

Ist year

- B 1 - Introduction to Speech Pathology
- B 2 - Introduction to Audiology
- B 3 - Introduction to Aurally Handicapped
- B 4 - Anatomy, Physiology and Neurology of Speech
- B 5 - Methods of Research

IIInd year Speech Pathology

- A 1 - Diagnostic Audiometry
- A 3 - Audiometry with Children.
- S 1 - Diagnostics
- S 2 - Psychotherapy in Speech Pathology
- S 3 - Artic, Disorders
- S 4 - Stuttering

- | | | | |
|-----|---|---|----------------|
| B 6 | Statistics | S 5 | Aphasia |
| B 7 | Psychology of the exceptional | S 6 | First Seminar |
| B 8 | Clinical Psychology | S 7 | Second Seminar |
| B 9 | Applied Linguistics | S10 | Tutorials |
| B10 | Organisation and Administration of Speech and Hearing Centres | (S9 which is clinical work has been included in the practicals for the various subjects) | |
| B11 | Experimental Phonetics | | |
| B12 | Development of Speech and Language | | |
- SECOND YEAR M.Sc **Audiology**

- | | | | |
|-----|------------------------------------|-----|---|
| S 1 | Diagnostics in Speech Pathology | | |
| S 3 | Articulation Disorders | | |
| A 1 | Differential Diagnostics | A 6 | Laboratory instrumentation & maintenance. |
| A 2 | Audiometry with Children | A 7 | Experimental Audiology |
| A 3 | Speech, Hearing and communication | A 8 | Acoustics |
| A 4 | Hearing Aids and Auditory Training | A 9 | Speech Reading |
| A 5 | Electronics | A12 | Tutorials |
- (A 10 which is clinical work has been included in the practicals for various subjects)

Choice of courses of specialisation - either speech pathology or audiology - will be made in toto, before the beginning of the second year. No piecemeal electives will be offered. This choice will be at the end of the first year taking into account the interest of the student, the academic background of the student and the aptitude as observed during the first year. See Appendix A for the detailed curricula.

HOW TO APPLY

Applications will be called for before the commencement of the courses every year, and an admission notice will be published in leading newspapers in India. Following this, the applications can be obtained on request from the Director by paying Rs. 3/- either in cash or through M.O. If required, the candidates will be called for an interview at Mysore

and they will have to appear for the same at their own expense. All those candidates who have been selected for the course will be sent a communication, prescribing a time limit within which they are to join the course.

II. THREE YEARS BACHELOR'S DEGREE COURSE IN SPEECH PATHOLOGY AND AUDIOLOGY

DURATION OF THE COURSE

The Institute offers a three years' course leading to the degree of Bachelor of Science (B.Sc) in Speech and Hearing of the University of Mysore.

QUALIFICATIONS FOR ADMISSION

Candidates who have passed the pre-university examination of the University of Mysore or of any other recognised Institution with Physics, Chemistry and Biology as their optional subjects are eligible for admission.

MEDICAL CERTIFICATES

All candidates should produce a medical certificate before joining the course.

The rules and regulations governing attendance, progress and conduct, academic year and working hours are the same as those for the M.Sc course.

COURSE OF STUDY

The course of study leading to the B.Sc degree will comprise the following

I Year

English

Basic Sciences - Physics and Mathematics

Basic Medical Sciences : Elementary Human Anatomy, Physiology & Pathology
Essentials of Medicine & Surgery.

Introduction to Psychology and Social Dynamics

Linguistics and Phonetics

Introduction to Speech Pathology and Audiology

II year

Psychology

1. Developmental Psychology & Psychology of Learning
2. Introduction to clinical psychology and mental testing.
3. Statistics.

Speech Pathology

1. Introduction to Speech Pathology
2. Voice and Articulation
3. Organisation of Speech & Hearing centres.

Audiology

1. Speech Reading
2. Hearing Aids and Auditory Training
3. Introduction to Audiology

III year

Speech Pathology

1. Speech therapeutic methods
2. Stuttering
3. Organic speech problems
4. Practicals

Audiology

1. Special tests in Audiometry
2. Education of the Aurally Handicapped
3. Supervised teaching of the deaf
4. Practicals

SCHEME OF EXAMINATION

At the end of the first academic year a class examination will be held in the following subjects :-

English
Basic Sciences
Basic Medical Sciences
Phonetics and Linguistics

There shall be two public examinations one at the end of second academic year and the final at the end of the third academic year.

The class examination at the end of first academic year shall consist of four theory papers of three hours duration carrying 100 marks each. Passing the class examination is compulsory for all the candidates.

A candidate who has not passed the class examination will not be eligible to appear for the public examination. However he will be permitted to enter the next year and has to successfully complete the class examination in the subjects which will be held at intervals of four months, twice a year (i.e., in August and December every year)

The public examination at the end of the second academic year shall consist of three theory papers of 100 marks each three hours duration in two parts.

Part I - Consist of two theory papers in Psychology.

1. Developmental Psychology and Psychology of learning.
2. Introduction to clinical Psychology and Mental Testing.

Part II - Consists of one theory paper in statistics.

20% in each of these 3 papers shall be set apart for assessment of class marks.

The public examination at the end of the 3rd academic year shall consist of 6 theory papers of three hours duration of 100 marks each. 20% of each theory paper will be set apart for assessment of practical and clinical class work throughout the three years. There shall be no practical examinations.

B.Sc final - Public Examination

Part I - Speech Pathology

Paper I - Introduction to Speech Pathology and Voice and Articulation.

Paper II - Speech Therapeutic methods and organisation of Speech and Hearing Centers.

Paper III- Stuttering and organic Speech problems.
Practicals (class assessment)

Part II - Audiology

Paper I - Speech Reading, Hearing Aids & Auditory Training

Paper II - Education of the Aurally Handicapped

Paper III- Introduction to Audiology and Special tests in Audiology

Practicals- (Class Assessment)

II. APPEARANCES FOR PUBLIC EXAMINATION

Candidates appearing for the public examinations at the end of 2nd and 3rd academic years shall apply for all the parts in each examination when appearing for the first time. These examinations shall be held twice a year.

If a candidate fails in a part or parts will appear for all the papers of that part or parts at the next examination.

MINIMA FOR A PASS

- (a) No candidate shall be declared to have passed in the class examination in the basic subjects held at the end of the first year unless he obtains not less than 35% of marks in each subjects.
- (b) No candidate shall be declared to have passed in the public examination held at the end of the second year in the subjects mentioned unless he obtains the minimum of 30% in each paper and an aggregate of not less than 35% in each part.
- (c) No candidate shall be declared to have passed in the final examination held at the end of the 3rd year unless he obtains not less than 35% of marks in each paper and an aggregate of not less than 40% marks in each of the two parts.
- (d) A candidate who fails to secure the minimum for a pass in the public examination at the end of the 2nd year shall be permitted to the third year class. But he should successfully complete the same at least 6 months prior to appearing for the final examination.

CLASSIFICATION OF SUCCESSFUL CANDIDATES

Successful candidates at the public examination shall be classed in the respective parts on the basis of the aggregate marks.

- | | | |
|--------------|----|--|
| First class | .. | Those who obtain not less than 60% of the aggregate marks in the part. |
| Second class | .. | Those who obtain less than 60% of the aggregate marks in the part, but not less than 50% |
| Third class | .. | Other successful candidates. |

The names of those who pass in the I and II class shall be published in the order of merit and the names of those who pass in III class, shall be published in the alphabetical order.

REAPPEARANCE FOR THE DEGREE

No candidate who has been declared to have passed in part or parts of the public examinations shall be permitted to reappear again in the same part or parts.

MONTH OF EXAMINATIONS

The examinations shall be held in the month of March and September each year, or as may be decided by the University of Mysore.

FEES

Examination fee II year	45=00
Examination fee III year	60=00
Marks card fee	2=00
Calendar and Journal	6=00
Registration fee (University)	3=00
Admission fee	5=00
Library fee	2=00
Sports fee	Students 6=00
Reading room fee	Association 4=00
Medical fee	2=00
Caution deposit(refundable)	150=00
Total	<u>178=00</u>

HOW TO APPLY

The procedure for applying to the B.Sc course is same as that for M.Sc.

III. GENERAL

PROSPECTS FOR THE GRADUATES IN THE AREA

There is a great demand for the qualified persons in this field to help those millions who are suffering from the disorders of speech and hearing. At present there are not many centres in the country which are engaged in this type of work and the Central and State Governments are going to open speech and hearing centres in all the major hospitals where the graduates of this institute will take up diagnostic, therapeutic and research work. The increase in number of rehabilitation programmes and expanding medical and auxiliary services in the country create a wide choice of jobs and excellent prospects for employment. Apart from the hospitals, these speech pathologists and audiologists will find employment in rehabilitation centres, special schools for the handicapped or deaf as well as in regular schools for screening students for these defects. Some may prefer private practice for which there is a great demand and some may prefer teaching positions and become lecturers and professors at the training centres for speech therapists and audiologists. There is also very good scope to take up research as a career in speech pathology and audiology.

LIBRARY OF THE INSTITUTE

The Institute has its own library which is a special library, having books mainly concerned with the fields of study of the Institute.

The students are allowed to borrow the books. It has a well furnished room, in which the students can easily consult the books, they require.

The library is subscribing to the important journals in the fields concerned to the study of the courses and for research.

The Institute library also contains the Wendell Johnson library, a collection of books, journals and other reading materials donated by the United States of America.

In addition to this, arrangements have been made to make use of the University library, by the students and staff of the institute, where a huge collection of books and journals are available.

CLINICAL SERVICES AND THE DEPARTMENTS OF THE INSTITUTE.

The Institute provides clinical service to those who are suffering from speech and hearing disorders. The Institute has got at present the departments of Audiology, Speech Pathology and Psychology which are actively engaged in the diagnostic therapeutic and research activities. The clinic provides the following services :-

SPEECH PATHOLOGY

No adequate survey have been carried out to estimate the number of people with speech defects. However experience shows that the number is very high. Speech defects vary greatly in type and in severity. Some are organic in nature, others are of a functional nature. Some of the speech problems are amenable to medical and surgical treatment. The aim of the Institute is to minimise the communication difficulty of the cases by providing therapy and training. At present the clinic provides for diagnosis, therapy and counselling services for the following speech problems :-

1. Stuttering (Stammering)
2. Cleft Palate (people with hypernasal voices)
3. Voice Disorders : Voicelessness, Males who speak like females and viceversa, hoarse voice whispered voice etc.,
4. Aphasia : Speech and language problems associated with paralytic strokes.

5. Laryngectomees - people whose larynx (voice box) has been removed.
6. Articulatory problems - Indistinct speech, Baby talk.
7. Cerebral Palsy - Difficulties of movement of limbs, tongue, lips etc
8. Delayed language and speech development.

AUDIOLOGY : (Hearing)

Hearing surveys have shown that 10-15 of the school go children in India suffer from a hearing loss which range from a mild to a severe loss. This constitutes a serious economical and social problem both to the individuals and the society. The individual's education is affected and so is his communication and effective participation in social activities.

It is essential that hearing problems be detected at an early age (preferably before the age of 3 years) if rehabilitation is to be effective. Education of children where the hearing loss is detected after five years of age is very difficult. The earlier the rehabilitation measures are started the better are their chances of success.

A severe hearing loss or deafness is a great handicap to a child because it hinders the acquisition of speech and language. A child who does not hear the words which he can imitate cannot acquire speech and language. The hard of hearing who hear only partially imitate what they hear and therefore their speech is misarticulated. It is necessary that the persons receive medical aid where possible, be fitted with aids where required and given special training like speech reading if they are to overcome the handicap of hearing loss. Even when the hearing is lost after speech has been acquired unless proper measures are taken a person's speech tends to become slurred and indistinct. The older person who acquires a hearing loss needs special hearing therapy to prevent a deterioration of his speech. The hearing clinic at the Institute provides diagnostic facilities and also treatment and counselling facilities for :-

All types of hearing problems including deafness both in children and adults. The facilities available are as follows :-

1. Diagnostic facilities including Audiometry.
2. Medical advice and treatment.
3. Counselling.
4. Parent Education.
5. Fitting of hearing aids and maintenance of hearing aid.
6. Therapy classes for the hard of hearing.

(Education of the deaf is a full time programme that extends over a number of years. Their rehabilitation involves a total programme of education which includes among others speech and language. At present the institute is not equipped to provide this full programme necessary for these children)

CLINICAL PSYCHOLOGY

It is observed that most of the cases suffering from Speech and for hearing problems need to be examined for possible psychological problems associated with them. Hearing and speech impairment inevitably have some undesirable consequences on the development and adjustment of the individual. And indeed in a few cases the entire difficulty could be traced to certain psychological problems as in the case of hysterical aphonia. Hearing impairment in young children is known to have quite severe effects on the mental development and this needs to be systematically evaluated. More often cases with speech problems exhibit difficulties in adjustment for which they need psychotherapeutic help. And in general, all parents of speech and hearing handicapped children need counselling.

The Institute has a team of qualified clinical psychologists who actively participate in the day to day service of the patients. Patients with speech and hearing disorders get the benefit of psychological investigations. The main areas touched upon are memory, intellectual abilities, aptitudes, personality and personality deviations.

Therapeutic work also is envisaged in their service. At present a number of stammerers are attending the clinic and getting the benefit of treatment. Wherever indicated psychotherapy is given as an adjunct treatment with other forms of speech training or auditory training. Of late a parent counselling programme has been started once a week on Saturdays.

SPECIALISTS FROM MYSORE MEDICAL COLLEGE

Professor of medicine and Professor of paediatrics of the Mysore Medical College are visiting consultants in the Institute. Cases which need to be examined by these specialists are presented to them for their advise.

WORKING HOURS

Office	..	10.00 A.M. to 5.00 P.M.
Clinic	..	3.00 P.M. to 5.00 P.M.

Application

Applicants for clinical services should attach copies of all medical reports of the case or person to be sent here, also giving a brief history of the child indicating when the child's/patient's speech and/or hearing difficulties, were first observed.

DURATION OF EXAMINATIONS

Detailed examinations of speech, hearing and psychological functions take a long time and may even be extended over a days. This is especially, true where the hearing of young children is to be tested. The co-operation of the child has to be gained first before any testing is made possible. When coming for the first examination cases will have to be prepared to spend a few days in Mysore. Whenever possible it is visible to write for an appointment. As far as possible the parents children to be examined should accompany the children

CHARGES

No charges will be made for the services provided by the Institute. However the cases/patients may have to pay any charges payable to the K.R. Hospital, Mysore for any examination or treatment received there.

RESIDENTIAL FACILITIES

At present the Institute does not have any residential facilities for patients, or their relatives. As a temporary measure 20 beds are made available at the Mysore Medical College Hospitals for non ambulant cases.

DURATION OF STAY

It is very difficult to clearly state how much time will be needed for the evaluation and treatment of hearing and speech defects,. This depends on many factors and therefore the total period will vary from case to case. Some cases may need a few days while other may need several weeks of treatment.

As far as possible the therapy will be conducted in the mother tongue of the patient either directly or through an interpreter. When this is not possible English will have to be the language of therapy.

AGE OF THE PATIENT

It is requested that cases be brought to the Institute as soon as a hearing and speech defect is noticed. Early diagnosis and early treatment go a long way towards the successful treatment of these disorders.

It is also important to note that the treatment of speech and hearing problems require the active co-operation of the patient, his parents and his family. The duration and success of the treatment and therapy will depend a great deal on such co-operation.

RESEARCH ACTIVITIES.

Several research projects dealing with various aspects of speech and hearing problems have been planned and collaboration on some of these with institutions in U.S.A. are under consideration. Research is an integral part of the training programme towards M.Sc and all the students will be expected to take up individual problems.

HOSTEL

The first phase of the hostel at Manasagangothri is complete and has been allotted to the lady students of the Institute.

The men students will continue to be accommodated at the Maharaja's College Hostel. Students staying in the Maharaja's College Hostel should strictly adhere to the rules and regulations of that hostel.

RULES REGARDING THE INSTITUTE HOSTEL

1. (a) All applications for admission or re-admission to hostels shall be addressed to the warden. They will be registered in the order in which they are received. Applications will be considered by the Director, in consultation with the warden and the names of persons selected for admission notified on the hostel's notice boards. The period in respect of admissions made during course of an academic year will expire at the end of that year and admissions will be made a fresh every year.

(b) Every application for admission or re-admission to the hostels should be accompanied with a registration fee of Re. 1/- which will be credited to Hostel fund. This fee is not refundable. Those who are granted admission should pay an admission fee of Rs. 2/- at the time of joining the hostel.

2. (a) The allotment of rooms will be at the discretion of the warden. Every member shall occupy the room assigned to him or her by the warden and shall on no account change for another, unless permitted to do so, by the warden. The occupants of the room shall be liable to pay for the repair of any damage done to the fittings and furniture of the room. The hostel authorities shall not be responsible for the loss or damage to the student's private property. Every student admitted to the hostel shall be required to pay in advance the rent and other charges as prescribed by the Institute from time to time.

(b) Each resident, on admission, will be required to pay Rs. 150 (Rupees One Hundred and Fifty only) as the Hostel Deposit, which will be returned at the time of his/her leaving the hostel every year, after adjusting any liabilities due to the hostel.

(c) The Director will have the right to refuse admission to any applicant without assigning reasons.

3. (a) The hostel establishment shall be under the direct control of the warden. Appointments etc., of members of establishment for the hostel and mess will, however, be made by the Director.

(b) The warden is responsible for proper maintenance of accounts in respects of the hostels, which he or she is in charge. If necessary, service of a clerk with experience in accounts may be made available to the warden for rendering assistance.

(c) The warden shall take rounds of the hostel building periodically and report to the Director, on the urgent repairs and improvements needed for the hostel to be carried out.

(d) Complaints against servants, if any, should be made to the warden in writing. No member shall demand any special service from the hostel servants, except through the warden.

4. DISCIPLINE

(i) Students shall keep their rooms scrupulously clean.

(ii) All inmates are expected to be in the hostels by 10 p.m. except with the special permission of the warden.

(iii) Members are not allowed to hold any meetings in the hostel without the previous sanction of the warden in writing.

(iv) No circular or subscription list shall be taken round to the members, without the permission of the warden.

(v) Members shall refrain from playing music, singing or making noise in the hostel.

(vi) Room lights must be switched off when a room is not in use. Verandah and passage lights shall be put out at 10.30 P.M. Boarders should not use electrical equipment like fans, iron and heaters etc.,

(vii) Members are particularly advised to be economical in the use of both electricity and water supply.

(viii) No member may absent himself from the hostel, without previous intimation to the warden.

(ix) No member shall stay away from the hostel at night, without the previous permission of the warden.

(x) Members are requested to preserve discipline in the hostel by observing the above rules strictly. The warden shall take notice of any breach of the rules.

(xi) The members, whose conduct and behaviour is observed to be unsatisfactory, will be liable to be evicted from the hostel and also may disqualify themselves for admission to the hostels. The parents or guardians of such students shall, however, be appraised of the situation before hand.

5. In the case of the ladies' hostel, any member wishing to go to places other than the institute or library shall inform the warden previously and the full address of the place to which she goes should be entered in the book kept for that purpose. Every member shall be in the hostel before 7 p.m. unless permitted by the warden to be late on that particular day. No member shall stay for a night or spend the week end without previously obtaining permission from the warden and

without a letter to the warden from her parent or guardian containing the names, relationship and addresses of friends or relations, with whom they allow their daughters to spend the night or week end. No member should leave the hostel without the permission of the warden and the Director of the Institute. For leaving the hostel, her parents or guardians should apply to the Director, stating the place to which she is to go. Visitors shall obtain the permission of the warden to see their friends in the hostel. Each visitor will enter his or her name, relationship, designation and address and the name of the student visited in the visitor's register. Visiting hours shall be between 4 and 6 p.m. on Saturdays and Sundays.

The names of persons, who are the relatives of the lady-students and are likely to visit, must be made known before hand i.e., before actual admission into the hostels, along with the addresses, relationship etc. In the case of defaulters, serious view will be taken, which may result in their removal from the hostels with or without notice.

6. ILLNESS

All cases of illness shall be immediately reported to the warden. The warden will make necessary arrangements and shall use his own discretion as to whether the patient may be removed to a hospital or treated in the hostel.

7. MESS → For the time being there will be one vegetarian mess. It is compulsory for the students staying in the hostel to be, members of the mess.

8. (a) The mess will have a ^{re}perfect, selected by the warden once a month among the inmates of the hostel. The ^{re}perfect shall be responsible for the purchase of all provisions and vegetables. They should maintain proper accounts for amounts received and expended by them and obtain bills and vouchers for all items except for purchase of vegetables and petty bazar articles. The warden may give them suitable advances, the accounts maintained by them being scrutinised regularly once in three days. No fresh advances should be given until the advance previously given are fully accounted for. "The prefect shall on no account delegate the duties in respect of the purchase of stores, to hostel servants or to other persons except for minor purchases. The prefects should assist in the issue of rations as far as possible.

(b) It is imperative on the part of every member of the mess to abide by the rules and regulation of the mess in force.

(c) Membership is not transferrable, either temporarily or permanently. No member can depute another person in place of himself.

(d) Every member shall pay the full mess charges for the preceding month on or before the 10th of the succeeding month to the hostel clerk and shall insist on a valid receipt being issued immediately with the signature of the warden. The accounts and charges per individual member for the month will be notified on or before the 5th of the succeeding month.

(e) In special cases, the Director may permit payments of mess charges till the end of succeeding month and recover a fine of 00=25 nP for each day delayed after 10th. Members failing to pay the mess charges by the end of the succeeding month shall forthwith forfeit his membership and shall not be allowed to partake in the mess from the next day. Such member is also liable to be removed from the Hostel after due notice.

(f) In case it becomes necessary, the warden may change the date for the receipt of the mess charges after an approval from the Director.

(g) Concessions : Unless a member is continuously absent for a minimum of 3 full days with prior intimation to the prefect, he is not entitled to any reduction in his mess charges. Reduction of mess charges will be worked out on the basis of the actual total expenditure of the month concerned.

(h) Guests : Guests of the members are eligible to partake food etc., provided by the mess, on payments of guest charges prescribed or to be prescribed from time to time. A guest is allowed only for a limited, temporary and occasional visit sufficient notice of his visit being given to the prefect previously. No guests to stay in the hostel without previous permission from the warden. The prefect, with the prior approval of the warden, can refuse to admit guest or guests without assigning reasons.

(i) Extra Charges : Members wishing to have extras in dishes, ghee, milk etc., can have them on payment of the prescribed charges.

(j) Breakfasts, meals, tea etc., will be available only during the notified hours and members coming after the notified hours are not bound to be served. Meals will not be served in rooms except in case of illness and with the permission of the Warden.

(k) Staff of the Institute wishing to join the mess may do so, after obtaining written sanction of the Director and they shall be considered as special members of the mess and shall have all the benefits of membership on payment of the charges prescribed for a member. They are governed by the same rules as any other member.

(l) The staff of the kitchen are to be treated courteously and shall not be dealt with directly for indiscipline and discrepancies. Any complaints should be lodged in writing in the Register of complaints, specially kept for that purpose.

(m) Constructive suggestions to improve the mess are always welcome and the members are requested to put up their suggestions in writing in the suggestion register, which will be reviewed by the warden and if feasible, will be put into practice.

9. No student in arrears of hostel dues will be permitted to send up his application for a University Examination or sit for a class examination until the arrears are completely paid. No boarder in arrears shall be eligible for election.

10. All inmates of the hostels will abide by the above rules and the modifications issued from time to time, to these rules.

11. PAYMENTS (a) ANNUAL PAYMENTS

Registration	1=00
Admission	2=00
Annual depreciation fee (for cooking utensils etc)	10=00
Medical fee	2=00
Annual Hostel Deposits	150=00

(b) OTHER PAYMENTS

Room rent per
term(2 ~~per~~ *terms*
per year)

Single room 60=00
(per head)

Double or 40=00
triple room
(per head)

Establish- 8=00
ment
(Monthly)

Water and 2=00
Electricity

DISCIPLINE DECLARATION

I, son/daughter, of of

class, A.I.I.S.H, Mysore, do hereby solemnly and sincerely declare that I am fully aware of the rules and regulations of the hostel and I ~~am~~ *am* bound myself to obey those rules and regulations. I also declare that I will take care of all the hostel articles, books and furniture entrusted to me and I will be responsible to make good any loss or damage to the hostel property. I agree to take the decisions of the warden as final.

Station :

Date :

Signature of the Applicant

Countersigned by

Signature of the parent/
Guardian.

N.B : Subsidiary rules not inconsistent with the above rules may be framed by the authorities of the hostel from time to

THE ALL INDIA INSTITUTE OF SPEECH & HEARING ASSOCIATION

1. There shall be a properly organized Association, consisting of its students and teaching staff, called "The All India Institute of Speech and Hearing Association" in the A.I.I.S Mysore.

- (i) (a) to promote social, cultural, physical and mental well being of the students and also to promote social life corporate feelings amongst students and the members of teaching staff.
- (b) to train the students for social service and for leadership.
- (c) to help the students develop intellectual abilities, moral qualities, natural gifts and talents.
- (d) to train the students in the art of self government.
- (e) to organize study circles and such other activities to foster academic interests.
- (ii) The means for attainment of the above objects shall be through :-
 - (a) organising informal meetings on significant occasions, lectures and debates.
 - (b) Maintaining recreation halls, reading rooms etc.,
 - (c) conducting fine arts, sports, dramatic debating and such other activities as may be decided by the President of the Association.
 - (d) organising social service activities in urban and rural areas to help the people in understanding the problems of speech and hearing.

2. Every student of the Institute shall be an ordinary member of the association and every member of the teaching staff shall be an "Honorary Member". Every ordinary member of the association shall pay an annual subscription towards the association and sports etc., as may be fixed by the President. An honorary member may pay an annual donation to the funds of the association. Every member shall have the right of participating in the activities of the association and every member shall be entitled to participation in the Institution days and to have a copy of the Institute Magazine, when published.

3. ADMINISTRATION

- (a) The Director of the Institute shall be the President of the Association.
- (b) The management of the Association shall be vested in the management committee, consisting of the following.

The President
The Vice President
The Treasurer
The General Secretary
The Sports Secretary
One Representative from each class

4. ELECTIONS

The President shall fix a day for electing the student office bearers. There will be atleast seven days notice of the date for the election and at least three days notice for receiving nomination in a prescribed form. The nominated members will be notified by the President 3 days before the election day. The election shall be by secret ballot. In the event of a tie the President shall cast the deciding vote. In the event of the required number of candidature not being received the vacancies shall be filled in by nomination by the President. In case of any special events concerning elections and their results, the decision of the President shall be final. The Vice President and the Treasurer will be the members of staff, nominated by the President.

5. THE QUORUM

The quorum for the meeting of the managing committee shall be the one third of the total number of the committee members. When a meeting of the managing committee is adjourned for want of quorum, no quorum is necessary for such an adjourned meeting, members present shall form the quorum.

The managing committee shall constitute sub. committees when necessary for various different activities.

The managing committee will meet as often as necessary but not less than twice a year. The Secretary will prepare the agenda of the managing committee in consultation with the members of the committee. Every business of the association including purchases, sales payments etc., shall require the sanction of the managing committee or that of the President in case of Urgency. The general Secretary shall work as the Secretary of the committee. The agenda for the general body will be prepared by the managing committee.

6. GENERAL BODY

The general body of the association consists of all the ordinary members and honorary members and it shall meet once in every year during the first term to approve the business conducted by the managing committee during the proceeding year and to sanction the budget for the current year, to discuss and decide such other items, as may be placed before it by the President. Seven days prior notice to the members shall be

necessary for this meeting and the quorum shall be 10 per cent of the total number of members of the association. Extraordinary general body meetings may be summoned by the President on receipt of a requisition of 20 per cent of the members for any specific purpose giving a notice of at least 3 days.

All business in the general body meeting as well as the managing committee meetings shall be decided by a majority votes of the members present. The President shall have a casting vote in case of a tie.

The President shall have the power of vetoing the decisions of the general bodies, managing committee and sub-committee and of certifying the passage of any measure which in his opinion is necessary for proper management of the association. He shall have also the powers, in cases of special necessity and emergencies, to sanction the expenditure from the association budget, to the extent necessary, for any specific purpose. He may disallow any subject brought before any meeting and permit consideration of any request not in the agenda of the meeting.

The President shall preside over the meetings of the general bodies and the managing committee. In the absence of the President Vice-President shall preside over such meetings and he shall be competent to exercise all the powers of the President on such occasions.

7. CORRESPONDENCE

The routine correspondence of the association shall be conducted by the general secretary, under the direction of the President. The correspondence with the University, President and Chairman of the General Council and Executive Council and other higher authorities in the state or outside shall however be conducted by the President. The Secretary shall be responsible for the issue of notices of the meetings etc. and also for maintenance of the minute books of the general body, managing committee etc.,. The president may nominate an elected member of the association as Joint Secretary to help the General Secretary in his work. In the absence of the General Secretary he will be carrying out all the duties and functions of the General Secretary.

8. SUBSIDIARY RULES

Subsidiary rules not inconsistent with the above rules necessary for conducting the business of the association and of its constituent bodies may be prepared by the President in consultation with the Managing Committee and notified in the Association Office.

The Association clerk shall maintain a dead stock register,. The Vice-President shall have power to sell or dispose of superfluous, useless or unserviceable stock in consultation with the President after observing the formalities.

At the first meeting of the managing committee, the general secretary shall present a statement of accounts for the past year, amount of the reserve fund and estimated receipts during the current year. The tenure of the office bearers will be for a period of one year from June to June.

9. EXTRA POWERS OF THE PRESIDENT

The President shall have the power in all cases not herein provided for, to take such action as may be necessary to promote the objects and interests of the Association and its constituent bodies if any. Disciplinary action against the defaulters, as may be necessary, shall be taken only by the President. The President shall be the Chief Executive Officer of the Association and he may for this purpose, requisition the services of the members of the managing committee to the extent necessary.

DISCIPLINARY REGULATIONS

GENERAL

All the students must observe the rules and regulations of the Institute and of the hostels in which they reside. Proper behaviour is essential in this situation because the good of the student body and also the reputation of the Institute are involved. Good public relations are an asset to any institution and more so with this Institute whose one of the objectives is to serve people. A serious view will be taken of breaches of discipline particularly those involving lack of self restraint and a failure to live up to obligations. Repeated misconduct may result in the dismissal of the student concerned.

ABSENCE AND LEAVE

1. Any student who absents himself without leave (unless such leave is satisfactorily explained) shall be punished by his losing attendance for two days for every one days absence.

The stipendaries will lose half a day's stipend if they abstain for one period and they will lose the whole day's stipend if they abstain for two or more periods.

2. If a student absents himself without leave for more than ten consecutive days, his name will be removed from the register and he will be readmitted only on the payment of a prescribed readmission fee.

3. The stipendiary candidates are entitled for seven days of casual leave, and for 21 days leave on Medical Grounds subject to the production of medical certificate from an authorised civil assistant surgeon, Grade I.

4. Students when attacked with illness are to report the same in writing to the Director and are to produce a Medical Certificate from a registered medical practitioner.

5. Any student absenting himself for the purposes of attending a police office or any law court shall be subjected to the same penalty as if absent without leave, unless he can produce a certificate that his attendance was necessary in the concerned office.

6. Leave of absence during the vacation shall be granted only to those students whose progress and conduct have been satisfactory.

7. Application for leave from a student living in a hostel must be countersigned by the concerned warden of the hostel.

CLASS ROOM

1. On the teacher entering his class room, the students rise and remain standing till they are asked to sit or till the teacher takes his seat.

2. No student shall be allowed to leave the class room without the permission of his teacher or until the class is dismissed.

3. Students are expected to assemble in the class room at the appointed hour, when the roll shall be called and the absence of any student noted. The students are required to stand up and answer their names. A student coming into the class room after roll call may be refused admission or deprived of attendance. He shall not enter the class late without permission.

4. A student who disturbs a class in any manner or does not keep discipline may be expelled from the class by the teacher. A pupil so expelled shall be deemed to be absent for two periods without leave. The teacher's decision shall be final.

BOOKS AND APPARATUS

1. Every student shall provide himself with all the prescribed text books and necessary instruments.

2. Every student, to whom books or other property of the Institute are entrusted, shall be held responsible for their preservation in good condition and in the event of their being lost or damaged, they shall be required to replace them or defray their cost.

3. Any student breaking or injuring any Institute property shall be required to pay the cost of repair or replacement. In case of wilful damage, he shall also be punished in such manner as the Director may think fit. The student may not be required to pay the cost if the teacher in charge certifies that the breakage was purely due to accident and not due to any neglect on the part of the student.

DRESS

All students should be dressed cleanly and tidily. Suitable footwear should be worn.

GENERAL

1. All the students must observe the rules and regulations of the Institute and of the hostels in which they reside. Proper behaviour is essential in this situation because the good of the student body and also the reputation of the Institute

are involved. Good public relations are an asset to any Institution and more so with this institute whose one of the objectives is to serve people. A serious view will be taken of breaches of discipline particularly those involving lack of self restraint and a failure to live up to obligations. Repeated misconduct may result in the dismissal of the student concerned.

2. Each student is required to attend punctually at the stated hours for the lecture, seminars, conferences and clinical work.

3. Every student must attend at least 75 percent of the total number of classes for the year to enable him to obtain a certificate of attendance. For the M.Sc students the attendance will not be condoned under any circumstances beyond 25% and for the B.Sc students it may be condoned only under exceptional circumstances.

4. "Attendance Certificate", prescribed by the University, shall not be granted to any student unless he has shown satisfactory progress to the authorities responsible for granting the certificate and until he has paid all demands against him.

5. Students should attend all class and sessional examinations. Applications for leave of absence from the sessional examinations should be made through the head of the department concerned. Exemption from attendance will be granted only under exceptional circumstances. The absentees may be given a written examination by the teacher without further notice. If they fail to take this examination also they will be awarded zero marks for that particular examination. However if a candidate absents himself from an examination without the permission or the reasons given by him are not satisfactory, he would be considered to have failed in the examination. In addition, they are liable to be detained in the same class or may not be permitted to sit for the University Examination.

6. At all examinations, whether class examinations, monthly tests or sessional examinations, students are forbidden to take into the examination hall text books, notes or manuscripts of any kind. Any student detected violating this rule or having recourse to unfair practices will be removed from the examination room and the occurrence will be reported to the Director.

7. No student or groups of students shall form an unauthorised association or organisation. They shall not arrange any unauthorised meetings and functions for any purposes. Students shall not go on strikes, and shall not attend strikes and demonstrations at other colleges/institutions. The Director might take any action that he thinks is necessary including suspension of stipend and dismissal from the Institute.

8. Students indulging in any other kinds of undesirable activities will be punished severely. If deemed necessary, they will be dismissed from the Institute.

9. Misappropriation of any property or funds of the Institute or of any recognised organisations of the Institute by the students will be discharged from the Institute.

10. No game of any sort is to be played during the working hours of the Institute.

11. Smoking within the class room, library and clinic is prohibited.

12. The Director may place himself in communication, when necessary, with the parents or guardians of the students whose attendance is irregular and conduct unsatisfactory. Students who are incorrigible even after the warnings shall lose their stipend and further are liable for discharge from the Institute.

13. The Director may issue from time to time with the approval of the appropriate authority, any other disciplinary regulations regulating the conduct of students, with a view to maintaining the discipline and dignity of the Institute.

RAILWAY TRAVEL CONCESSION FOR STUDENTS

RAILWAY CONCESSIONS

Railway concession is available for the bonafide students for travelling between their college and home, on educational tours and for participation in recognised sports tournaments.

Concession tickets will be issued directly by the station master on production of a concession certificate, duly certified and signed by the Head of the Institution to the station master concerned. The form of certificate for rail concession is standardised and is available with the head of the Institution. The concession certificate will be in 3 folds. The form duly filled may be sent to the station, upto 15 days in advance of the date of Journey.

Murthy/

ALL INDIA INSTITUTE OF SPEECH AND HEARING
MYSORE - 5

COURSE OUTLINES FOR THE M.SC DEGREE *

TITLE - INTRODUCTION TO SPEECH PATHOLOGY

Number - B - 1 (M. Sc)

Descri- - Introduction to speech and disorders of
ption speech and an over all view of different
types of speech disorders and methods of
treatment.

Objectives- 1. To develop a knowledge of the diff-
erent types and causes of speech handicaps.
2. To understand normal speech and lan-
guage development and to learn what might
happen to cause deviation.
3. To establish an understanding of the
speech and hearing problems on a child's
development.
4. To introduce the students to various
methods of therapy.
5. To help understand the role of the
speech therapist in therapy with cases.

Topical - Speech : Characteristics of Normal Speech
outline Development of Speech.

Speech Defects

Types of Disorders

Test, Methods and Rationale for therapy for
various problems.

Misarticulation, stuttering (stammering)
voice problems, cleft palate, other organic
problems, delayed speech.

Methods of Therapy

Role of the speech therapist.

Relationship to other disciplines.

Procedu- - 1. Lectures
res emp- 2. Discussions
loyed 3. Demonstrations
4. Case findings
5. Special reports independent readings.

- - - - -
* The Copies of the syllabi approved by the University of
Mysore are available in the Library.
- - - - -

Text and collateral
Readings.

Van Riper

Principles of
Speech Therapy
Speech Disorders

Eisenson

Rehabilitation
Speech.

West, Kennedy
Karr.

COURSE OUTLINE

TITLE

INTRODUCTION TO AUDIOLOGY

Number

B - 2

Description

Fundamental aspects of hearing; natural testing and rehabilitation.

Objectives

1. To introduce the student to the field of Audiology and the role of Audiologist.

2. To provide background, theory and a fundamental knowledge of the techniques involved in the use of the Audiometer for the detection and evaluation of hearing loss.

Topical outline-

1. Applied anatomy, and physiology of the ear

2. Physics of sound/theories of hearing

3. Measurement of hearing/decibel concepts.

4. Thresholds of hearing. Audiometric zero.

5. Hearing loss - causes, medical and surgical treatment.

6. Tuning fork tests.

7. Audiometry - definition, its development and its scope.

8. Audiometry in children.

9. Basic tests - pure tone air and bone conduction tests.

10. Special tests - Bekesy, PGSR EEG tests.

11. Tests for functional deafness.

12. Masking - types of masking. Uses of masking.

13. Speech audiometry, its development and its use.

14. Interpretation of test results.

Procedures
employed.

Lectures.

Discussions.

Demonstrations and practical work with cases.

Text and
References.

Davis H., and Silverman S.R. Hearing and Deafness, Holt, Rinehart, and Winston, Inc (1960) New York.

Newby H, Audiology Appleton - Century Crofts (1964) New York.

O'Neill, J.J. & Oyer H.J. Applied Audiometry Dodd, Mead & Co., Inc (1966) New York.

Articles suggested from time to time

COURSE OUTLINE

<u>TITLE</u>	..	<u>INTRODUCTION TO AURALLY HANDICAPPED</u>
Number	..	B - 3
Description	..	Principles and methods of assessing and diagnosing the hearing loss. Goals of habilitation and rehabilitation. Theory and Methodology in therapy to the aurally handicapped.
Objectives	..	<ol style="list-style-type: none"> 1. To familiarise the student with the problems of hearing loss, causes of hearing loss. Assessment, Diagnosis and Treatments of hearing loss. 2. To acquaint the student with the principles and application of modern methods and techniques in therapy. 3. To acquaint the student with the principles of and necessity for amplification for the hearing impaired through hearing aids, auditory training unit. Proper selection and a balanced use of the different aids commercially available. 4. A working knowledge of the educational psychological and social aspects of hearing loss.
Topical outline	..	<p>History of the deaf Hearing problems Degrees of loss causes Goals in rehabilitation, Medical and Surgical Possibilities.</p> <p>Hearing aids Auditory Training Educational placements of the aurally handicapped - normal class. Segregation, normal + special class. Medium of instruction - manual, oral. Aural - combined, simultaneous.</p> <p>Language ; methods and steps ; language materials</p>

Speech for the deaf - TVA. Visible
Speech
Special instruments.

Vocational rehabilitation.

Problems of pre school deaf children

Parent counselling - correspondence
course via., John Tracy Clinic.

Procedures
employed

1. Lectures 2. Discussions 3. Demon-
strations 4. Collateral readings 5. Sem-
inars 6. Student reports on collateral
readings and clinical work 7. Practi-
and Examination and Therapy.

Text and Colla-
teral readings.

1. Davis and silverman .. Hearing
deafnes
2. Newby .. Audiolo
3. Hirsh .. Measure
of hear
4. Ewing .. Teachin
Deaf ch
dren to
talk.
5. Ewing .. New opp
nities
deaf ch
dren.
6. Ewing .. Educati
guidanc
the deaf
7. Groht .. Natural
language
8. Decarle .. The deaf
9. Oyer HJ .. Auditory
communi-
cation.
10. Myclebust H .. Auditory
disorder
in child

Journals and periodicals includes-
the current research of to-day.

Supplementary
material

1. Case histories.
2. (a) Observation and teaching pra-
ctice in schools for the deaf
(b) Instruments.
3. Audiological test instruments and
materials.

<u>TITLE</u>	..	<u>ANATOMY</u>
Number	..	B - 4
Description	..	Basic introduction to human anatomy and physiology with special reference to peripheral and central mechanism of oratory, articulatory, respiratory and phonetical.
Objectives	..	To familiarize the student with basic information as a basis for. (a) Recognising organic problems in persons with speech and hearing disorders. (b) Carrying out research projects (c) Further study of physiological processes. (d) Understanding the nature of physiological processes.
Topical outline	..	The Thorax The Pharynx Larynx, Nose, the oral cavities The ear, the various systems and the brain Neurological conditions in terms of signs.
Procedures employed..		1. Lectures 2. Discussion 3. Demonstrations.
Text references	..	Best and Taylor .. Human Body Gray .. Gray's Anatomy Sylvistain .. Anatomy and Physiology for Nurses.

<u>TITLE</u>	..	<u>METHODS OF RESEARCH</u>
Number	..	B - 5
Description	..	Principles underlying scientific methods of research and research designs. Methods of reporting, conducting and evaluating research studies.

Objectives

1. To introduce the students to basic principles of scientific method.
2. To introduce the students to the various aspects of planning and executing research studies.
3. To enable the students in understanding and critically evaluating Research reports.
4. To equip the students with the basic knowledge necessary to undertake independent research.

Topical outlines

1. Methods of research in behavioural sciences
2. Basis of research - the scientific approach
3. Problems and Hypotheses
4. Constructs and variables
5. Types of research experimental and ex post facto, laboratory experiments, field experiments, field studies
6. Techniques of sampling
7. Measurement, reliability and validity
8. Variance and variance control
9. Methods of inference; Mills cannot
10. Techniques of equating experimental & control groups - matching and randomization.
11. Research designs
12. Methods of observation and data collection; observation of behaviour projective methods.
13. Analysis and interpretation
14. The research report.

*** Text and collateral readings.

There is no single text for this course. However the following books are recommended.

1. Introduction to scientific method by Townsend.
2. Foundations of behavioural research by Kerlinger.
3. Research methods in behavioural sciences by Festinger and Katz.

Procedure employed

Lectures ; Discussion

TITLE

.. STATISTICS

Number

.. B - 6

Description

.. To give an orientation to the student about the basic statistical methods.

Objective

1. To enable the student to apply the statistical methods on the clinical data.
2. To train the student about application of statistical methods in research studies.

Topical outlines

1. Methods of collecting data
2. Organisation and presentation of statistical data.
3. Measures of central tendency
4. Variability - measures of
5. Percentile rank
6. Standard scores
7. Probability and the normal curve.

Objectives

1. To introduce the students to basic principles of scientific method.
2. To introduce the students to the various aspects of planning and executing research studies.
3. To enable the students in understanding and critically evaluating Research reports.
4. To equip the students with the basic knowledge necessary to undertake independent research.

Topical outlines

1. Methods of research in behavioural sciences
2. Basis of Research - The scientific approach
3. Problems and Hypotheses
4. Constructs and variables
5. Types of research experimental and ex-post facto, laboratory experiments, field experiments, field studies and survey research, action, fundamental and applied research.
6. Techniques of sampling
7. Measurement, reliability & validity
8. Variance and variance control
9. Methods of inference; Mill's canons
10. Techniques of equating experimental & Control groups - matching and randomization.
11. Research designs
12. Methods of observation and data collection ; observation of behaviour interviews and interview schedules, objective tests and scales, projective methods.
13. Analysis and interpretation ✓
14. The Research Report. ✓

TITLE

.. STATISTICS

Number

.. B - 6

Descriptions

.. To give an orientation to the student about the basic statistical methods. ✓

Objective

1. To enable the student to apply the statistical methods on the clinical data.
2. To train the student about application of statistical methods in research studies.

Topical outline

1. Methods of collecting data
2. Organisation and presentation of statistical data.
3. Measures of central tendency.

4. Variability - measures of
5. Percentile rank
6. Standard scores
7. Probability and the normal curve
8. Sampling methods
9. Correlation and Regression
10. Tests of significance
11. Analysis of variance
12. Item analysis
13. Reliability
14. Validity

Procedure employed .. Theoretical lectures, discussion, working out problems, periodical tests.

Tests & Collateral Readings .. Text : 1. Statistics - H.E. Garret

References .. 1. Elementary Statistical methods - Blummers and Linquist.

TITLE .. PSYCHOLOGY OF THE EXCEPTIONAL

Number .. B - 7

Descriptions .. The problems of normal and deviant child development, symptoms, diagnosis and therapy of various types of exceptionality.

Objectives .. 1. To introduce the students to basic principles of child development.

2. To introduce the students to different types of exceptional child and to enable them to diagnose the symptoms of various exceptional conditions through simple procedures.

3. To enable the students to understand them and evaluate the reactions of the parents of exceptional children.

4. To introduce the students to the basic principles of counselling the parents of exceptional children.

Topical outlines ..

*Genetic Foundations -
!! Behaviour - Prenatal development.

1. The normal and the exceptional
2. Brief account of normal child development* - Intellectual development, Language Development.

.. 3. The various types of exceptionally.

- (a) the intellectually exceptional
- (b) sensory exceptionality
- (c) neurologically exceptional
- (d) Emotionally exceptional
- (e) socially exceptional

4. Age of onset and personality changes and needs of the exceptional.

5. Testing the exceptional child

6. Parents of the exceptional

7. Psychotherapy guidance and counselling to the exceptional

8. Education of the exceptional

Procedure employed

The course is taught by lectures. Discussions are held to allow examples from the clinic.

Text and collateral Readings

1. Clinical psychology of exceptional children - by Louttit,

2. Psychology of deafness by Myklebust.

TITLE

CLINICAL PSYCHOLOGY

Number

B - 8

Description

An outline of the field of clinical psychology with special emphasis on the methods of study, diagnosis and appraisal of cases.

Objective

1. To acquaint the student about application of clinical procedures on cases with special emphasis on speech and hearing cases.

2. To acquaint the student about symptomatology of various clinical conditions.

3. To acquaint the student about application of therapeutic principles.

Topical outlines

- 1. Historical survey of clinical psychology
- 2. Role of clinical psychology in speech and hearing
- 3. Scope of psychodiagnostics.
- 4. Classification of mental illness Broad areas.
- 5. Neurosis
- 6. Psychosis
- 7. Organic lesions - Epilepsy - GPI etc.,

8. Mental deficiency
9. Tests of intelligence
10. Personality tests
11. Inventories and projective test
12. Psychotherapy - definition aims
13. Different approaches including psychoanalysis
14. Behaviour therapy
15. Group psychotherapy
16. Counselling (Directive and non Directive)
17. Play therapy
18. Evaluation of effects of therapy

Procedure employed

Theoretical lectures, discussions and periodical tests.

Text and Collateral readings.

Text : 1. Fundamental concepts in clinical psychology - Lazarus & Shaffer

References

1. Introductory clinical psychology Garfield.
2. Technique of psychotherapy - Wolberg.
3. Handbook of clinical psychology Wolman.

TITLE

APPLIED LINGUISTICS

Number

B - 9

Description

Basic introduction in linguistics with emphasis on languages their development and disturbances in languages.

Objectives

1. Working knowledge of the basic principles of linguistics
2. Knowledge of development of language and possible disturbance in the course of development
3. To enable the students to understand communication disorders in aphasia and other problems, with reference to linguistic patterns
4. To enable the students to plan teaching materials on the basis of linguistic principles

Topical outline

1. Communication; language; symbol system- meaning science of language; scope of linguistics

2. Linguistics structures; levels of analysis; phonetics phonemic analysis; morphemic analysis; syntax words; basic word lists; problems in making them up.
3. Phonetics; articulatory phonetics acoustic phonetics; stress and intonation; language and writing IPA practice of phonetic transcription Identification; analysis.
4. Relationship among languages; Linguistic change; comparative method
5. Developmental stages in languages; breakdown in language; aphasia and delayed language; linguistics and speech therapy; linguistics as can be applied to speech correction; preparation of lessons and text books.

Procedure employed

Lectures, discussion, practice in transcriptions

Text and Collateral readings.

Reason :

An introduction - descriptive linguistics

Hockett

- A course in modern linguistics.

Saporta

- Psycholinguistics

OUTLINE

ORGANISATION AND ADMINISTRATION OF SPEECH AND HEARING CENTRES

NUMBER

B - 10

Description

An introduction of the factors to be taken into consideration in proposing and setting up speech and hearing centres.

Objective

1. To give the student an understanding of the needs of speech centres
2. To acquaint the students of the various factors that has been considered in planning speech and hearing centres.
3. To enable the student an ability to draw up proposals for such centres.
4. To give the student an understanding of his role in the team work of rehabilitation.

Topical outlines

Procedures employed.

Text and collateral readings.

TITLE

Number

Description

Objectives

Topical outline

- .. Speech and hearing centres
Purposes and limitations varying sizes.
Staffing pattern
Equipment necessary
Space utilization
Sound treated rooms
Clinical facilities to be provided - diagnosis therapeutic, follow up, inservice training of other members of team, counselling.
Records.
Team work
Problems associated with such programmes
Some solutions

Lectures: Assignments

No text for this publications of various organisations and agencies

EXPERIMENTAL PHONETICS

B - 11 (M.Sc)

An introduction to the Physical aspects of the sound, speech mechanism and speech.

1. To provide the students the basic of Acoustic Phonetics.
2. To enable the students to read and understand research in the area.
3. To give the students an appreciation of the physics of speech

Sound

Characteristics of sound waves

Speech

The speaking mechanism

The respiration function

Breath stream dynamics laryngeal vibration

Articulation

Mechanism

Speech analysis

The sound spectrograph

Spectrograms of normal speech and defective speech

How sounds affect one another

Methods of measuring

Speech perception

Articulation scores

Factors affecting articulation scores

Speech analysis visible speech.

Procedures
employed.

1. Lectures
2. Demonstrations

Text and colla-
teral readings.

No Text

Fletcher : Speech and hearing in
communication

Pottercop : Visible speech

Bellambs : Speech chain

TITLE

DEVELOPMENT OF SPEECH AND HEARING

Number

B - 12

Description

An Introduction to prenatal and post-
natal child development.

Objectives

1. Working knowledge of the normal de-
velopment of speech structures and
speech in language.
2. To enable the students to under-
stand deviations in the development
of speech structures.
3. To enable them to understand and
place proper prescription devia-
tions from the normal development
of Speech and language.

Topical outlines

Prenatal and postnatal developmental
of the speech structures

General development of the child from
birth to five years, with emphasis on
speech development.

Procedure employed

Lectures and discussion

Text

Hurlock : Child Development

TITLEDIFFERENTIAL DIAGNOSTIC AUDIOMETRY

Number

A - 1

(Common Course)

Description

Theory, Administration and evaluation of selected tests employed in differential diagnosis of auditory behavior

Objective

1. To familiarize the student with various audiologic tests.
2. To get sufficiently acquainted in interpreting the test results taking into consideration the case history, otological, neurological and psychological findings.
3. To familiarize the student with a diological otological neurological and case history characteristics of the following types of hearing loss.
 - (a) Cochlear pathology
 - (b) Retrocochlear pathology
 - (c) Functional loss
 - (d) Middle ear pathology

Topical outlines

1. Techniques of pure tone audiometry
2. Tuning fork tests
3. Speech Audiometry
4. Special tests
 - (a) Tests for functional loss
 - (b) Objective tests EDA, EEA
 - (c) Bekesy
 - (d) SISI, TDT, ADLB, SAL
5. Recording and interpretation of audiograms
 - (a) Pattern of audiograms in relation to diseases
 - (b) A typical audiograms
6. Audiologist and the medical specialists
7. Industrial audiology
 - (a) Sound measurement and analysis of noise
 - (b) Human response to noise. Effects of noise on communication. Damaging effects of noise on communication.
 - (c) Ear protective devices
 - (d) Tests for noise susceptibility
 - (e) Medico-legal aspects.
8. Hearing conservation.

Text & Reference

Selected readings from text & Journals

Procedure

Lectures and demonstration
Students will participate in the
administration of various tests
and their interpretation.

TITLE

AUDIOMETRY WITH CHILDREN

Number

A - 2

Common Course.

Description

Evaluative techniques including audiometry and case history as aids to differential diagnosis of auditory disorders in children; habilitative procedures for the acoustically handicapped child.

Objectives

1. To familiarize the student with characteristic behavioral responses of infants and children to auditory stimuli.
2. To learn to use conditioning and motivational procedures in the administration of audiometric tests to infants and children.
3. To familiarize the student with the procedures and materials for speech audiometry for children.

Topical outline

1. Special problems in testing hearing in children
2. Importance of early assessment, diagnosis and treatment
3. Responses in neonates and infants
4. Screening tests
5. Play audiometry
6. Speech audiometry
7. Interpretation of response
8. Special tests : EDA & EEA
9. Testing in schools

Procedures

Lectures and demonstration
students will participate in testing/
screening infants, children and older
children. Visits to schools for screening school children.

Text & Reference

Mykelbust H. Auditory disorders in
children

Any additional reading suggested.

TITLE

SPEECH, HEARING AND COMMUNICATION

Number

A - 3

Description

Basic information regarding the speech and hearing mechanism with emphasis on physics and the psychology of speech & Hearing.

Objectives

1. To introduce the students to the fundamentals of psycholinguistics and psychoacoustics.
2. To enable the students to understand research papers in the areas
3. To indicate to the students the trend in research in this area.

Outlines

1. Speech
2. Neurophysiology of speech & Hearing
3. Acoustics of speech
4. Hearing
5. Physics and psychology of hearing
6. Theories of hearing - central hearing processes
7. The intelligibility of speech
8. Redundancy in speech; signal detectability and its implications
9. Cybernetics and its implications research in the area.

1. Readings

2. Lectures

3. Discussions

U.36 11.19
TITLE

HEARING AIDS AND AUDITORY TRAINING

Number

A - 4

Description

Use, performance and selection of hearing aids, physical characteristics of hearing aids, theory and methodology in giving auditory experiences to the acoustically handicapped.

Objectives

1. To familiarise the student with the acoustic and visual characteristics of language so as to understand the problems auditory training.
2. To familiarise the student with the theory, methods and materials employed in auditory training.
3. To acquaint the student with the principles of and necessity for amplification for the hearing impaired through hearing aids and training units

Topical outline

1. Hearing loss
2. Hearing aids
3. Basic elements of an hearing aid, hearing aid selection
4. Ear Mould making
5. Uses of hearing aid, individual - group
6. Elementary repair of hearing aids
7. principles of & training

8. Auditory training 9. Development of cheap hearing aid with indigenous equipment.

Procedures employed

1. Lectures 2. Discussions 3. Collateral readings 4. Student reports on collateral readings 5. Demonstrations 6. Therapy to patients viz and training Hearing aid trial etc., 7. calibration of receivers 8. Earmould making.

Text

- | | | | |
|----|-----|--------------------|--|
| .. | 1. | Beals | Noise, and hearing deafness |
| | 2. | Davis & silverman. | Hearing and deafness |
| | 3. | Jerger | Modern developments in Audiology |
| | 4. | Mandl | Hearing aids, their use, care and repair |
| | 5. | Newby | Audiology; principles and practice |
| | 6. | O'Neill | Hard of hearing |
| | 7. | O'Neill | Auditory communication |
| | 8. | Ewings | Teaching deaf children to talk |
| | 9. | Ewings | Educational guidance and the deaf child |
| | 10. | Mykle bust. | Auditory disorders |

Reading assignments are given ranging from the early classic literature of the 1940's to the current research of today. Periodicals includes the journals of speech and hearing disorders, journal of speech and hearing research.

Supplementary materials

1. Case histories of hearing impairment
2. Hearing aids commercially available
3. Calibration group and individual equipments.
4. Auditory training equipments and sound producing materials.

TITLE

ELECTRONICS AND INSTRUMENTATION

Number

A - 5

Description

A discussion of electronics and the instruments used in Audiology

Objectives

To import basic knowledge in electronics so as to make the students understand the working principles underlying the instruments used in Audiology. Also to familiarize the students with calibration techniques and maintenance of the instruments.

Topical outlines

Electronics :-

1. Electricity
2. Measurements

3. Resistors
4. Circuits
5. AC - DC capacitors
6. Oscilloscope
7. Electronics
8. Valves
9. Rectifiers amplifiers
10. Microphones
11. Loudspeakers
12. Oscillators transmitters
13. Electronic circuits
14. Electrical equipment used in speech and audiology
15. Maintenance and calibration
16. Research equipment
17. Use and construction for research
18. Assembly of equipment with indigenous sources.

Procedure employed

This is a lecture and laboratory course

Text and collateral readings.

1. Electronics and Radio Engineering by F.E. Terman
2. Basic electronics, U.S. Navy training programme
3. Speech and Hearing in communication by Fletcher.

Supplementary Materials

Laboratory instruments and charts.

TITLE

Number

Description

EXPERIMENTAL AUDIOLOGY

A - 7

Basic information regarding present concerns of the experimental audiologist and psychoacoustics.

Objectives

To introduce the students to the newer concerns of the audiologist.

To provide the students with the necessary sophistication to be able to follow research being done.

To stimulate the students to approach professional problems with a scientific attitude.

Course

Newer theories of hearing
Making up of test materials
Psychoacoustics
Binaural hearing temporary threshold shifts
Adaptation
Spatial attributes of sound
Room acoustics
Building of sound proof rooms

Electrophysiology of the ear
Research in India
Research possibilities in the indian
setting
Steriphonc hearing.

Lectures
Discussions
Demonstrations

Text

Modern Developments in Audiology
by Jerger (Ed)

Collateral Readings.

TITLE

ACOUSTICS

Number

A - 8

Description

A discussion on the principles of
Acoustics useful in Audiology.

Objectives

.. .. To familiarize the students with fun-
damentals of acoustics so as to have
clear concepts of the function of tra-
nducers and acoustical analogues of hea-
ring mechanism used in Audiology.

Topical outline

1. Periodic waveform
2. Fourior series
3. Types of waves
4. Energy and power spectrum
5. Oscillators
6. Resonance
7. Sound wave
8. Acoustic impedence
9. Sphercal waves
10. Acoustic pipes
11. Decibel
12. Electrical analysis of wave form
13. Microphones and loudspeakers
14. Amplifiers
15. Filters
16. Sound spectrography
17. Analogues - Mechanical and Elec-
trical
18. Acoustical properties of vowels and
consonants
19. Acoustic rooms or sound treated
rooms
20. Anechoic chambers
21. Acoustical engineering

Procedure employed

This is a lecture and laboratory
course.

Text and collateral
readings

Fundamentals of acoustics - Kinsler and
Frey.
Acoustical measurements - Beranck
Acoustical engineering - Olson

Supplementary
materials.

Laboratory instruments and charts.

TITLE

SPEECH READING

Number

A - 9

Description

The techniques of speech reading and auditory training.

Objectives

1. To give the students information regarding the various techniques used to teach speech reading to children & adults.
2. To enable the students to make up lesson plans and to teach speech reading.
3. To give the students practice in teaching, speech reading and auditory training.

Course outline

1. Various methods of teaching speech reading to the hard of hearing.
2. Principles of auditory training, the intelligibility and redundancy of speech and languages.

Procedure employed --

Lectures

Discussions

Demonstrations

Practical work

Text

Visual communication for the Aurally handicapped - Oyer and O'Neill

Collateral readings

Jera method - Brochman.

TITLES

SPEECH PATHOLOGY
DIAGNOSTIC EXAMINATION IN SPEECH
HANDICAPS (COMMON COURSE)

Number

S - 1 (M.Sc)

Description

Principles underlying the clinical interview and tests essential to the diagnosis. Procedures in opening record & evaluation test for various speech problems.

Objectives

1. To introduce the student to basic principles of interviewing and counselling.
2. To apply the principles of interviewing to case history taking for speech and hearing disorders.

3. To assist the students in acquiring the skills needed for performing a speech diagnostic evaluation.
4. Diagnosis and appraisal of speech and hearing disorders.
5. To introduce the student to tests important in assessing speech and hearing problems.

Topical outline

1. Differential diagnosis
2. Speech tests
3. Picture tests
4. Word tests
5. Stimulability
6. Test materials
7. Tests for voice disorders
8. Organic anomalies
9. Tests for auditory discrimination
10. Motor co-ordination
11. Tests with aphasia
12. Detailed case histories
13. Neurological examinations
14. The team approach to diagnosis.

Procedures employed

1. Lectures
2. Discussions
3. Observation and clinical practice in case history taking and diagnostic evaluation.

Texts and collateral readings

- Johnson .. Diagnostic procedures in speech pathology
- Johnson .. Foundations of speech pathology.

TITLE

PSYCHO THERAPY

Number

S - 2

Description

To give an orientation about the basic principles of psychotherapy.

Objective

1. To train the student about the practical application of psychotherapeutic principles in clinical cases, with special emphasis on cases with speech and hearing defects.

Topical outlines

- * Objective of Psychotherapy.
- Strategy of Therapy.

- Introduction to psychotherapy
- * Background and training of therapist
- prognosis for therapy.
- Psychotherapeutic devices
- Catharsis - suggestion - persuasion
- hypnosis - desensitisation - Re-education.
- Distributive analysis and synthesis
- Therapeutic principles degree of direction relation to other methods.
- Special psychotherapies. ..60

Special psychotherapies

Non directive therapy. Play and rel therapy - Group therapy . Psychodram Conditioned therapy - retraining meth ds of assessing affects of psycho- therapy.

Procedure employed

Theoretical lectures and practical demonstration periodical tests.

Text and collateral readings

1. Fundamental concepts in clinical Psychology - Lazarus and Shaffer.

References

1. Techniques of Psychotherapy - Wolberg.

TITLE

ARTICULATION DISORDERS

Number

S - 3 (M.Sc II) *

(Common course)

*Description :-

Etiology, symptomatology and therapeutic procedures for disorders of articulation.

Objectives

A working knowledge of the normal speech and hearing mechanism of the knowledge requisite for the diagnostic and therapeutic planning for articulation problems resulting from structural environment, perceptual and intellectual deficits.

2. Etiology and skill in interpreting speech diagnostic information to appraise allied professions.

Topic outline

1. Description
2. Causes of artic disorders
3. Normal acquisition of sounds - articulation of sounds
4. Types of errors
5. Testing
6. Rationale for artic therapy
7. Design for therapy
8. Techniques of therapy

Procedures employed

1. Lectures
2. Discussions
3. Tape records

Text and collateral readings.

Van Riper and Irwin - John V. Voice & articulation - Prentichall Inc 1958.

TITLE

STUTTERING

Number

S - 4

Description

Longitudinal studies of stuttering theories and therapies.

Objectives

1. A working knowledge of the prevalent theories and therapies.
2. An understanding of the rationale of therapeutic approaches and procedures accompanying the various theories of stuttering.
3. An appreciation of the likenesses and differences among the several theories.

Topical outlines

1. The stammerer
2. Cluttering and stuttering
3. Characteristics - Primary and Secondary
4. Sources of beginning stuttering
5. Maintenance factors
6. Various theories and approaches
7. Different types of therapy - symptomatic
8. Psychoanalytic, behaviour therapy Midwas dry therapy.

Procedures employed

1. Lectures
2. Discussions
3. Collateral readings
4. Student reports on collateral readings

Text and Collateral readings

Eisenson, John, stuttering : A symposium, Harper Bros, 1958.

Supplementary materials

1. Case histories of stutterers.

TITLE

APHASIA

Number

S - 5

Description

Etiology and symptomatology of disorders of the nervous system and any problems associated with it.

Objectives

1. To give the student an understanding of the nature of speech and language disturbances resulting from disturbances of the nervous system.

To give the student an understanding of the rationales of treatment for neuropathology in speech and hearing disorders.

Procedures employed

1. Lectures
2. Supplemented by demonstrations.

Topical outline

*in Aphasia

Texts and collateral readings

1. Neurology of aphasia
2. Psychological correlates of aphasia
3. Degrees and types of disturbances
4. Aphasia in children
5. Differential and diagnostic testing
6. Therapy with aphasia

Berry & Eisenson - Speech Disorders

Whipman - Aphasia

Schwell - Aphasia in Adults

TITLE

FIRST SEMINAR IN SPEECH PATHOLOGY
MENTAL RETARDATION AND MONGOLISM
CEREBRAL PALSY, DELAYED LANGUAGE

Number

S - 6

Description

Etiology and symptomatology of disorders. Speech and language associated with mental retardation, mongolism and cerebral palsy, and delayed development of language.

Objectives

1. To give the student an understanding of the nature of mental retardation & mongolism and the speech and language disturbances associated with them.
2. To give the student an understanding of the rationales of treatment for speech disorders resulting from mental retardation.
3. To give the student an understanding of the cerebral palsy and appreciation of its impact upon the development of speech.
4. To prepare the student to carryout a system evaluation and design speech and language training programme for the individual with cerebral palsy.
5. To develop a functional definition of etiology in understanding the individual differential evaluation of etiology in development.

Topic outline

- (1) Mental retardation
 - causes
 - types
 - assessment and classification
 - development of speech in mental retardation
 - incidence of speech disorders
 - speech characteristics of the mentally retarded.
 - therapy methods.
 - goals in rehabilitation

(ii) Cerebral Palsy

Cerebral Palsy types
Needs for physiotherapy and ADL training.
Diagnosis of speech difficulties
Methods of therapy
Phylogentic principles, motokinesithesis
Bobath
RIPS
Differential development and its implications

(iii) Delayed speech and language

Normal language development
Causes of delay
Diagnosis examinations
Therapy with children
Use of principles of linguistics in therapy.

Procedures
employed.

Lectures
Demonstrations

Text and collateral
readings.

Speech therapy for -Ø by west, Kennedy
the cerebral palsied. Ø and Karr.

TITLE

SECOND SEMINAR IN SPEECH PATHOLOGY
VOICE DISORDERS, LARYNGECTOMY AND
ÆSOPHAGEAL SPEECH, CLEFT PALATE &
OTHER STRUCTURAL ANAMOLIES

Number

S - 7

Description

Etiology and symptomatology and therapeutic procedures for disorders of voice including laryngectomy.

Objectives

To review the anatomy and facility of the movements in respect of phonation and resonance.

2. To assist the students in recognising and treating disorders of voice production.

3. To give the student an understanding of the cleft palate development and an appreciation of its impact on the development of speech.

4. To prepare the student to carry out a systematic evaluation and design the speech training programme for the cerebral palsied in that level.

5. To give the student an understanding of the impact of various structural anomalies - dental anomalies and their impact over the speech.
6. To prepare the student to diagnose and train defects of speech that may be associated with organic anomalies.

Topic outline

(i) Voice disorders

Anatomy of voice
 Vocal physiology
 Attributes of voice
 Disorders of voice functional; organic.
 Causes of voice disorders
 Deviations in pitch-in-loudness in quality.
 Therapy with voice disorders
 Aphonia
 Medical help in voice problems

Organic Problems

(ii) Cleft palate

Types causes
 Surgical repair
 Prosthesis, articulation disorders in cleft palate
 Therapy with cleft palate
 Dental problems, defects in speech therapy with the same.

Laryngectomy & Aesophageal speech

(iii) Laryngectomy

The operation
 Breathing
 Artificial larynx
 Aesophageal speech
 Production of voice
 Articulation
 Therapy procedures

Procedures employed

Lectures
 Demonstrations
 Tapes

Text & collateral readings.

Voice and its disorders : Green
 Voice and Articulation : Van ripper
 Morley : Cleft Palate

B.Sc IN SPEECH AND HEARING
FIRST YEAR

TITLE

ENGLISH

Number

B - 10

Description

Readings in English prose and poetry

Objectives

1. To enable the students to improve their knowledge of English Knowledge.
2. To enable the students to use the English language more effectively.
3. To give them the tools of language to help them gather information and to help them express themselves through english language.

Topical outlines

This is equivalent to the one prescribed to the **preprofessional** course

Procedures employed ..Lecture/Discussion

TITLE

BASIC SCIENCES - PHYSICS

Number

B - 11

Description

A discussion on the fundamentals of Physics

Objectives

To familiarize the students with basic topics in Physics

Topical outline

Mechanics : Newton's laws of motion- Force-work- Energy-Power (Units only in C.G.S) - Newton's law of gravitation Planetary motion - Artificial satellites.

*Electron Microscope.

Optics : Mirrors and Lenses - Simple microscope, Compound microscope.*Telescopes (Reflection and refraction types) - Projectors - Epidiascopes - Wave nature of light (interference and diffraction) - Dispersion - Colour of the sky, Raman effect.

Magnetism : Natural and artificial magnets (Permanent and electro) Inverse square law-magnetic field.

Electrostatics : Electric charge, Coulomb's law electrostatic field. Electrostatic machines.

Current electricity : Elementary ideas current flow - E.M.F. current - potential difference - Ohm's law-wheatstone's bridge - heating effect - Kirchoff's laws - alternating currents-rms values motors and dynamos - Faraday's laws of electromagnetic induction. Force on an electric current - Ammeters and Voltmeters (D.C and A.C.) Watt meters - (Sound level meters)

Microphones and speakers - Electrical filters - Amplifiers - Impedance matching - oscillators - frequency measurement.

Modern physics - atomic structure - Bohr theory of Hydrogen atom - photoelectric effect - Einstein's Photoelectric equation - X rays - Bragg's law - Atomic nucleus - proton, Neutron, Binding Energy $E=mc^2$, Nuclear Energy - Fission- Fusion source of energy in sun and stars.

Experiments (FIRST YEAR)

1. Use of travelling microscope (to find the length, dia of a given thick wire to determine its mass-to calculate its density)
2. Simple pendulum - to determine g
3. Determination of the focal length of
 - (1) concave mirror
 - (2) Convex mirror
 - (3) Concave lens
 - (4) Convex lens
4. Construction of a microscope
5. Construction of a telescope
6. Prism spectro-meter-demonstration
7. Specific gravity bottle - density of solid salt and liquid.
8. To find the pole strength of a given bar magnet using a deflection magnetometer and hence to estimate the earth magnetic field by vibration magnetometer.
9. Verification of Ohms Law.
10. Wheatstone's net (not meter-bridge)
11. Postentimeter - comparison of emf's

Procedures employed This is a lecture and laboratory course.

Text and collateral readings. A text book of Physics - Dunklan & Starling

Supplementary materials Laboratory instruments and charts.

TITLE ..
Number ..
Description ..

PHYSICS - ACOUSTICS
 B - 12 (B.Sc I Year)
 A discussion on the fundamentals of Acoustics so that the students can follow the advanced course in M.Sc

Objectives

To introduce the subject to the students

Topical outline

Acoustics : Sound waves - visual presentation of sound waves (Phonodeik and CRO) - explanation of the characteristics of sound waves - simple harmonic motion - Sine waves-damped vibrations (or oscillations)- forced vibrations - Resonance-periodic and non-periodic waves - Fourier analysis of complex wave forms-sound spectrum sound spectrographs - spectrum analysis of sound waves (both geometrical and electronic) wave analysers - characteristics of sound waves - pitch loudness quality-vowels and consonants energy and power spectrum of sound-speech, music and noise.

Vibrating systems (oscillating systems) strings rods-sonometers - membranes.

Spherical and plane waves of sound-sound pressure-particle velocity - particle acceleration - wave velocity amplitude-frequency-expressions for average energy - intensity of sound wave-loudness (units of loudness-phones) decibel - sound pressure level intensity level - measurement of sound intensity - sound level meters.

Halmholtz resonators - acoustic impedance, mechanical electrical and acoustic analogues - acoustic filters.

Recording and reproduction of sound (optical, disc and tape)

Physiological acoustics (biophysics of hearing) Audiometers.

Acoustics of buildings - sound insulation.

Ultrasonics - production, detection and (medical) uses.

Experiments

1. Resonance tube (velocity of sound)
2. Kundt's tube - using an oscillator and a speaker
3. Sonometer - frequency determination by using a tuning fork.
4. C.R.O. - Demonstration ; different wave forms - speech, music, noise.

5. C.R.O. Determination of frequency of a note using Lissajous figures (Whistle, Violin, Flute)
6. Electric filters
7. Acoustic filters
8. Use of wave analysers
9. Use of sound level meters (preferably in an acoustically bad hall)
10. To determine the M.P. of wax using a thermo couple.

Procedures employed

This is a lecture and laboratory course

Text and collateral readings

1. Text book on physics - Dunklan & Starling.
2. Text book on sound - Wood.
3. Speech and Hearing in communication. - Fletcher

Supplementary materials

Laboratory instruments and charts.

TITLE

MATHEMATICS

Number

B - 13

Description

Elementary mathematics used in Physics

Objectives

To familiarize the student with preliminaries of certain branches of mathematics used in the discussion of physics acoustics and electronics.

Topical outline

Algebra : Indices and surds. Logarithmic Quadratic equations. The general quadratic polynomial its expression and graph. The arithmetic geometric and Harmonic Progressions.

Combinatorial definitions of nPr , nCr & their expressions. Method of proof by induction explained by means of simple examples. Binomial theorem for a positive integral exponent. Notions of convergence and divergence simply explained. Convergence of the geometric series. Binomial exponential and Logarithmic expansions stated without proof.

Differential calculus : Definitions of derivative. Some standard derivatives. Geometrical interpretation of the derivatives. Derivative as a rate of change simple illustrations from physics. Tangents and normals to plane curves.

Integral calculus : Integration as the operational inverse of differentiation. Some standard integrals. Definite integral defined as an area and evaluated by a knowledge of the indefinite integral (Heuristic proof)

Differential equations : Geometrical interpretation of the equation of the first order. Homogenous equation of the first order. The general linear equation of the second order, with constant co-efficients - differential equation of simple harmonic motion.

Note : Problems and exercises demanding manipulation skill are to be eschewed.

Trigonometry : Radian measure of an angle. Definitions of the circular functions of an arbitrary angle. Values of the circular functions of X when $X=0$

Elementary trigonometric identities. Circular functions of in terms of those of x . Addition theorems for $\sin x$ and $\cos x$. Graphs of $\sin x$ and $\cos x$.

Analytic Geometry : Line, circle, Equations of parabola, ellipse and hyperbola (standard forms) in detailed treatment)

Procedures employed

This is a lecture course

Text and collateral readings

1. Elements of trigonometry - Hall and Knight
2. College algebra - Sha and Desai
3. Integral and differential calculus Santi Narayan.

Supplementary materials

Mathematical tables.

TITLE

BASIC MEDICAL SCIENCES : ELEMENTARY HUMAN ANATOMY, Physiology & PATHOLOGY

Number

14 - 1 (Human Anatomy)

Objectives

(i) to enable the student to appreciate the normal functioning of the human body with special reference to speech and hearing organs.

(ii) to enable the student to recognize deviations and understand the problem of disease.

(iii) to help the student to appreciate the speech and hearing problems associated with organic anomalies.

(iv) to give a basic understanding of the various operative procedures used in speech and hearing disorders

(v) to prepare the student for interdisciplinary communication for efficient team work.

Topical outline

Human Anatomy

(i) General introduction - definition and subdivisions - plan of the human body - systems of the body - the unit of structure and function - the cell - the cell tissues.

(ii) Osteology - terminology terminology types of bones in the human body.

(iii) Anthropology - terminology and classification of joints.

(iv) Myology - types of muscle tissue - muscles of neck, face and tongue - detailed study of muscles of larynx and the pharynx in terms of their origin, insertion, action and nerve supply.

(v) Circulatory system; blood, lymph and tissue fluid characteristics - composition and function, the heart - main arteries, veins and capillaries - lymph circulation in neck, face and head - circulation in the brain.

(vi) Nervous system - Division and functions of the nervous system - nervous tissue - neurons, nerve fibres synapse and organs - structure of the brain, and divisions - brief description of spinal cord - cerebro spinal fluid - cranial nerves - distribution supply - a brief description of peripheral nerves - sensory end organs and sensations - autonomic nervous systems - a brief description.

(vii) Respiratory system ; general outline and an account of nasal cavities, nasopharynx, and larynx.

(viii) A brief outline of digestive system so as to understand the structure and function of the stomach and esophagus.

(ix) Anatomy of the external, middle and inner ear - detailed study of the auditory pathway ; anatomy of the nose and paranasal sinuses.

(x) Anatomy of neck, face and head emphasis on study of the structure of larynx tongue, larynx, pharynx naso pharyngeal structures and oesophagus.

Physiology

(a) Muscular system; types of construction, all or none phenomena, muscle tonus, fatigue and exercise.

Circulatory and respiratory systems - heart, vessels blood pressure and factors maintaining circulation, cardiac cycle and output - blood composition, mechanism of respiration - internal and external nervous control of respiration, vital capacity, tidal air, residual air, reserve air, minimal, artificial respiration.

(b) Physiology of the nervous system, Nerve cell, reflex arc, motor reflexes, superficial and deep physiology of CNS and ANS, brief account, nerve tract, motor and sensory pathways, emphasis on auditory and visual sensations.

(c) Applied physiology, effects of heat and cold, electrical stimulation on skin and muscle, pressure local and generalized exercises.

(d) Biophysics ; auditory apparatus and sound analysis of sound, electrophysiology of sound.

(e) Function of the external, middle and inner ear, detailed function of the organ of corti, vestibular system and auditory pathways and auditory centres, theories of hearing. Defects in audition. Physiology of speech - Mechanism of sound production - Aphasia.

Pathology

(a) introduction ; definition, cell and its environment.

(b) Inflammation; acute, subacute and chronic, example.

(c) circulatory disorders; Hemorrhage, embolism, thrombosis; Ischemia etc.,

(d) Allergy and Immunity

(e) Diseases of the auditory system - otitis - otosclerosis - Tumours.

(f) Tumour and new growths.

-72-
Lectures
Demonstrations
Discussions

TITLE

Objectives
Number

ESSENTIALS OF MEDICINE AND SURGERY

As per B - 14
B - 15

Medicine and surgery

(a) details of the conditions which of importance from the point of view understanding speech and hearing disorders and their treatment.

(b) the common infectious tropical and nutritional disorders.

(c) terminology, definitions and precautions to be observed while treating cases with following conditions. T.B., leprosy, rheumatic fever, tetanus, typhoid, diphtheria, jaundice, anemias, smallpox, chicken pox, german measles, diabetes, hypertension, coronary thrombosis, embolism, valvular diseases, various diseases of the arteries, cerebrovascular accidents due to various conditions and its after effects. Measles, mumps, whooping cough, nutritional deficiency states.

(d) signs, symptoms and treatment of various ear, nose and throat conditions diseases of the sinuses etc.

(e) special techniques of examination in ENT examination of oral cavity, laryngoscopy, use of otoscope etc.,

(f) plastic surgery in various conditions affecting face, neck and oral cavity. Malignant growths in head, face and neck regions and its treatment.

(g) neurosurgery and postoperative complications in head injuries, tumours and other degenerative conditions.,

(h) orthodontia and prosthesis

(i) Neurology

Definition, approach to neurological findings, tests, signs, and symptoms types of neuromuscular and sensory disturbances due to damage to different areas. viz., motor area, 4,6 pyramidal lesions, basal ganglia, cerebellum, peripheral nerve injury, damage to respiratory centre, speech centre etc., Hemiplegia, cerebral palsy, multiple sclerosis, parkinsons disease, chorea, athetosis, cerebellar ataxia, head injuries, tumours etc.

TITLEPSYCHOLOGY

Number

B - 16

Description

The course gives an orientation to the students about the fundamentals of Psychology as a subject matter.

Objectives

1. To give a basic background in psychology.
2. To prepare the student for the other course subjects appearing later such as developmental psychology, introductory clinical psychology and mental testing, psychology of learning etc.,

Topical outlines

Psychology

General nature of subject matter - brief history of psychology, scope and definition - aim and methods of study - perception - the learning process - stages & factors in learning - theories of learning. The conditioned response - emotional behaviour - experimental approach emotional development - motivation of behaviour - sensations - vision - audition and other other sensations - intelligence various classifications of tests and their applications - aptitudes - personality methods of investigating personality - some tests of personality - application of psychology in clinical practice - the unconscious processes, dynamics of adjustment - a note on mental disorders - principles of mental hygiene.

Procedure employed

Theoretical lectures and discussions - periodical tests.

Text and collateral readings

Text : 1. General psychology - GD Boaz

Ref : 1. Psychology ; fundamentals of Human adjustment - NL. Munn

2. General psychology - JP. Guilford

3. Psychology A study - RS. Woodworths

and Marquis

TITLELINGUISTICS AND PHONETICS

Number

B -17

Description

Basic introduction in Linguistics with emphasis on languages their development & disturbances in languages.

Objectives

1. Working knowledge of the basic principles of linguistics.
2. Knowledge of development of language and possible disturbance in the course of development.
3. To enable the students to understand communication disorders in aphasia and other problems, with reference to linguistic patterns.
4. To enable the students to plan teaching materials on the basis of linguistic principles.

Topical outline

Linguistics : Approaches to the study of language - descriptive and historical - the sub systems of language - phonetic, phonemic, morphological, syntactic and semantic. Brief sketch of the history of linguistics.

Nature of phonetic analysis - (Sec : Phonetics, for details)

Phonetic analysis

Distribution, complementary distribution, partial complementation, free variation, contrast. Sounds and their attributes, phoneme and its nature, definition, different schools, aims of phonemic analysis, principles, procedure, problems.

Morphological analysis

Morph; allmorph, morphemes, archi-morpheme, identification of morphemes; different procedures. Formation of words; types of morphemes; morphological construction, morphophonemics; processes; distribution, item and arrangement, item and process.

Nature of syntax;

Division into morphology and syntax, analytical and synthetic, languages, the basic unit, morpheme, lexeme, word, compound, idiom, procedure, immediate constituent; constructions, sentence types. Phrase structure and transformation grammar, recent researches in syntax.

Language and thought

Linguistic problems in psychology; psychological problems in linguistics; psychology of communication, nature of language behaviour; structural units of language.

behaviour, psycholinguistics and its problems; acquisition of linguistic response lang. development in language behaviour speech pathology, speech therapy.

Phonetics

Nature of phonetic analysis : Its linguistic relevance and marginal nature, three approaches - auditory, articulation acoustics; the units of sound, segmentation of speech continuum; principles and criteria; the vocal apparatus and its functioning; articulation, articulators, places to manner of articulation, classification of speech sounds of vowels (close open, high low etc) consonants (stops pitch tone, juncture)

Symbolic representation of speech sounds, phonetic transcription, types, advantages limitations, IPA, English, Hindi and Regional languages (know a little) in IPA (practice) phonetic dictation, practices, comparison between phonetics and phonemics.

Procedure employed

Lectures, discussion, practice in transcriptions.

Text and collateral readings.

An introduction to descriptive linguistics by Gleason.

A course in modern linguistics by Hockett.

Psycholinguistics by SAPORTA.

TITLE

SOCIAL DYNAMICS

Number

B - 18

Description

Problems of individual, society, social behaviour and some aspects of social pathology.

Objectives

1. To introduce the students to the relationship between the individual and society.
2. To enable the students appreciate the social factors and social view points in the rehabilitation of speech and hearing impaired cases.

Topical outlines

Social dynamics

1. The individual and society in india
2. Culture and personality.
3. Castes in Hindu society-Varna, Ashra caste, class.
4. The concept of family in india - psychological factors - economic need joint and nuclear family and child welfare - family disorganisation - causes and effects.
5. Development of social behaviour-leadership - suggestions- imitation & sympathy in social behaviour.
6. Motivation in social behaviour - motives and drives - selectivity in behaviour, acquired motives.
7. Attitudes - formation - frames of reference stereotypes and measurement of attitudes - change of attitudes.
8. Problems of prostitution, criminal and delinquent behaviour - poverty and slums , unemployment.
9. Case work - case work situation - procedures.

The course is taught by lectures and discussions.

Procedures employed

Text and Collateral readings

1. Individual in society by Crutch and Krutchfield, international students edition.
2. Fields and methods of social work in india by Jacob.

S-10

TITLE

This will be observation & discussion of clinical practice
INTRODUCTION TO SPEECH AND HEARING
DEVELOPMENTAL PSYCHOLOGY

Number

B - 20

Description

The course covers the general details of various aspects of human development from genetic foundations to maturity, with special emphasis on development of speech and language and sensory development.

Objectives

To prepare the student to appreciate problems and issues related to childhood and maturity. This would be of much help later when he works in the clinical set up.

Topical outline

Developmental psychology

1. Problems and methods - pre-scientific and scientific. The longitudinal and cross sectional approaches.
2. Origins of behaviour - genetic foundation - phylogenetic and ontogenetic development of behaviour.
3. Neural development - nerve cells - types - brief description of evolution of the central nervous system - prenatal and postnatal development of CNS - growth of brain - age changes.
4. Glandular development - duct glands - enzymes and behaviour - ductless glands effect of internal secretions on behaviour.
5. Physical development, height, weight growth in head, trunk and limbs, growth in circulatory, respiratory and nervous systems, norms of growth, decline with age.
6. Motor development ; early motor ; development - stages in motor development manipulative behaviour - handedness - development of complex motor skills - motor development during later childhood and adolescence - decline with age.
7. Sensory development - brief history of development of vision and hearing - sensory development in the neonate and early childhood - Age changes - deafness hightone deafness.
8. Growth of intelligence ; evolutionary growth of intelligence. Growth from early childhood to adolescence - retardation and feeble mindedness - decline with age.
9. Emotional development - early beginnings of emotions in infant - development of emotional patterns - teaching of emotional control in childhood - Problems of emotions in adolescence - age changes.
10. Social development ; social responses of infants & of preschool children - scales for measuring social development friendship, leadership, conflicts among children - antisocial tendencies - social life among the aged.

11. Motivation, interest and attitudes. Biogenic and socio-genic motives, change in motivation through ages - development of change of interests and attitudes.

12. Development of speech and language

The brain and the mind - functional organisation in relation to speech and language - definition of speech phylogenetic development - theories of speech development of speech through various stages namely cry, babbling, calling - echolalia and true speech. Theories of learning and the role of learning in development of speech. Various functions of speech - psychology of speech.

Language development : Definition and theories of language development - brain mechanisms of language learning - psychological aspects of language - Biological time table of language learning - vocabulary and grammar reading, writing etc.,

Role of environment and heredity in the development of speech and language.

Procedure employed

Theoretical lectures, discussions - periodical tests.

Tests and collateral readings.

Text. 1. Human development - Zubek and Solberg.

Ref 1. Child development - E. Hurlock
2. Developmental Psychology - E. Hurlock.

TITLE

INTRODUCTORY CLINICAL PSYCHOLOGY AND MENTAL TESTING

Number

B - 21

Description

The course gives a general orientation to the student about the types of clinical problems he has to deal with on the lines of methodology Diagnosis, testing, treatment etc.,

Objectives

1. To train the student to appreciate the types of clinical case material and their study.
2. To train the student in the general appraisal of cases.

Topical outline

Introductory to clinical psychology and mental testing

1. Definition of clinical psychology - Historical introduction methodology in clinical psychology. Case history method - interview - clinical observation - situation tests - questionnaires - objective and projective tests.
2. Concept of normality and abnormality - criteria for abnormality - dynamics of adjustment.
3. Unconscious processes - evidences for postulation of unconscious - structure of mind - id-ego-superego-dreams- types of dreams - dream work suggestion and hypnosis - post hypnotic phenomena.
4. Introduction to classification of mental disorders - broad areas - psychoses - neuroses - organic lesions - brief discussion of symptomatology and diagnosis.
5. Mental subnormality - various forms concept of MA & IQ as related to assessment of intelligence grades of mental subnormality - related disorders of speech and sensory functions - clinical types among mentally subnormal and possible causes scope for improvement through possible methods.
6. A brief discussion on treatment - psychological and physical methods in treatment psychotherapeutic devices - parent counselling and family therapy.
7. Mental testing : its meaning and scope
8. Measurement of intelligence - nature of intelligence and theories - history of intelligence testing - various classification - testing adults and children developmental schedules - Aptitudes and achievement tests - defects in intelligence - testing the mentally subnormal Intellectual impairment and tests.
9. Personality and its measurement - Behaviour studies - self report techniques questionnaire interview - objective and projective methods.

Procedures employed

Theoretical lectures, discussions and demonstrations - periodical tests.

Text and collateral readings.

Text. 1. Fundamental concepts in clinical psychology - Lazarus & Shaffer.

- 80-
- References :
1. Introductory clinical psychology - Garrifield
 2. Mental testing in clinical practice.

TITLE

PSYCHOLOGY OF LEARNING

Number

B - 22

Description

To give an orientation about the basic principles in the learning process.

Objectives

1. To brief the student on the principles in the learning process and their implications in clinical practice.

Topical outline

Some theories of learning - conditioned responses - some conditioning phenomena - instrumental and operant conditioning - acquisition of skills - Problem solving - learning by imitation - economy of different learning procedures - some basic conditions for learning - clinical applications.

Procedure employed

Theoretical lectures, discussions and periodical tests.

Text and collateral readings.

Text.

1. The psychology of learning - Robert Borger & Seaborne.

Reference :

1. The Psychology of learning - J. Deese.

TITLE

STATISTICS

Number

B - 23

Description

To give an orientation to the student about descriptive statistics.

Objective

1. To enable the student to derive statistical inferences from clinical and other data.

Topical outline

Statistics

General nature and scope of statistical methods - collection of data - classification of data into categories and measurements - graphic representations - interpretation - Frequency distribution - measures of central tendency - dispersion

Skewness and kurtosis - rank correlation and product moment correlation elementary sampling methods - random & stratified sampling - Use of tables of random numbers - measures of significance - their need and meaning.

Procedure employed

Theoretical lectures and working out problems - periodical tests.

Text and collateral readings

Text :

1. Statistics - H.E. Garrett.

Ref :

1. Elementary statistical methods Blumrers and lindquist.

TITLE:-

INTRODUCTION TO SPEECH PATHOLOGY:

Number:

S-20 (II B.Sc)

Description:-

Introduction to Speech and disorders of Speech and an over all view of different types of speech disorders and methods of treatment.

Objectives:

1. To develop a knowledge of the different types and causes of speech handicaps.
2. To understand normal speech and language development and to learn what might happen to cause deviation.
3. To establish an understanding of the speech and hearing problems on a child's development.
4. To introduce the students to various methods of therapy.
5. To help understand the role of the speech therapist in therapy with cases.

Topical Outline:

Speech and language - Speech as an overlaid function - Characteristics of normal speech - frequency, intensity, pitch, loudness, articulation, intonation, voice quality, rhythm, vocabulary and level of language, development of speech - speech defects, definition - types of disorders - test methods - rationale for therapy - Methods of therapy - Planning - rapport with case imagination - use of educational principles-

play way - review of progress -
Counselling and guidance - follow-up.

Text & collateral readings:

Van Riper: Principles of speech therapy
Eisenson: Speech disorders
West, Kennedy, Karr: Rehabilitation of Speech

Procedures employed:

1. Lectures
2. Discussions
3. Demonstrations
4. Case findings
5. Special reports - independent readings.

TITLE:

VOICE AND ARTICULATION:-

Number:

S - 21

Description:

Problems of articulation and voice

Objectives:

1. Working knowledge of Speech & Hearing mechanism. The knowledge requisite for the diagnosis of therapeutic planning for articulation and voice problems resulting from structural, informalitory, procedural, economical deficit.
2. Ability and skill for interpreting speech diagnosis information to members of allied professions.

Topical outline:-

Voice and articulation - review of anatomy & physiology of structures taking part in voice and articulation - Laryngoscopy - Characteristics of voice - quality pitch - nasality volume, Resonance - Description of voice qualities. Hoarse, husing, rasping etc. Role of breathing - types of breathing - Disorders of voice - causes - Dysphonia and Aphonia - Disorders of Speech, loudness & quality due to conditions like adductor paralysis, chronic laryngitis, nodule growth in Larynx, congenital anamolies - Laryngeal nerve, throid disturbances, tumours - stenosis of larynx - nasality causes - emotional factors affecting phonation - hysterical aphonia- therapy techniques in the voice disorders.

Articulation - definition, manner of articulation of the sound in English and in Indian Languages - types of errors - articulation testing - picture test - words and sentences test - stimulability test - rationale for therapy - design for therapy - techniques of therapy.

Procedures applied: Lectures, discussions & demonstrations
Collateral Readings :

Text Books: Van Riper & Irwin : Voice & Articulation.

TITLE: DIAGNOSTICS IN SPEECH PATHOLOGY:

Number: S-22

Description: Importance of diagnosis and pathology
technics including case history, medical
examination tests.

Objectives 1. To explore and utilise various techniques of diagnosis and to enable to interest diagnostic information to allied areas.

Topical outline Diagnosis - importance of correct diagnoses - clinical examination of cases with speech and language disorders - history taking, interview of the patient and guardians approach to asking questions, observations and interpretations - tests in speech pathology - articulation tests - perception - tests for aphasics - psychological tests - medical examination - review records reporting and recording of assessments - professional and medico-legal aspects of recording and reporting.

Methods of physical examination of tongue teeth, palate jaw and lips. Correlation-ship of structure Vs. function - Identification of structural defects and tests for them.

Procedure employed Lectures, discussions practical administration of tests, supervised diagnostic work with cases.

Text books Diagnostic approaches in speech Pathology.

Johnson et al

S P E E C H P A T H O L O G Y

TITLE SPEECH DISORDERS ASSOCIATED WITH ORGANIC ANAMOLIES

Number S - 31

Objectives 1. To give a basic understanding of anatomy and physiology of speech mechanism.

2. To give the students nature of the speech disturbances arising out of organic anomalies.
3. To give the students an understanding of the rationales of treatment for speech disorders arising from organic anomalies.
4. To understand the techniques of treating speech problems.

Topical outline

Dyslalias - charting of defective sounds
cleft palate and lip - embryology of face and mouth - Theories on cleft palate and lip - types and classification - surgical repair - prosthesis for cleft palate cases - Associated problems - dentition, respiration - hearing - intelligence faulty habits.

Speech Rehabilitation - Analysis of a typical cleft lip and palate speech in terms of loudness pitch, quality, distinctness or clarity, articulation and intelligibility - Speech therapy techniques - other problems - tongue - tie, open bite and close bite. Narrow palatal vault - temporary deviation as a result of hypertrophic tonsil and adenoids - Malocclusion of teeth - Auditory imperception, hearing loss, Methods of testing and charting the results - Therapy techniques.

Dysarthrias: Central and peripheral - review of Neuro-anatomical correlations with articulation. Signs and symptoms of dysarthria - differentiation between central Vs. peripheral - medical diagnosis as an aid in differential diagnosis - Mental Retardation - speech problems in M.R. - Prognosis.

Procedures employed: Lectures, discussions & supervised clinical work.

Text Books

The Rehabilitation of Speech by West Kennedy and Carr

Collateral Readings.

Speech disorders : Berry & Eisensohn.

TITLE

STUTTERING

Number

S - 32

Description

Etiology, Symptiology & Therapeutics for stammering (stuttering) : Disorders of Rhythms.

Objectives

1. Knowledge for the diagnosis & therapeutic planning for the problems of speech thymem.
2. An understanding of the various theories of stammering.
3. To understand the rationale for developing techniques of therapy.
4. To be able to work with stutterers.

Topical outline

Definition, - theories of stuttering - psychological factors in stuttering - oers onality traits of stuttering - signs and symptoms of stuttering - Analysis of articulatory phonatory and respiratory components - behavioural patterns namely facial postures - grimaceso and movement of body parts - fears of a stutterer- Types of stuttering - primary, secondary - therapeutic techniques - different therapies of stuttering - individual and group therapy Behaviour therapy psychotherapy.

Procedures employed

Lectures, discussions & supervised clinic al work

Collateral readings

Symposium on stuttering : Eisenson

Text Books

Introduction to stuttering - Robinson.

TITLE

APHASIA AND RELATED DISORDERS

Number

S - 33

Description

Disorders in nervous system resulting in language problems.

Objectives

1. To give the students an understanding of the nature of language disturbances resulting from disturbances in the nervous system.
2. To give the students an understanding of rationale of treatment for aphasia and allied disturbances.

Topical outline

Infantileand adult aphasia - definition - terminology in aphasia - differential diagnosis - altism - emotional disorders and agnosia - symptoms - tests in aphasia. Assessment of aphasia, Methods of reporting. Therapy techniques - Prognosis - spontaneous recovery.

Procedures employed

Lectures, Discussions and observations

Text Books

Aphasia in adults - Supplementary assigned readings.

Number - S 34

TITLE
CEREBRAL PALSY

Description

Etiology, symptiology and structural and functional consideration of cerebral palsy. Therapeutic procedures for the speech of the cerebral palsied.

Objectives

1. To give the student the understanding of the cerebral palsy condition and appreciation of its impact upon the development of speech.
2. To prepare the student to material systematic evaluation and design of speech and language training programme with cerebral palsy.

Topical outline

Definitions - types of palsy - causes - physical and mental problems - characteristics of cerebral palsy speech - diagnosis of speech difficulties - phylogenetic principles - methods of speech training motokinesthetic - bobat TIPS - differential development and its implications - need for physiotherapy and activities for daily living.

Procedures employed

Lectures, observations and supervised clinical work.

Text books

Westlay - Rutherford - SPEECH THERAPY AND CEREBRAL PALSY.

TITLEMETHODS FOR EVALUATING HEARING LOSS IN CHILDREN

Number

H - 31

Description and objectives

See A - 2 (M.Sc)

Topical outlines

Problems involved in the testing of infants and young children, use of distraction techniques and play audiometry, principles of psychogalvanometry and electroencephalography, conditioning to audiometry - materials for speech audiometry in children

Procedures & texts.

See A - 2 (M.Sc)

TITLESPEECH READING

Number

H - 32

Description & objective

See A - 9 (M.Sc)

Topical outlines

Speech reading need and possibilities - limitations - visibility of speech movements. Methods of teaching speech reading, Jena, Nitchie, muller, walle and Tadoma natural methods, formal and informal lessons individual and group teaching - practical hints. Use of hearing aids with speech reading with adults. Counselling the family - How the family can help children and adults.

Procedure & text

See A - 9 (M.Sc)

TITLE

ORGANISATION AND ADMINISTRATION OF
SPEECH AND HEARING CENTRES

Number

H - 34

Description

Longitudinal studies of stuttering theories and therapies.

Objectives

1. A working knowledge of the prevalent theories and therapies.
2. An understanding of the rationale of therapeutic approaches and procedures accompanying the various theories of stuttering.
3. An appreciation of the likenesses and differences among the several theories.

Topical outline

1. Speech and hearing centres
2. Incidence of speech and hearing disorders.
3. Staffing pattern - equipment needed
4. Basic utilisation
5. Space utilization
6. Sound treated rooms
7. Clinical facilities to be provided
8. Records and maintenance of records.
9. The role of the speech therapist and the audiologist in the rehabilitation team ethics of the profession.
10. Treatment and training
11. Facilities and professional organisations abroad.
12. Relationship with other medical paramedical and educational agencies.
13. Social organisations and governmental agencies.

Procedure
employed

Lectures : Assignments.

Text and
collateral
readings.

No text for this.
Publications of various organisations
and agencies.

Number

H - 20

Description

Fundamental aspects of hearing; nature testing and rehabilitation.

Objectives

1. To introduce the student to the field of Audiology and the role of Audiologist.
2. To provide background, theory and a fundamental knowledge of the techniques involved in the use of the Audiometer for the detection and evaluation of hearing loss.

Topical outline

Scope of audiology - anatomy and physiology of the ear - physics and psychology of hearing - sound - characteristics of sound measures of sound - frequency - intensity decibel - auditory sensation - pitch and loudness - biological and psychological aspects of hearing - auditory localisation - frequency limits of audible sound - speech range - thresholds of hearing - first audible - discomfort - pain, speech area.

Audiometry - definition, nature and scope diagnosis and treatment of hearing defects - types of tests - sensitivity, recognition of pitch discrimination and tolerance - instructions given to patients - basic tests of hearing conversational voice, whisper, coin click and watch tick tuning fork

tests - schwabach, Rinne and Weber - pure-tone audiometry - absolute and normal thresholds - routine audiometry - air conduction Bone conduction - precautions and care in audiometry - parameters affecting thresholds - continuous Vs pulse tone, repetition rate, ascending Vs descending intensity - other factors - total time taken for audiometry, patients attention, ambient noise and positioning of the earphones.

Procedure employed Lectures, Discussions, Demonstrations and practical work with cases.

Texts and references-Davis H., and Silverman S.R. : Hearing and deafness, Holt, Rinehart, and Winston, Inc. (1960) New York.

Newby H. Audiology Appleton - Century Crofts(1964) New York.

O'Neill, J.J. & Oyer H.J. : Applied Audiometry, Dodd, Mead & Co, Inc, (1966) New York

Articles suggested from time to time.

TITLE

SPECIAL TEST IN AUDIOLOGY

Number

H - 21

Description

Fundamental aspect of hearing, nature testing and rehabilitation.

Objectives

1. To introduce the student to the field of audiology and the role of audiologist
2. To provide background, therapy and fundamental knowledge of the techniques involved in the use of the audiometry for the detection and evaluation of hearing loss.

Topical outlines

Auditory fatigue - masking - types of masking - clinical use of masking in audiometry. Speech tests - principles, materials to be used, techniques. Recruitment monaural and binaural loudness balance tests, significance of tests, short increment sensitivity index, tone decay, bekesy audiometry. Tests for functional deafness.

Procedures employed

Lectures; discussion; demonstration

TITLE

SPECIAL EDUCATION AND REHABILITATION
OF THE AURALLY HANDICAPPED

Number

H - 22

Description

Principles and methods of assessing and diagnosing the hearing loss; goals of habilitation and rehabilitation, theory and methodology in therapy for the aural handicapped.

Objectives

1. To familiarize the student with the problems of hearing loss, causes of hearing loss. Assessment, Diagnosis and treatments of hearing loss.
2. To acquaint the student with the principles and application of modern methods and techniques in therapy.
3. To acquaint the student with the principles of and necessity for amplification for the hearing impaired through hearing aids, auditory training unit. Proper selection and a balanced use of the different aids commercially available.
4. A working knowledge of the educational psychological and social aspects of hearing loss.

Topical outline

History of the deaf - hearing problems - degree of loss - causes - goals in rehabilitation. Medical and surgical possibilities - hearing therapy - hearing aids - speech reading - methods - language - parent counselling - Importance of early diagnosis - parent lessons - psychology of the deaf and the hard of hearing.

Procedures employed

Lecture : Discussions : Demonstrations.

Text and collateral readings.

- | | |
|------------------------|---|
| 1. Davis and silverman | deafness .. Hearing and/ |
| 2. Newby | .. Audiology |
| 3. Hirsh | .. Measurement of hearing. |
| 4. Ewing | .. Teaching deaf children to talk. |
| 5. Ewing | .. New opportunities for deaf children. |
| 6. Ewing | .. Educational guidance and the deaf. |
| 7. Groht | .. Natural language. |
| 8. Decarle | .. The deaf. |
| 9. Oyer HJ | .. Auditory communication. |
| 10. Myclebust H | .. Auditory disorders in children. |

TITLE

HEARING AIDS AND AUDITORY TRAINING

Number

H - 23

Description

Reblitiation : Principles and methods of amplification ; Knowledge of different types and degrees of loss and their adjustment to amplification. Detailed information about the use and performances of different types of hearing aids. Use of residual hearing by training through auditory experiences.

Objectives

1. To familiarize the student with different types of hearing aids available.
2. Selection of hearing aid.
3. Auditory training.
4. Hearing aid trial
5. Balance and use of different hearing aid.

Topical outline

Hearing loss ; hearing aids ; basic elements of an hearing aid, hearing aid selection ; ear mound making ; uses of hearing aid individual-group- Elementary repair of hearing aids - principles of auditory training - development of a cheap hearing aid with indigenous equipment.

Procedures employed.

Lectures : Discussions : Demonstrations.

- oOo -

MURTHY /